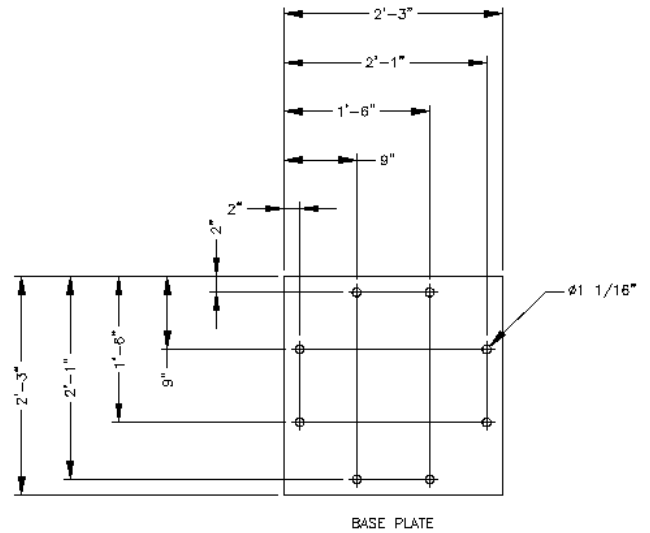
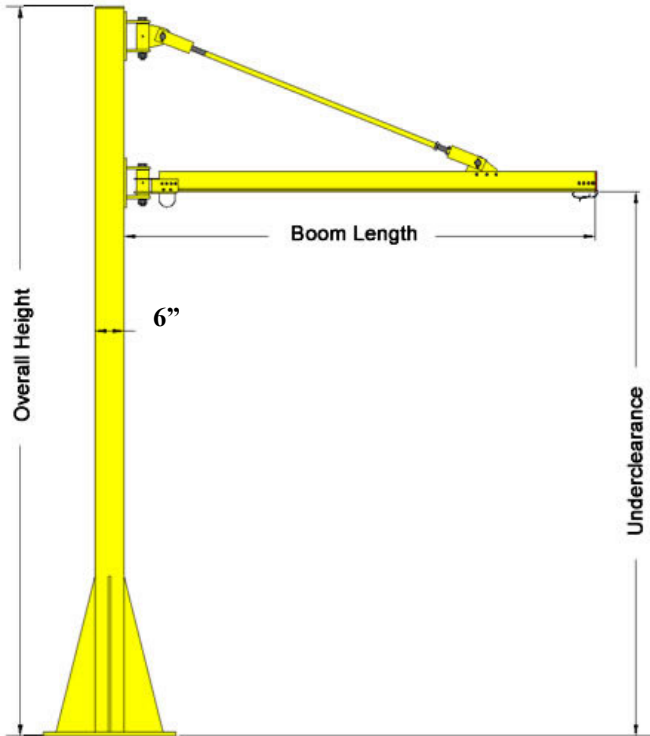




# ETA-4 Jib Cranes



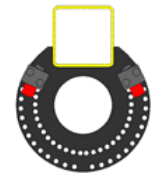
**Test Load:** Shall not be more than 125% of the Rated Load unless recommended by the manufacturer. Column shall not be loaded beyond it's rated load capacity except for test purposes.

**Notes:**

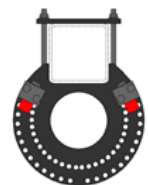
1. Consult Factory for underclearances more than 12'-0"
2. The minimum anchor requirement is a 3/4" wedge type anchor bolt with 3 1/4" standard embedment in 6" 3000 PSI concrete.
3. Rated Load is based on 1/450 Deflection.

Part #	Boom Length	Underclearance	Overall Height	Rated Load
98760	6'-0"	10'-0"	12'-8"	500 LBS.
98761	6'-0"	12'-0"	14'-8"	500 LBS.
98762	7'-0"	10'-0"	12'-8"	500 LBS.
98763	7'-0"	12'-0"	14'-8"	500 LBS.
98764	8'-0"	10'-0"	12'-8"	450 LBS.
98765	8'-0"	12'-0"	14'-8"	450 LBS.
98766	9'-0"	10'-0"	13'-2"	400 LBS.
98767	9'-0"	12'-0"	15'-2"	400 LBS.
98768	10'-0"	10'-0"	13'-2"	350 LBS.
98769	10'-0"	12'-0"	15'-2"	350 LBS.
98770	11'-0"	10'-0"	13'-2"	325 LBS.
98771	11'-0"	12'-0"	15'-2"	325 LBS.
98772	12'-0"	10'-0"	13'-8"	300 LBS.
98773	12'-0"	12'-0"	15'-8"	300 LBS.
98774	13'-0"	10'-0"	13'-8"	300 LBS.
98775	13'-0"	12'-0"	15'-8"	300 LBS.
98776	14'-0"	10'-0"	13'-8"	275 LBS.
98777	14'-0"	12'-0"	15'-8"	275 LBS.
98778	15'-0"	10'-0"	14'-2"	250 LBS.
98779	15'-0"	12'-0"	16'-2"	250 LBS.
98780	16'-0"	10'-0"	14'-2"	200 LBS.
98781	16'-0"	12'-0"	16'-2"	200 LBS.
98782	17'-0"	10'-0"	14'-2"	175 LBS.
98783	17'-0"	12'-0"	16'-2"	175 LBS.
98784	18'-0"	10'-0"	14'-8"	150 LBS.
98785	18'-0"	12'-0"	16'-8"	150 LBS.
98786	19'-0"	10'-0"	14'-8"	150 LBS.
98787	19'-0"	12'-0"	16'-8"	150 LBS.
98788	20'-0"	10'-0"	14'-8"	125 LBS.
98789	20'-0"	12'-0"	16'-8"	125 LBS.

ETA-4 Jib & Column

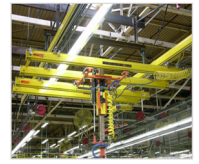


Welded Index Stop

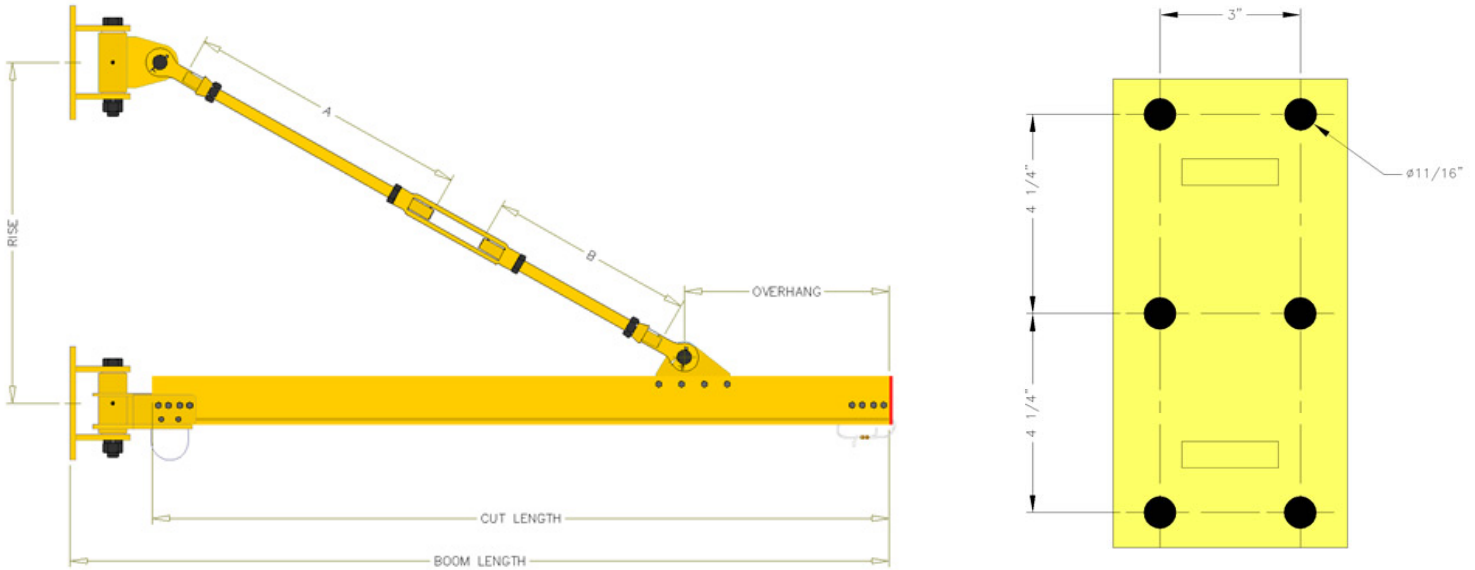


Bolt-on Index Stop

Part #	Description
98535	6" Jib Column Welded Index Stop Assembly for ETA-4
98536	6" Jib Column Bolted Index Stop Assembly for ETA-4



## ETA-4 Wall-Mounted Jib Cranes



	Part #	Boom Length	Cut Length	Rise	Overhang	DIM A	DIM B	Rated Load
<b>ETA - 4 Wall Mounted Jibs</b>	98806	6'-0"	5'-4 1/4"	2'-0"	2'-0"	1'-10 1/4"	1'-6"	500 LBS.
	98807	7'-0"	6'-4 1/4"	2'-0"	2'-0"	2'-9 1/2"	1'-6"	500 LBS.
	98808	8'-0"	7'-4 1/4"	2'-0"	2'-0"	3'-9"	1'-6"	450 LBS.
	98809	9'-0"	8'-4 1/4"	2'-6"	1'-6"	4'-10"	1'-6"	400 LBS.
	98810	10'-0"	9'-4 1/4"	2'-6"	1'-6"	5'-9 3/4"	1'-6"	350 LBS.
	98811	11'-0"	10'-4 1/4"	2'-6"	1'-6"	6'-9 1/4"	1'-6"	325 LBS.
	98812	12'-0"	11'-4 1/4"	3'-0"	1'-6"	7'-10 1/4"	1'-6"	300 LBS.
	98813	13'-0"	12'-4 1/4"	3'-0"	1'-6"	8'-10"	1'-6"	300 LBS.
	98814	14'-0"	13'-4 1/4"	3'-0"	1'-6"	9'-9 3/4"	1'-6"	275 LBS.
	98815	15'-0"	14'-4 1/4"	3'-6"	1'-6"	10'-10 3/4"	1'-6"	250 LBS.
	98816	16'-0"	15'-4 1/4"	3'-6"	1'-6"	11'-10 3/8"	1'-6"	200 LBS.
	98817	17'-0"	16'-4 1/4"	3'-6"	1'-6"	11'-4"	3'-0"	175 LBS.
	98818	18'-0"	17'-4 1/4"	4'-0"	1'-6"	10'-11 1/4"	4'-6"	150 LBS.
98819	19'-0"	18'-4 1/4"	4'-0"	1'-6"	11'-11"	4'-6"	150 LBS.	
98820	20'-0"	19'-4 1/4"	4'-0"	1'-6"	11'-4 3/4"	6'-0"	125 LBS.	



**Contact Information:**

1033 Sutton St. Howell, MI 48843

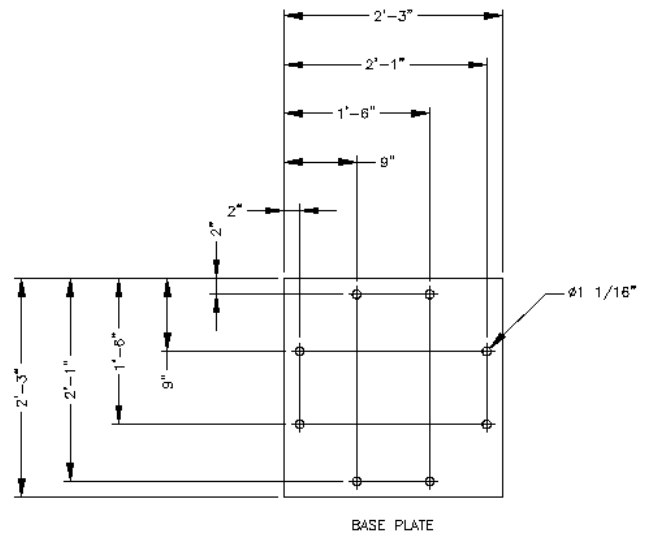
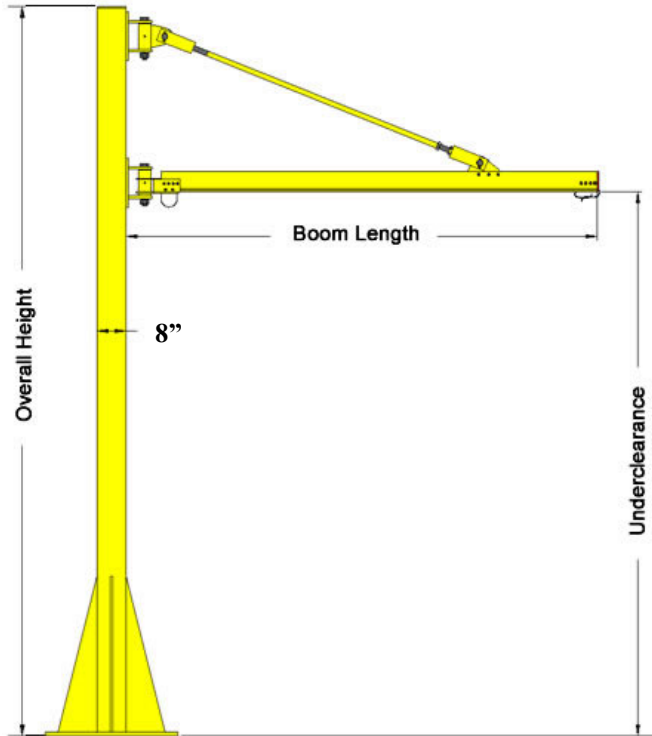
Phone: 517-546-3220

Fax: 517-546-0696

Web: [www.unified-ind.com](http://www.unified-ind.com)



# ETA-5 Jib Cranes



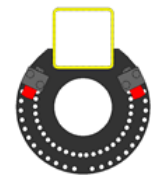
**Test Load:** Shall not be more than 125% of the Rated Load unless recommended by the manufacturer. Column shall not be loaded beyond its rated load capacity except for test purposes.

**Notes:**

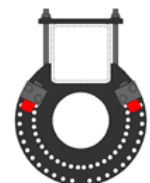
1. Consult Factory for underclearances more than 12'-0"
2. The minimum anchor requirement is a 3/4" wedge type anchor bolt with 3 1/4" standard embedment in 6" 3000 PSI concrete.
3. Rated Load is based on 1/450 Deflection.

Part #	Boom Length	Underclearance	Overall Height	Rated Load
98660	6'-0"	10'-0"	12'-8"	500 LBS.
98661	6'-0"	12'-0"	14'-8"	500 LBS.
98662	7'-0"	10'-0"	12'-8"	500 LBS.
98663	7'-0"	12'-0"	14'-8"	500 LBS.
98664	8'-0"	10'-0"	12'-8"	500 LBS.
98665	8'-0"	12'-0"	14'-8"	500 LBS.
98666	9'-0"	10'-0"	13'-2"	500 LBS.
98667	9'-0"	12'-0"	15'-2"	500 LBS.
98668	10'-0"	10'-0"	13'-2"	500 LBS.
98669	10'-0"	12'-0"	15'-2"	500 LBS.
98670	11'-0"	10'-0"	13'-2"	500 LBS.
98671	11'-0"	12'-0"	15'-2"	500 LBS.
98672	12'-0"	10'-0"	13'-8"	500 LBS.
98673	12'-0"	12'-0"	15'-8"	500 LBS.
98674	13'-0"	10'-0"	13'-8"	475 LBS.
98675	13'-0"	12'-0"	15'-8"	475 LBS.
98676	14'-0"	10'-0"	13'-8"	425 LBS.
98677	14'-0"	12'-0"	15'-8"	425 LBS.
98678	15'-0"	10'-0"	14'-2"	375 LBS.
98679	15'-0"	12'-0"	16'-2"	375 LBS.
98680	16'-0"	10'-0"	14'-2"	325 LBS.
98681	16'-0"	12'-0"	16'-2"	325 LBS.
98682	17'-0"	10'-0"	14'-2"	275 LBS.
98683	17'-0"	12'-0"	16'-2"	275 LBS.
98684	18'-0"	10'-0"	14'-8"	250 LBS.
98685	18'-0"	12'-0"	16'-8"	250 LBS.
98686	19'-0"	10'-0"	14'-8"	225 LBS.
98687	19'-0"	12'-0"	16'-8"	225 LBS.
98688	20'-0"	10'-0"	14'-8"	200 LBS.
98689	20'-0"	12'-0"	16'-8"	200 LBS.

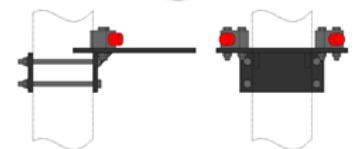
ETA-5 Jib & Column



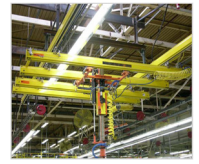
Welded Index Stop



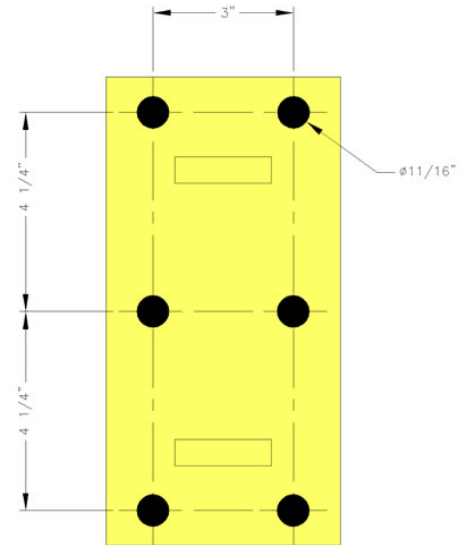
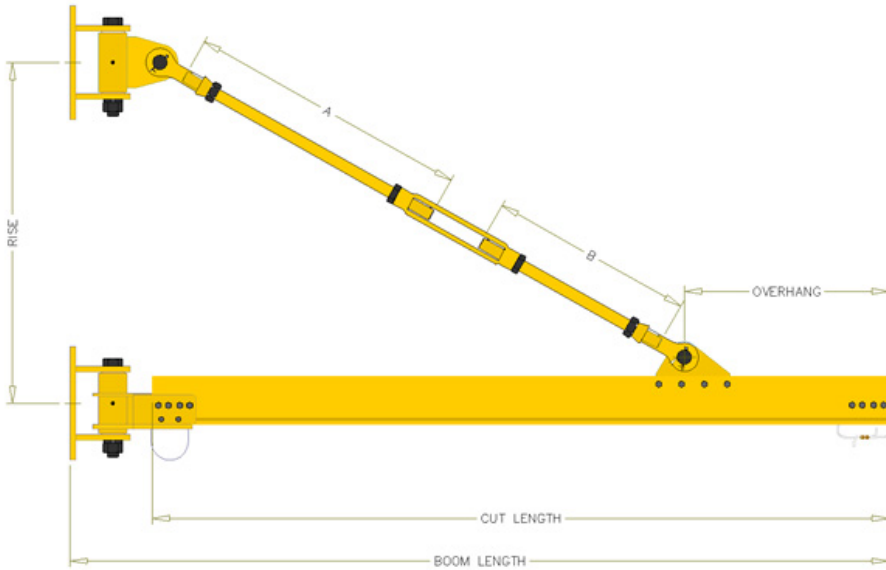
Bolt-on Index Stop



Part #	Description
98540	8" Jib Column Welded Index Stop Assembly for ETA-5
98541	8" Jib Column Bolted Index Stop Assembly for ETA-5



## ETA-5 Wall-Mounted Jib Cranes



	Part #	Boom Length	Cut Length	Rise	Overhang	DIM A	DIM B	Rated Load
<b>ETA - 5 Wall Mounted Jibs</b>	98606	6'-0"	5'-4 3/4"	2'-0"	2'-0"	1'-4 3/8"	1'-6"	500 LBS.
	98607	7'-0"	6'-4 3/4"	2'-0"	2'-0"	2'-3 3/8"	1'-6"	500 LBS.
	98608	8'-0"	7'-4 3/4"	2'-0"	2'-0"	3'-1 7/8"	1'-6"	500 LBS.
	98609	9'-0"	8'-4 3/4"	2'-6"	1'-6"	4'-10"	1'-6"	500 LBS.
	98610	10'-0"	9'-4 3/4"	2'-6"	1'-6"	5'-9 3/4"	1'-6"	500 LBS.
	98611	11'-0"	10'-4 3/4"	2'-6"	1'-6"	6'-9 1/4"	1'-6"	500 LBS.
	98612	12'-0"	11'-4 3/4"	3'-0"	1'-6"	7'-10 1/4"	1'-6"	500 LBS.
	98613	13'-0"	12'-4 3/4"	3'-0"	1'-6"	8'-10"	1'-6"	475 LBS.
	98614	14'-0"	13'-4 3/4"	3'-0"	1'-6"	9'-9 3/4"	1'-6"	425 LBS.
	98615	15'-0"	14'-4 3/4"	3'-6"	1'-6"	10'-10 3/4"	1'-6"	375 LBS.
	98616	16'-0"	15'-4 3/4"	3'-6"	1'-6"	11'-10 3/8"	1'-6"	325 LBS.
	98617	17'-0"	16'-4 3/4"	3'-6"	1'-6"	11'-4"	3'-0"	275 LBS.
	98618	18'-0"	17'-4 3/4"	4'-0"	1'-6"	10'-11 1/4"	4'-6"	250 LBS.
	98619	19'-0"	18'-4 3/4"	4'-0"	1'-6"	11'-11"	4'-6"	225 LBS.
98620	20'-0"	19'-4 3/4"	4'-0"	1'-6"	11'-4 3/4"	6'-0"	200 LBS.	



**Contact Information:**

1033 Sutton St. Howell, MI 48843

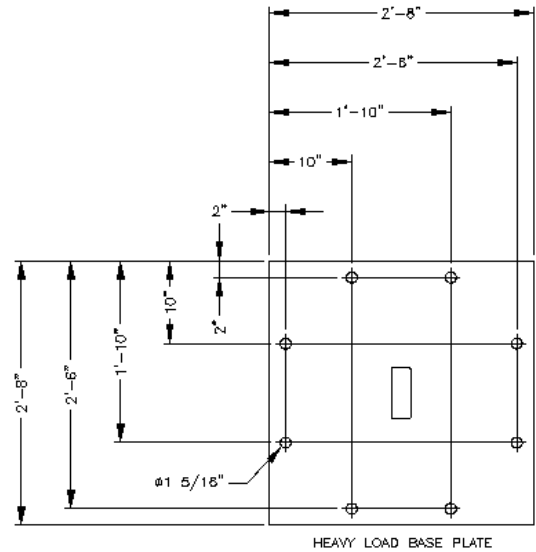
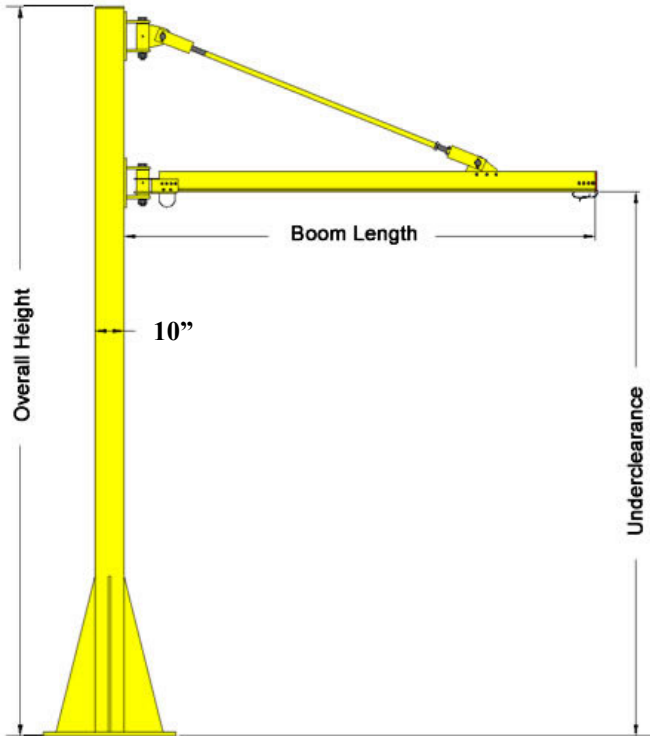
Phone: 517-546-3220

Fax: 517-546-0696

Web: [www.unified-ind.com](http://www.unified-ind.com)



# ETA-8 Jib Cranes



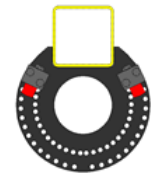
**Test Load:** Shall not be more than 125% of the Rated Load unless recommended by the manufacturer. Column shall not be loaded beyond its rated load capacity except for test purposes.

**Notes:**

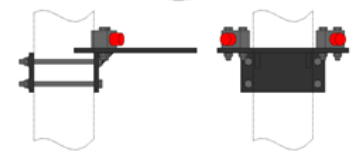
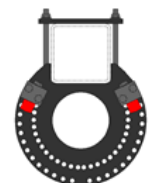
1. Consult Factory for underclearances more than 12'-0
2. The minimum anchor requirement is a 1" wedge type anchor bolt with 3 1/4" standard embedment in 9" 3000 PSI concrete.
3. Rated Load is based on 1/450 Deflection.

Part #	Boom Length	Underclearance	Overall Height	Rated Load
98561	6'-0"	10'-0"	12'-8"	2000 LBS.
98562	6'-0"	12'-0"	14'-8"	2000 LBS.
98563	7'-0"	10'-0"	12'-8"	2000 LBS.
98564	7'-0"	12'-0"	14'-8"	2000 LBS.
98566	8'-0"	10'-0"	12'-8"	1825 LBS.
98567	8'-0"	12'-0"	14'-8"	1825 LBS.
98568	9'-0"	10'-0"	13'-2"	1700 LBS.
98569	9'-0"	12'-0"	15'-2"	1700 LBS.
98570	10'-0"	10'-0"	13'-2"	1500 LBS.
98571	10'-0"	12'-0"	15'-2"	1500 LBS.
98572	11'-0"	10'-0"	14'-0"	1350 LBS.
98573	11'-0"	12'-0"	16'-0"	1350 LBS.
98574	12'-0"	10'-0"	14'-0"	1225 LBS.
98575	12'-0"	12'-0"	16'-0"	1225 LBS.
98576	13'-0"	10'-0"	14'-8"	1125 LBS.
98577	13'-0"	12'-0"	16'-8"	1125 LBS.
98578	14'-0"	10'-0"	14'-8"	1050 LBS.
98579	14'-0"	12'-0"	16'-8"	1050 LBS.
98580	15'-0"	10'-0"	15'-4"	975 LBS.
98581	15'-0"	12'-0"	17'-4"	975 LBS.
98582	16'-0"	10'-0"	15'-4"	925 LBS.
98583	16'-0"	12'-0"	17'-4"	925 LBS.
98584	17'-0"	10'-0"	16'-0"	875 LBS.
98585	17'-0"	12'-0"	18'-0"	875 LBS.
98586	18'-0"	10'-0"	16'-0"	850 LBS.
98587	18'-0"	12'-0"	18'-0"	850 LBS.
98588	19'-0"	10'-0"	16'-8"	800 LBS.
98589	19'-0"	12'-0"	18'-8"	800 LBS.
98590	20'-0"	10'-0"	16'-8"	775 LBS.
98591	20'-0"	12'-0"	18'-8"	775 LBS.

ETA-8 Jib & Column

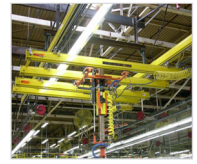


Welded Index Stop

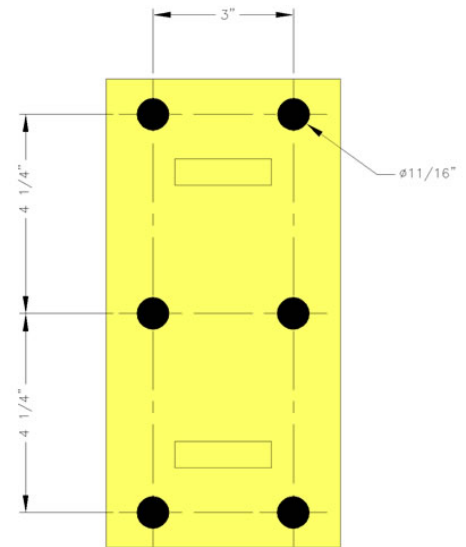
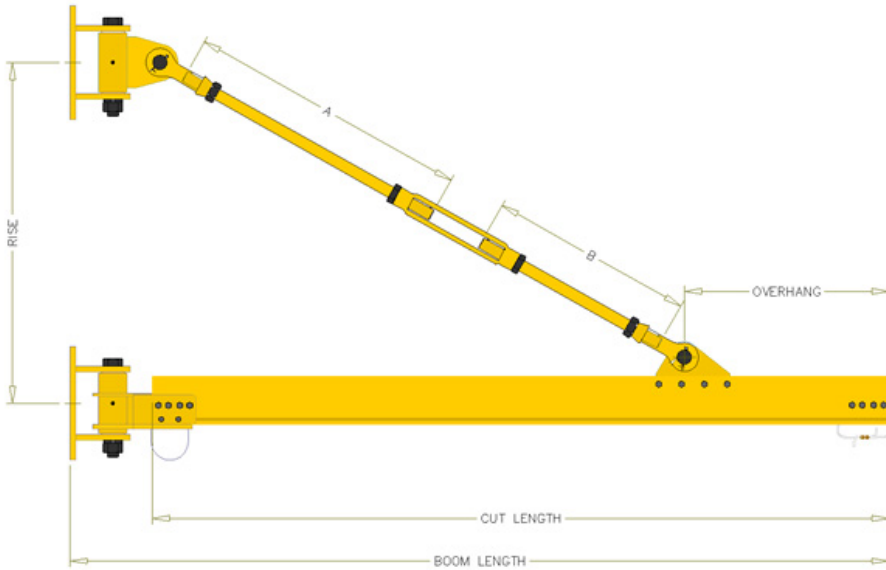


Bolt-on Index Stop

Part #	Description
98545	10" Jib Column Welded Index Stop Assembly for ETA-8
98546	10" Jib Column Bolted Index Stop Assembly for ETA-8



## ETA-8 Wall-Mounted Jib Cranes



Part #	Boom Length	Cut Length	Rise	Overhang	DIM A	DIM B	Rated Load
98490	6'-0"	5'-4 1/4"	2'-0"	2'-0"	1'-3 1/4"	1'-6"	2000 LBS.
98495	7'-0"	6'-4 1/4"	2'-0"	2'-0"	2'-2 1/2"	1'-6"	2000 LBS.
98500	8'-0"	7'-4 1/4"	2'-0"	2'-6"	2'-6 1/4"	1'-6"	1825 LBS.
98503	9'-0"	8'-4 1/4"	2'-6"	2'-6"	3'-9 1/2"	1'-6"	1700 LBS.
98505	10'-0"	9'-4 1/4"	2'-6"	2'-6"	4'-9"	1'-6"	1500 LBS.
98508	11'-0"	10'-4 1/4"	3'-4"	2'-6"	5'-11 3/8"	1'-6"	1350 LBS.
98510	12'-0"	11'-4 1/4"	3'-4"	2'-6"	6'-10 7/8"	1'-6"	1225 LBS.
98513	13'-0"	12'-4 1/4"	4'-0"	2'-6"	8'-0 3/4"	1'-6"	1125 LBS.
98515	14'-0"	13'-4 1/4"	4'-0"	2'-6"	9'-0"	1'-6"	1050 LBS.
98518	15'-0"	14'-4 1/4"	4'-8"	2'-6"	10'-2"	1'-6"	975 LBS.
98520	16'-0"	15'-4 1/4"	4'-8"	2'-6"	11'-1 3/8"	1'-6"	925 LBS.
98523	17'-0"	16'-4 1/4"	5'-4"	2'-6"	10'-9 3/8"	3'-0"	875 LBS.
98525	18'-0"	17'-4 1/4"	5'-4"	2'-6"	11'-8 3/4"	3'-0"	850 LBS.
98528	19'-0"	18'-4 1/4"	6'-0"	2'-6"	11'-4 5/8"	4'-6"	800 LBS.
98530	20'-0"	19'-4 1/4"	6'-0"	2'-6"	10'-10"	6'-0"	775 LBS.

ETA - 8 Wall Mounted Jibs



**Contact Information:**

1033 Sutton St. Howell, MI 48843

Phone: 517-546-3220

Fax: 517-546-0696

Web: [www.unified-ind.com](http://www.unified-ind.com)