



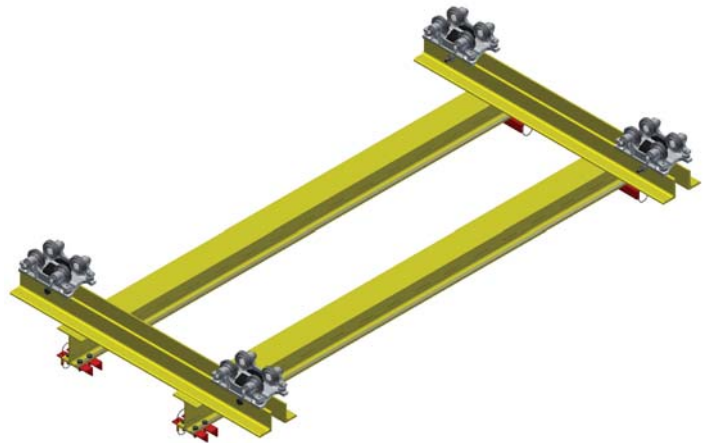
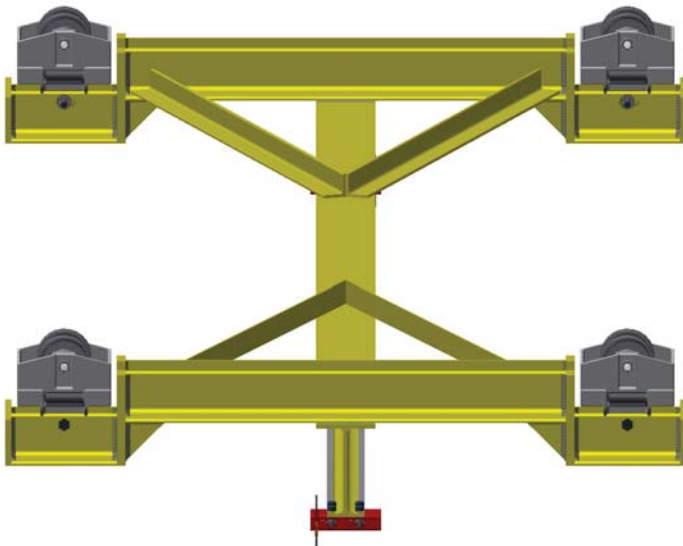
UNIFIED INDUSTRIES, INC.

Howell, Michigan

Phone: 517-546-3220

Email: sales@unified-ind.com

MANUAL BRIDGE CRANES



Custom bridge cranes for special applications...to your specifications

Low headroom bridge crane

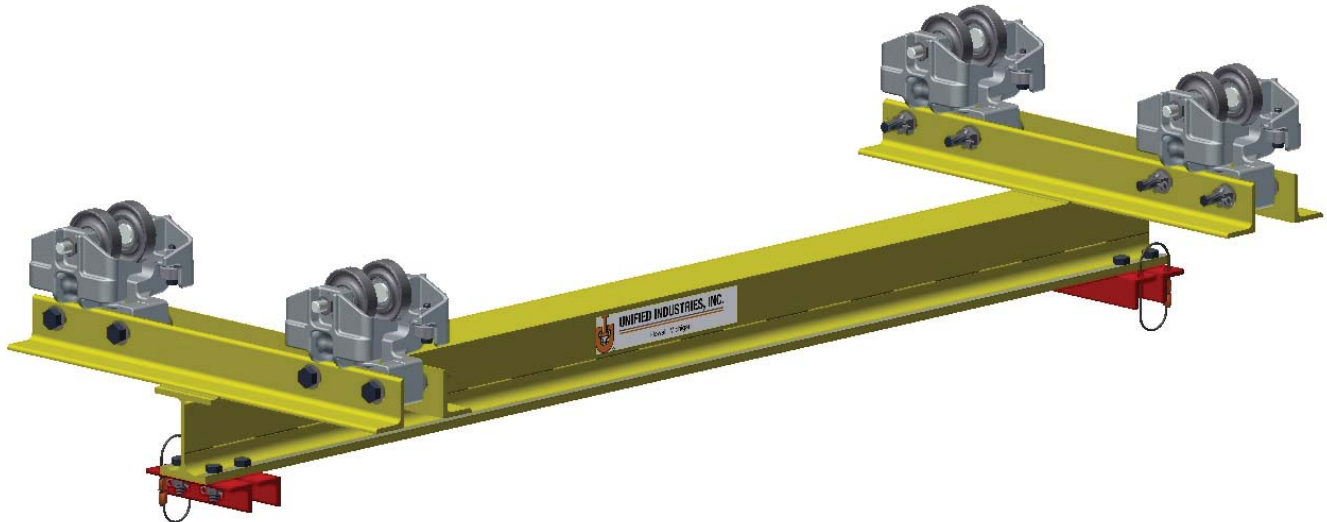
- For extremely low headroom conditions
- Bridge beam operates with a better under clearance

Dual beam bridge crane for suspension of large fixtures that move parallel to an assembly line for a balanced suspended load condition.



	PAGE
Custom Bridge Cranes	1-2
Light load Bridge Cranes up to 1000 lb. Rated Load, Spans up to 10 foot.....	3-4
Medium Load Bridge Cranes.....	5-6
Overhanging Bridge Cranes	7-8
Heavy Load Bridge Cranes.....	9-10
Telescoping Unit Light, Medium Duty Extended Rated Loads, From 100 to 360 lbs..	11-12
Telescoping Unit Standard Duty Extended Rated Loads, From 500 to 2000 lbs.....	13-14
Heavy Duty Telescoping Unit Extended Rated Loads From 2000 to 5325 lbs.....	15-16
Custom Combination Unit.....	17-18

***All dimensions are reference only
and need to be verified with factory.**



Application

Unified light load bridge cranes are designed for the suspension of portable spotwelding guns, power tools, balancers, hoists, fixtures etc., and other light loads not exceeding 1000 pounds.

Specifications

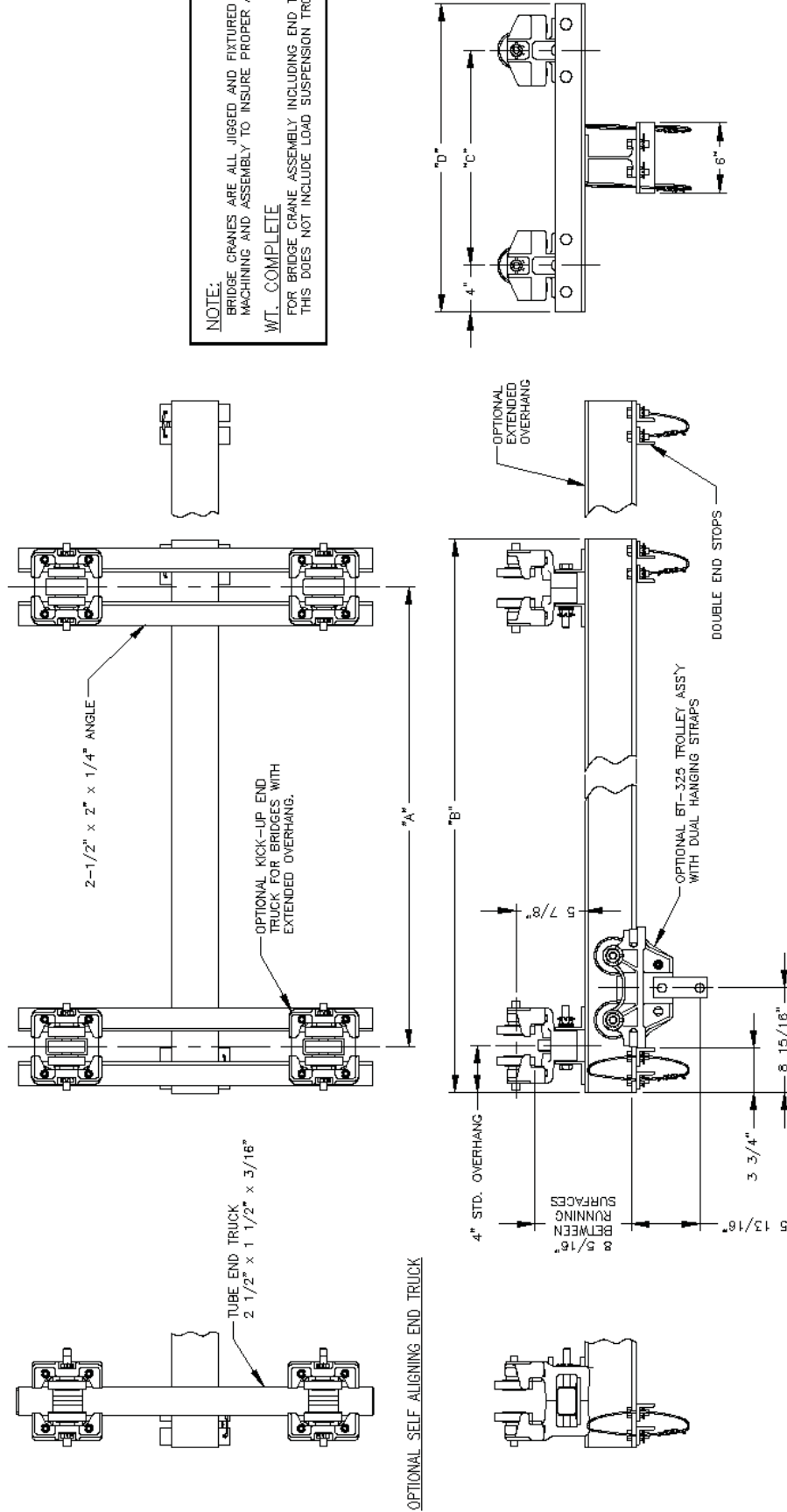
Unified light load bridge cranes consist of two end truck assemblies, mounted with either MBC-500, SAC-500 or AC-500 trolleys, supporting a bridge beam. The bridge beam is a compound section with a hardened and ground flat track 3.25" in width. (See trolley section for trolley specifications).

End trucks are mounted with trolleys for operation on either flat rail or S-Beam. End stops bolted to each end of the bridge complete the assembly.

Options

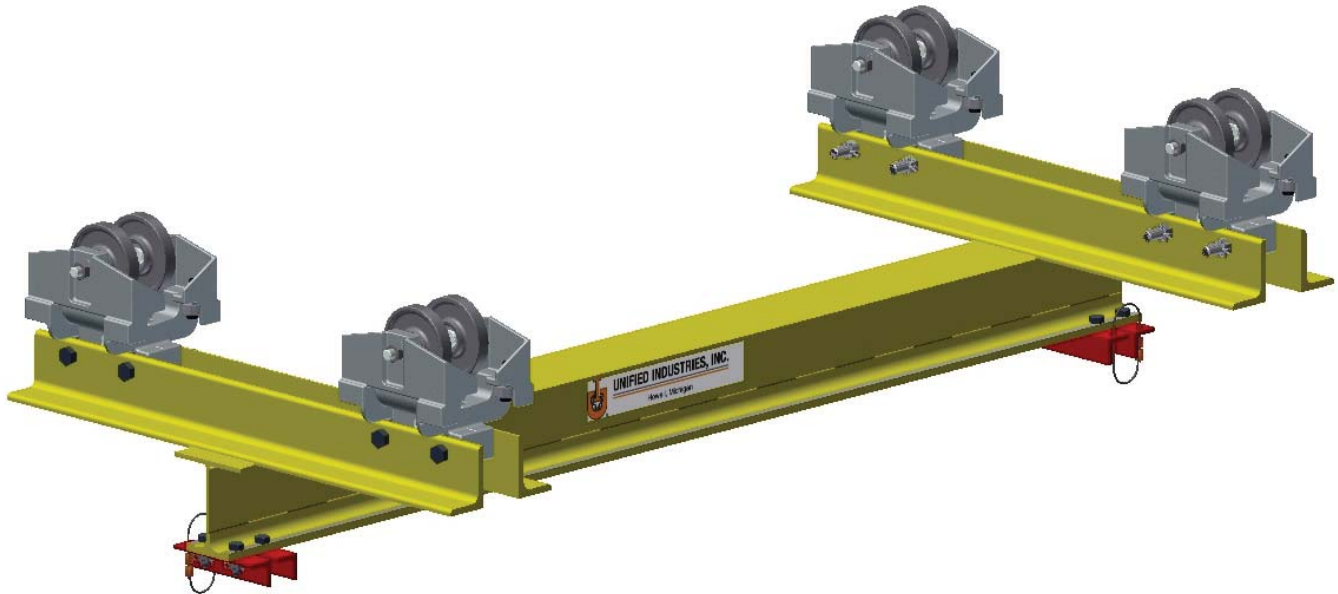
- Bridge beam overhang to your specifications
- Counter thrust wheels or trolleys are available to prevent "kick-up" action when suspended load must be extended beyond bridge span
- Standard redundant end stops

NOTE:
BRIDGE CRANES ARE ALL JIGGED AND FIXTURED IN MACHINING AND ASSEMBLY TO INSURE PROPER ALIGNMENT.
WT. COMPLETE
FOR BRIDGE CRANE ASSEMBLY INCLUDING END TRUCK TROLLEYS. THIS DOES NOT INCLUDE LOAD SUSPENSION TROLLEY.



BRIDGE SPAN A	OVERALL B	WHEEL BASE C	OVERALL D	RATED LOAD	MBC-500		MBC-500			
					MBC-500	MBC-500 W/KU	MBC-500	MBC-500		
2'-0"	608 mm	2'-0"	558 mm	1000 LBS	90 LBS	40.3 KGS	96 LBS	43 KGS	90 LBS	40.3 KGS
3'-0"	814 mm	3'-0"	556 mm	1000 LBS	96 LBS	43 KGS	102 LBS	45.7 KGS	96 LBS	43 KGS
4'-0"	1218 mm	4'-0"	560 mm	1000 LBS	108 LBS	48.4 KGS	114 LBS	51.1 KGS	107 LBS	47.9 KGS
5'-0"	1524 mm	5'-0"	660 mm	1000 LBS	121 LBS	54.2 KGS	127 LBS	56.9 KGS	127 LBS	56.9 KGS
6'-0"	1828 mm	6'-0"	812 mm	1000 LBS	134 LBS	60.0 KGS	138 LBS	62.3 KGS	133 LBS	59.6 KGS
7'-0"	2133 mm	7'-0"	985 mm	1000 LBS	146 LBS	65.4 KGS	152 LBS	68.1 KGS	146 LBS	65 KGS
8'-0"	2438 mm	8'-0"	985 mm	1000 LBS	159 LBS	71.2 KGS	165 LBS	73.9 KGS	158 LBS	70.8 KGS
9'-0"	2743 mm	9'-0"	1066 mm	750 LBS	172 LBS	77.1 KGS	178 LBS	79.7 KGS	171 LBS	76.8 KGS
10'-0"	3048 mm	10'-0"	1066 mm	500 LBS	186 LBS	82.9 KGS	190 LBS	86.1 KGS	183 LBS	82 KGS

The above table is based on 1/550 deflection ratio.



Application

Unified medium load bridge cranes are designed for the suspension of portable spotwelding guns, power tools, balancers, hoists, fixtures etc., and other medium loads not exceeding 3000 pounds.

Specifications

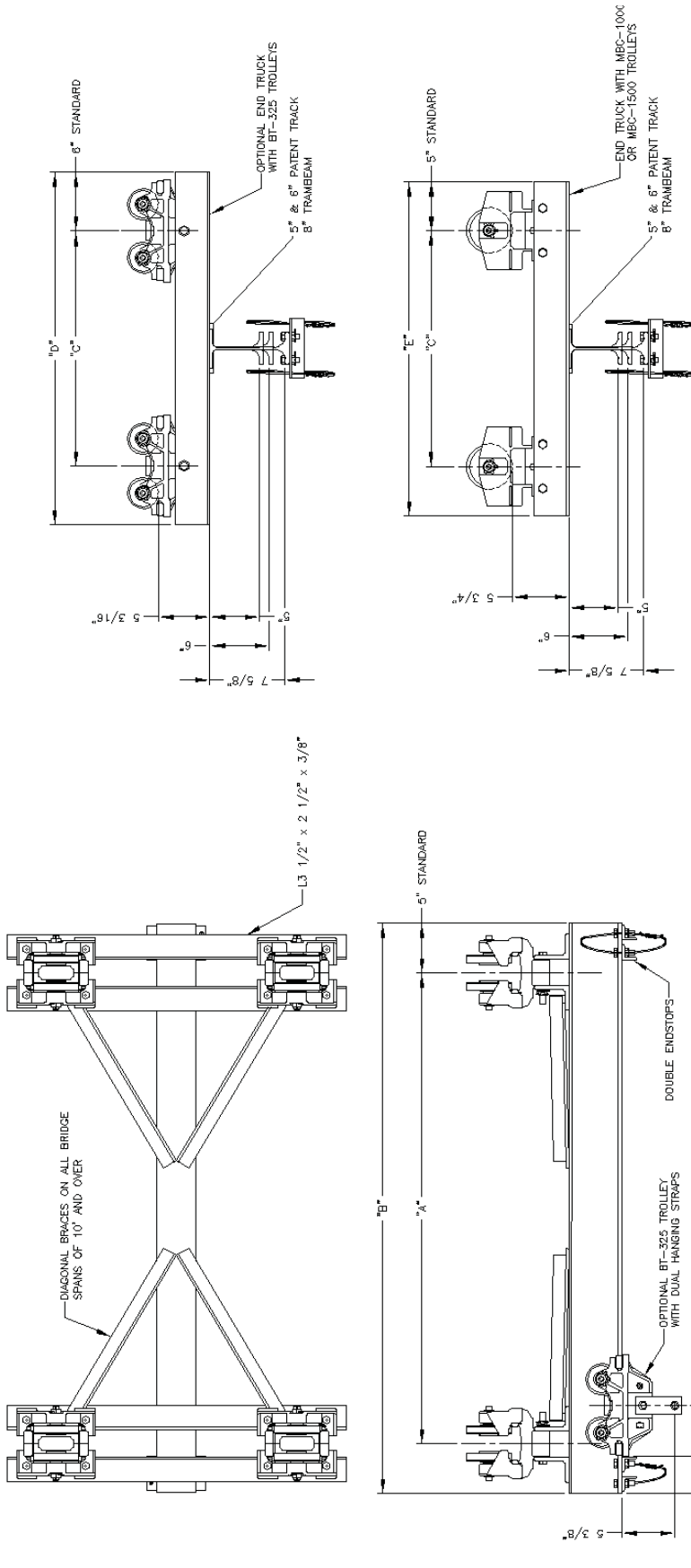
Unified medium load bridge cranes consist of two end truck assemblies, mounted with either BT-325 or MBC-1000 trolleys, supporting a bridge beam. The bridge beam is a compound section with a hardened and ground flat track 3.25" in width. (See trolley section for trolley specifications).

End trucks are mounted with trolleys for operation on either flat rail or S-Beam. End stops bolted to each end of the bridge complete the assembly.

Spans of 10 feet or more have diagonal bracing from bridge beam to end trucks.

Options

- Bridge beam overhang to your specifications
- Counter thrust wheels or trolleys are available to prevent "kick-up" action when suspended load must be extended beyond bridge span
- Bridge crane spans 10 feet to 15 feet will be furnished with 6" compound section bridge beam flat flange 3.25" in width
- Bridge crane spans 16 feet to 20 feet will be furnished with 8" Trambeam bridge beam flat flange 3.25" in width
- Standard redundant end stops



⊗ WT.
FOR BRIDGE CRANE ASSEMBLY INCLUDING END TRUCK TROLLEYS THIS DOES NOT INCLUDE LOAD SUSPENSION TROLLEY.

NOTES:
(1) BRIDGE BEAMS OVER 12 FT. (3657.6 mm) SPANS WILL BE FURNISHED WITH 1/2\"/>

BRIDGE	BT-325 END TRUCK (STANDARD)		MBC-1000 OR MBC-1500 END TRUCKS (OPTIONAL)		RATED LOAD	⊗ WT. COMPLETE
	SPAN "A"	OVERALL "B"	WHEEL BASE "C"	OVERALL "D"		
5' BRIDGE BEAM	3'-0"	3'-10"	1'-6"	2'-6"	3000	143
	4'-0"	4'-10"	2'-0"	3'-0"	3000	156
	5'-0"	5'-10"	2'-6"	3'-6"	3000	174
	6'-0"	6'-10"	3'-0"	4'-0"	3000	180
	7'-0"	7'-10"	3'-6"	4'-6"	3000	205
	8'-0"	8'-10"	4'-0"	5'-0"	3000	215
	9'-0"	9'-10"	4'-6"	5'-6"	3000	225
	10'-0"	10'-10"	5'-0"	6'-0"	3000	246
	11'-0"	11'-10"	5'-6"	6'-6"	3000	266
	12'-0"	12'-10"	6'-0"	7'-0"	3000	276
	13'-0"	13'-10"	6'-6"	7'-6"	2650	291
	14'-0"	14'-10"	7'-0"	8'-0"	2250	307
	15'-0"	15'-10"	7'-6"	8'-6"	2000	317
	16'-0"	16'-10"	8'-0"	9'-0"	2212	511
	17'-0"	17'-10"	8'-6"	9'-6"	1837	506
	18'-0"	18'-10"	9'-0"	10'-0"	1705	552
	19'-0"	19'-10"	9'-6"	10'-6"	1528	570
	20'-0"	20'-10"	10'-0"	11'-0"	1336	600

The above table is based on 1/550 deflection ratio.



Application

Unified overhanging bridge cranes are designed for the suspension of portable spotweld guns, power tools, balancers, hoists, fixtures etc. and other loads not exceeding recommended rated loads. See next page for rated loads of various overhangs.

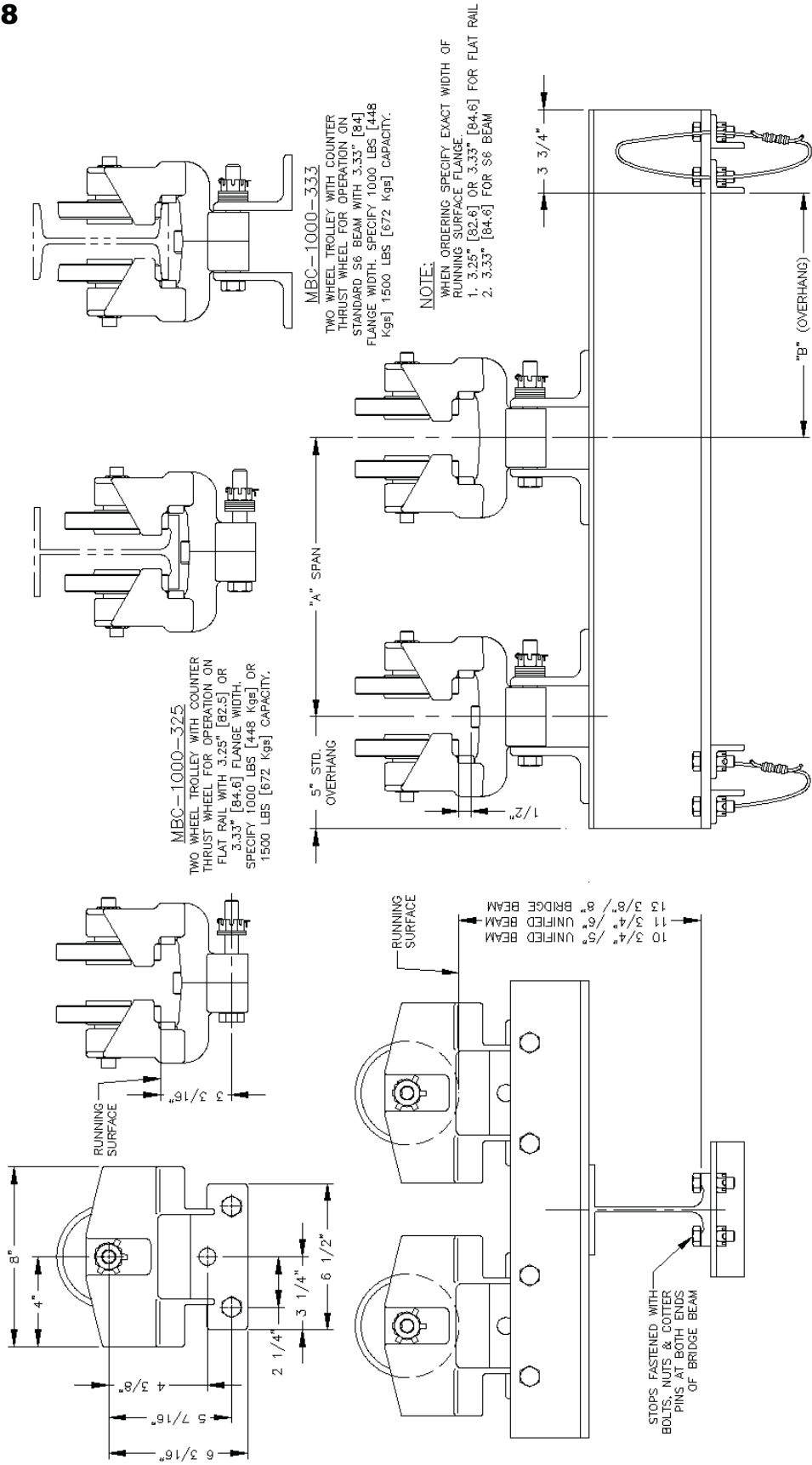
Specifications

Unified overhanging bridge cranes consist of two end truck assemblies, mounted with two MBC-1000 trolleys without kickup wheels and two MBC-1000 trolleys with kickup wheels on opposite end of overhang, supporting a bridge beam. The bridge beam is a compound section with a hardened and ground flat rail 3.25" in width. See next page for various spans and rated loads.

End trucks are mounted with trolleys for operation on either flat rail or S-Beam. End stops bolted to each end of the bridge beam complete the assembly. Spans of 10 feet or more have diagonal bracing from bridge beam to end trucks.

Options

- Bridge beam overhang opposite of regular overhang to suit your requirements
- Standard redundant end stops



MBC-1000-325
TWO WHEEL TROLLEY WITH COUNTER THRUST WHEEL FOR OPERATION ON FLAT RAIL WITH 3.25" [82.5] OR 3.33" [84.6] FLANGE WIDTH. SPECIFY 1000 LBS [448 Kgs] OR 1500 LBS [672 Kgs] CAPACITY.

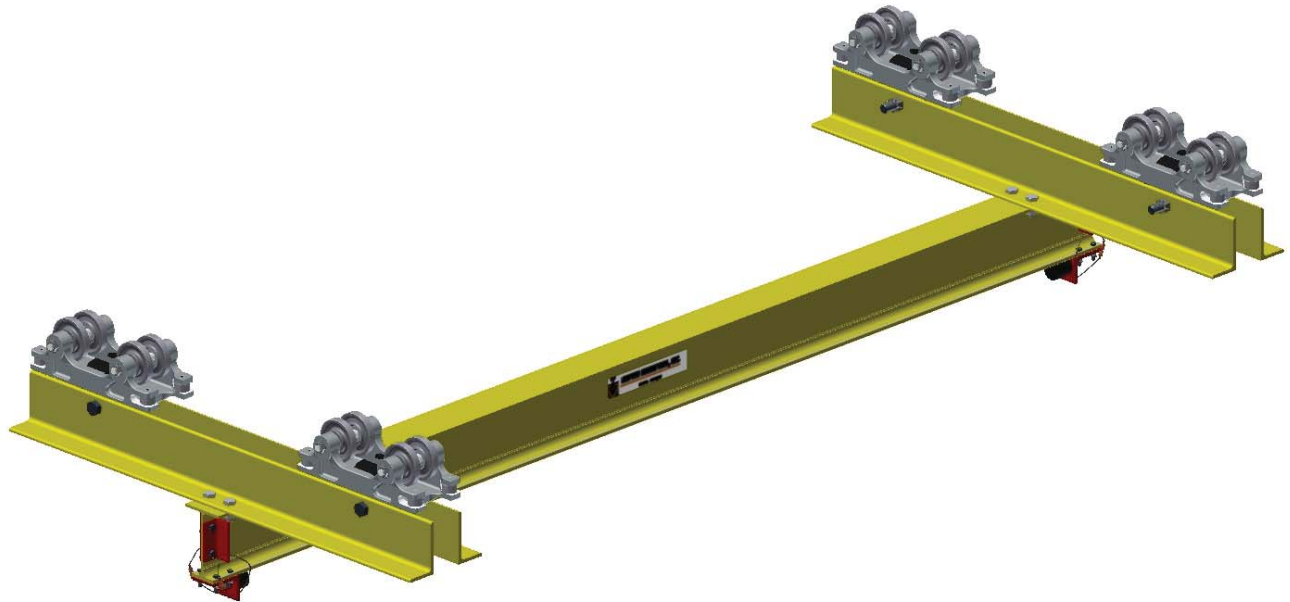
MBC-1000-333
TWO WHEEL TROLLEY WITH COUNTER THRUST WHEEL FOR OPERATION ON STANDARD S6 BEAM WITH 3.33" [84] FLANGE WIDTH. SPECIFY 1000 LBS [448 Kgs] OR 1500 LBS [672 Kgs] CAPACITY.

NOTE:
WHEN ORDERING SPECIFY EXACT WIDTH OF RUNNING SURFACE FLANGE.
1. 3.25" [82.6] OR 3.33" [84.6] FOR FLAT RAIL
2. 3.33" [84.6] FOR S6 BEAM

TROLLEY SPECIFICATIONS
RATED LOAD: 1000 LBS. [448 Kgs]
WEIGHT: 16 LBS. [7.2 Kgs]
BODY: HIGH TENSILE ALMAG
WHEEL: 4.625" [117.48] DIA.
STUD: 5/8" [15] DIA.
ROLLERS: BALL BEARING HARDENED & GROUND

OVERHANG LOAD RATING FOR 8" BRIDGE BEAM				OVERHANG LOAD RATING FOR 5" UNIFIED BRIDGE BEAM								
"A" FT.	"X" (MM)	LBS	KGS	B=36" (914MM)	B=42" (1066MM)	B=48" (1219MM)	B=12" (304MM)	B=18" (457MM)	B=24" (609MM)	B=30" (762MM)	B=36" (914MM)	
3	914	1850	839	1500	672	1350	605	914	2000	896	1800	806
4	1524	1950	883	1500	752	1500	787	4	1524	2000	896	1500
6	1524	2050	927	1500	832	1650	826	12	3657	2000	896	1500
12	3657	2500	1120	2400	1075	2300	1030					

The above table is based on 1/550 deflection ratio.



Application

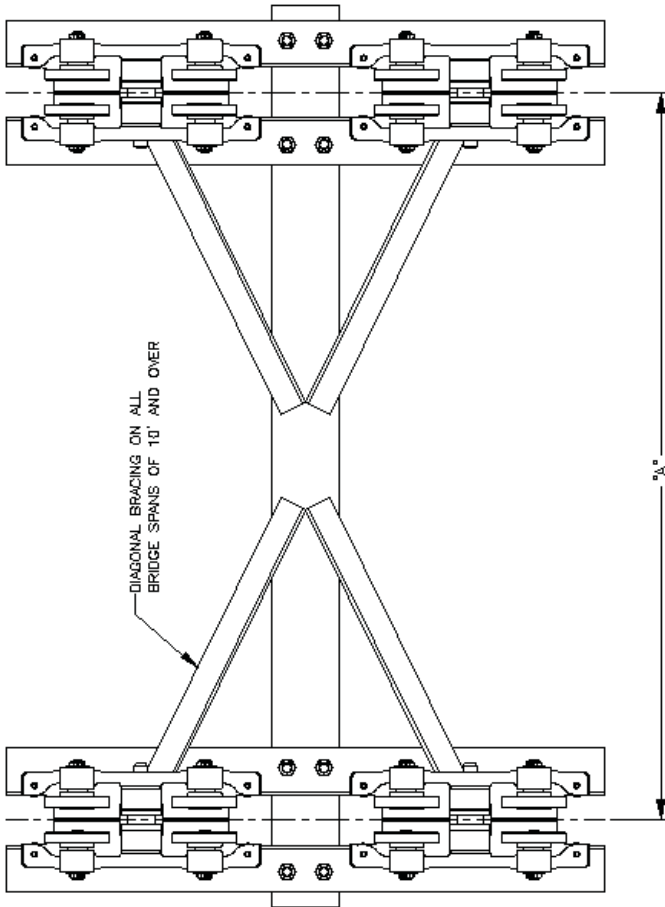
Unified heavy load bridge cranes are designed for the suspension of balancers, hoists, fixtures, heavy portable tools etc. and other heavy loads not exceeding 8000 pounds.

Specifications

Unified heavy load bridge cranes consist of two end truck assemblies, mounted with BT- 325-10, supporting a bridge beam. The bridge beam is a compound section either 8" or 8 1/2" in height with a hardened and ground flat track 3.25" in width. (See trolley section for trolley specifications). End trucks are mounted with trolleys for operation on either flat rail or S-beam. Bolted end stops with neoprene bumpers complete the assembly. Spans of 10 feet or more have diagonal bracing from bridge beam to end trucks.

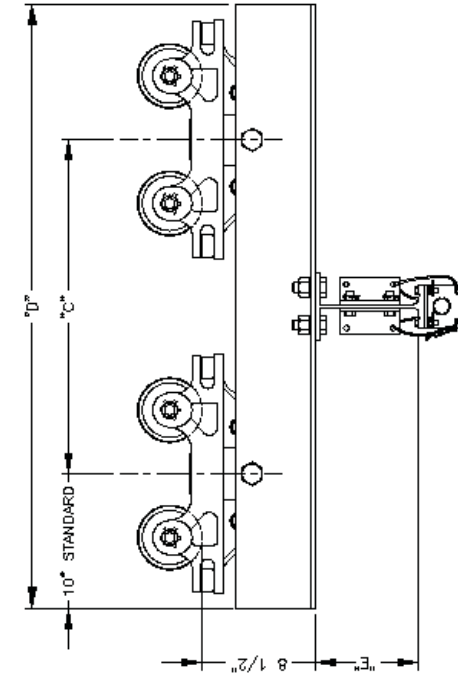
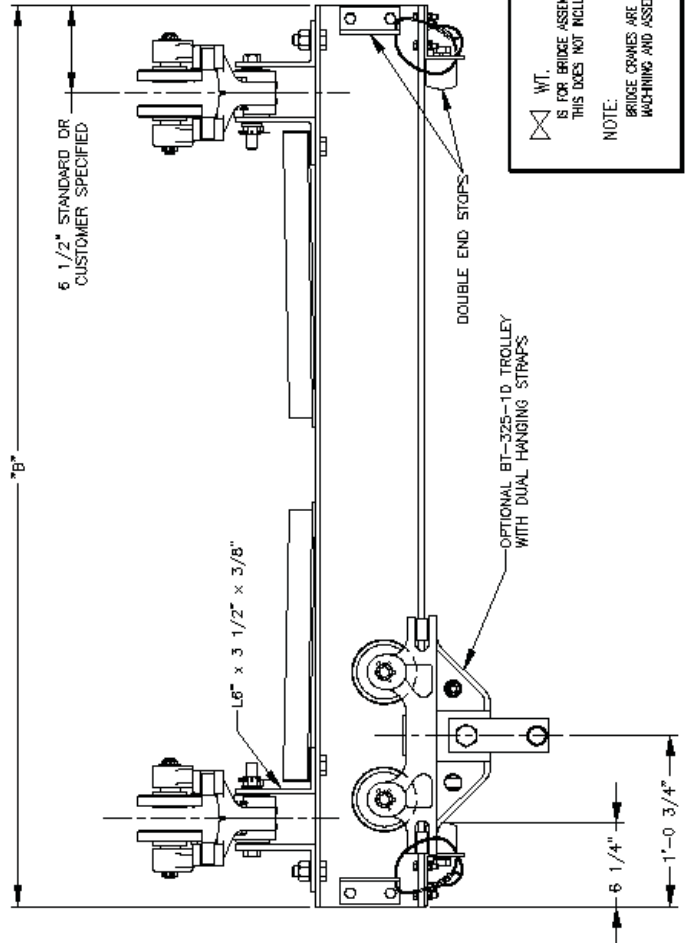
Options

- Bridge beam overhang to your specifications
- Counter thrust wheels can be furnished on request when suspended load must be extended beyond bridge span
- 10" compound section bridge beam with hardened and ground flat rail 3.25" in width
- Standard redundant end stops



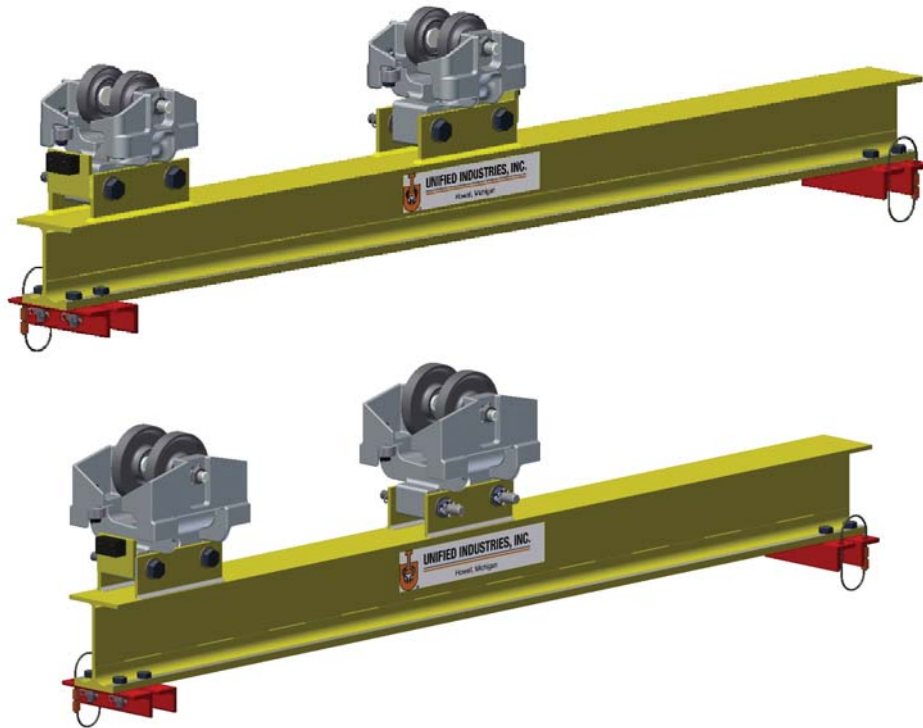
HEAVY LOAD BRIDGE CRANE ASSEMBLY									
BRIDGE		END TRUCK		PAIRED LOAD		WEIGHT COMPLETE			
SPAN	OVERALL	WHEEL BASE	OVERALL	Lb	kg	Lb	kg		
"A" (mm)	"B" (mm)	"C" (mm)	"D" (mm)						
5'-0" (1524.0)	6'-1" (1854.2)	2'-0" (609.6)	3'-8" (1117.6)			461	209		
6'-0" (1828.8)	7'-1" (2159.0)					477	216		
7'-0" (2133.6)	8'-1" (2463.8)			6000	2688	516	234		
8'-0" (2438.4)	9'-1" (2768.6)					532	241		
9'-0" (2743.2)	10'-1" (3073.4)					572	259		
10'-0" (3048.0)	11'-1" (3378.2)					635	288		
11'-0" (3352.8)	12'-1" (3683.0)					652	296		
12'-0" (3657.6)	13'-1" (3987.8)					688	317		
13'-0" (3962.4)	14'-1" (4292.6)					719	326		
14'-0" (4267.2)	15'-1" (4597.4)					768	344		
15'-0" (4572.0)	16'-1" (4902.2)					774	351		
14'-0" (4267.2)	15'-1" (4597.4)			6000	2688	811	368		
15'-0" (4572.0)	16'-1" (4902.2)					831	377		
16'-0" (4876.8)	17'-1" (5207.0)			4500	2016	883	401		
17'-0" (5181.6)	18'-1" (5511.8)					903	410		
18'-0" (5486.4)	19'-1" (5816.6)			3500	1568	973	441		
19'-0" (5791.2)	20'-1" (6121.4)			3100	1388	983	450		
20'-0" (6096.0)	21'-1" (6426.2)			2800	1254	1036	470		

The above table is based on 1/550 deflection ratio.



WT. IS FOR BRIDGE ASSEMBLY INCLUDING END TRUCK TROLLEYS. THIS DOES NOT INCLUDE LOAD SUSPENSION TROLLEY.

NOTE: BRIDGE CRANES ARE ALL JIGGED AND FITURED IN WORKING AND ASSEMBLY TO INSURE PROPER ALIGNMENT



Application

Unified light and medium duty telescoping units are designed for the suspension of portable spotweld guns, power tools balancers, hoists fixtures etc. and other light or medium weight loads not exceeding recommended rated loads. See next page for rated loads of various extensions.

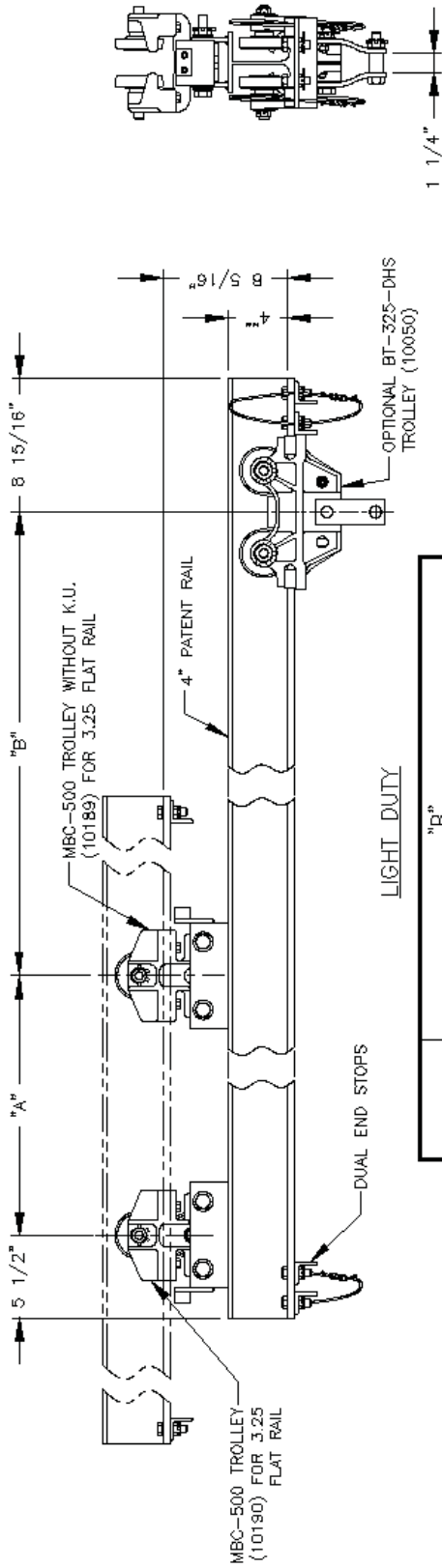
Specifications

Unified light and medium duty telescoping units consist of one two-wheel and one three-wheel trolley or carrier head opposite of overhang, mounted to a transfer beam. The medium duty units have a compound section, with a hardened and ground flat track 3.25" in width. (See trolley section for trolley or carrier head specifications).

Transfer beam is mounted with trolleys or carrier heads for operation on either flat rail or S-Beam. End stops bolted to each end of transfer beam complete the assembly.

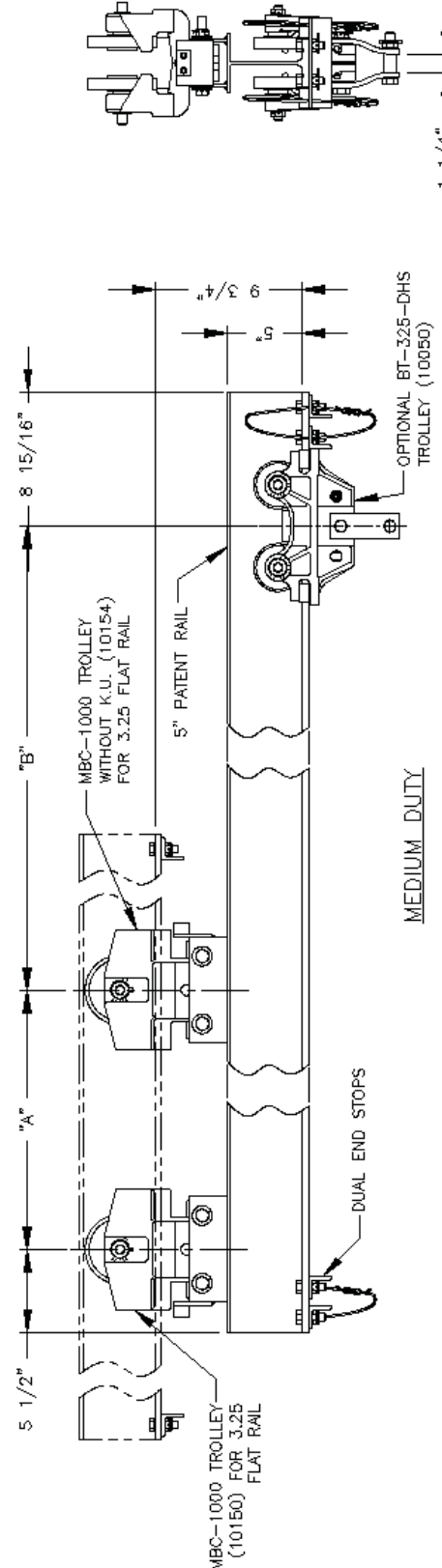
Options

- Transfer beam overhang opposite of extension to your specifications
- Standard redundant end stops



LIGHT DUTY

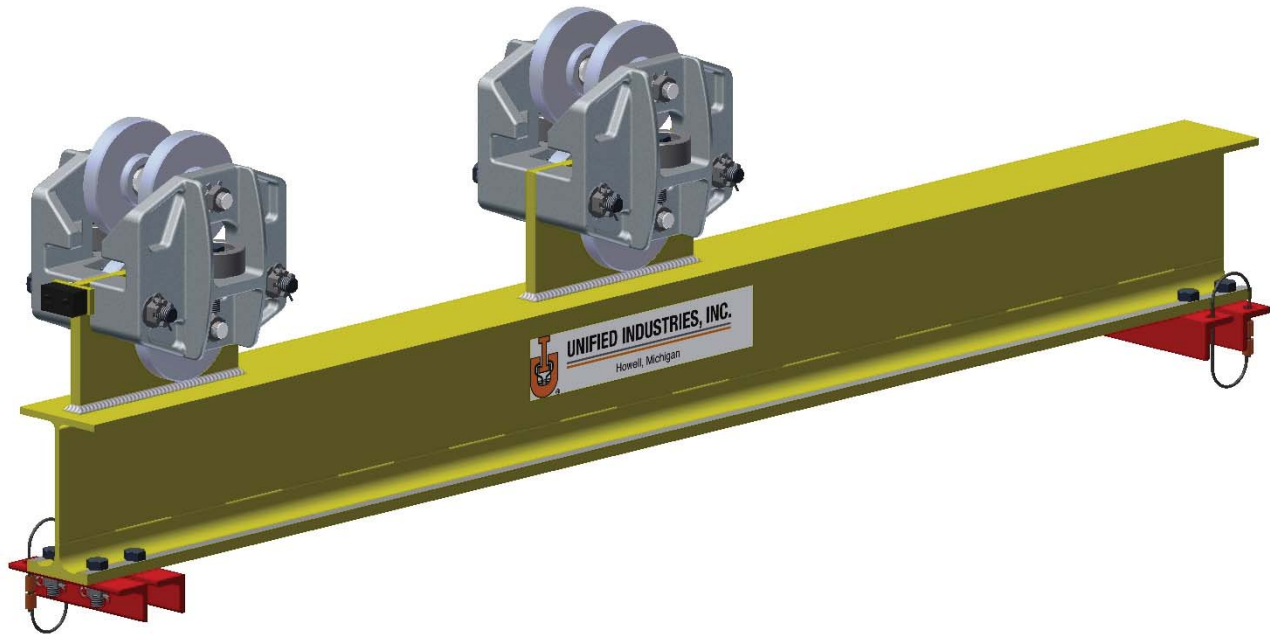
"A"		"B"					
		12" [304 mm]	24" [609 mm]	36" [914 mm]	48" [1219 mm]	60" [1524 mm]	72" [1829 mm]
18" [457 mm]	24" [609 mm]	LBs	Kgs	LBs	Kgs	LBs	Kgs
		300	136.3	210	95.4	165	75
		330	150	250	113.6	200	90.9
		355	161.3	275	125	225	102.2
						190	86.3



MEDIUM DUTY

"A"		"B"					
		12" [304 mm]	24" [609 mm]	36" [914 mm]	48" [1219 mm]	60" [1524 mm]	72" [1829 mm]
18" [457 mm]	24" [609 mm]	LBs	Kgs	LBs	Kgs	LBs	Kgs
		600	272.7	425	193.1	330	150
		665	302.2	500	227.2	400	181.8
		710	321.7	555	252.2	450	204.5
						380	172.7

The above tables are based on 1/550 deflection ratio.



Application

Unified standard duty telescoping self-equalizing tandem trolley units are designed for the suspension of portable spotweld guns, power tools, balancers, hoists, fixtures, etc., and other loads not exceeding recommended rated loads. See next page for rated loads of various extensions.

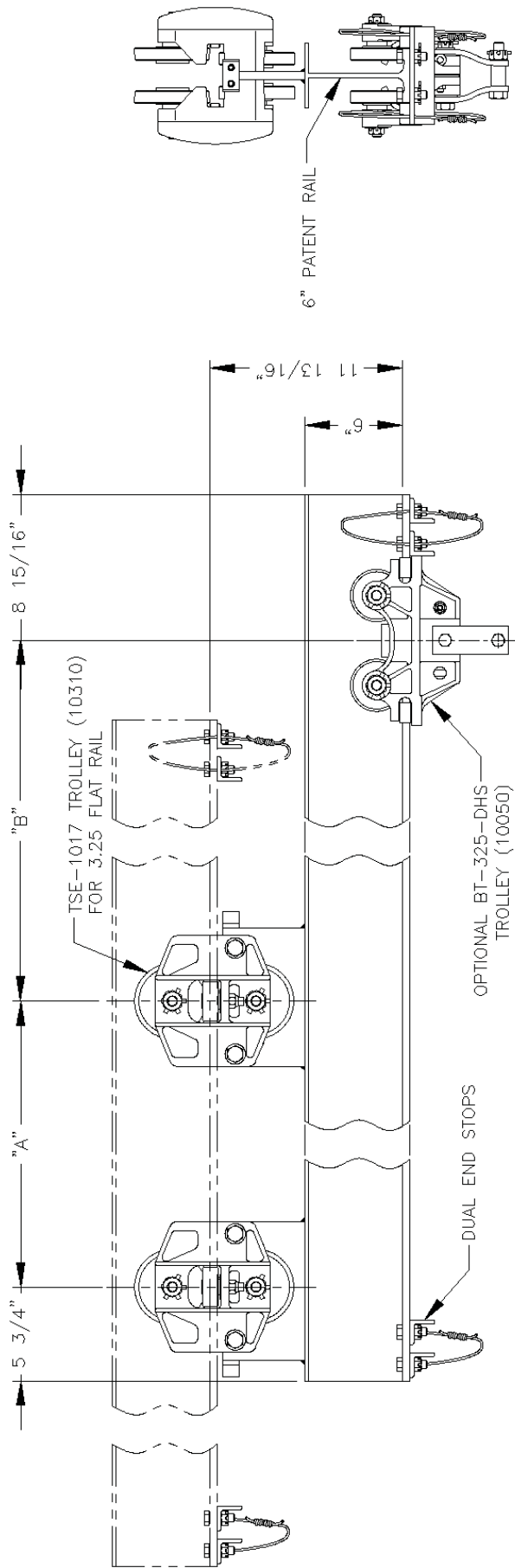
Specifications

Unified standard duty telescoping units consist of two tandem trolleys welded to a transfer beam. The transfer beam is a compound section 6.0" in height with a hardened and ground flat rail 3.25" in width. (See trolley section for trolley specifications).

Transfer beam is mounted with tandem trolleys for operation on either flat rail or S-Beam. End stops bolted to each end of transfer beam complete the assembly.

Options

- Transfer beam overhang opposite of extension to your specifications ("C" dimension).
- Standard redundant end stops



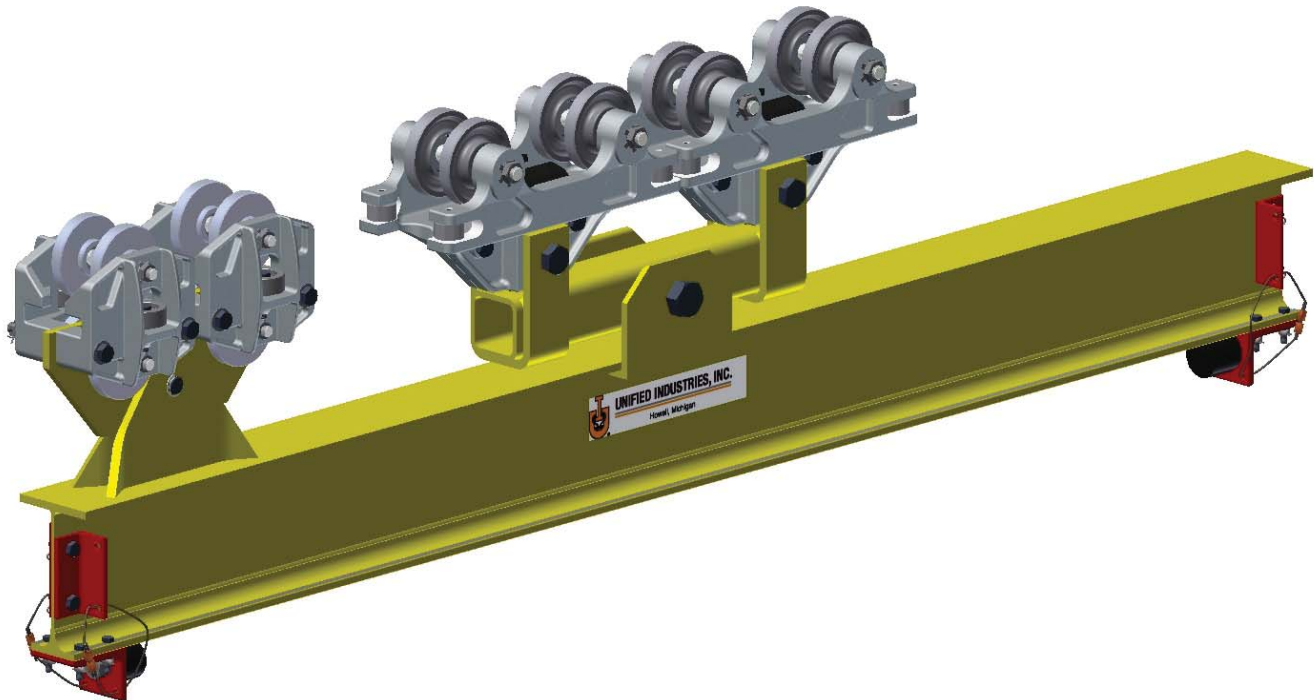
TROLLEY SPECIFICATIONS

RATED LOAD: 2,500 LBS. (1120 Kgs)
 WEIGHT: 31 LBS. (14 Kgs)
 BODY: HIGH TENSILE ALMAG
 WHEEL: 4 5/8" [117] DIA.
 STUD: 5/8" [15] DIA.

NOTE:
 WHEN ORDERING SPECIFY EXACT WIDTH OF RUNNING SURFACE FLANGE.
 1. 3.25" [82.6] FOR STD. FLAT RAIL AND 3.33" [84.6] FLAT RAIL
 2. 3.33" [84.6] FOR SG BEAM

"A"		DIMENSION "B" EXTENDED LOAD RATINGS IN POUNDS & KILOGRAMS											
IN.	MM	12"	304 mm	24"	609 mm	36"	914 mm	48"	1219 mm	60"	1524 mm	72"	1828 mm
18	457	1500 LBS	681.8 KGS	1070 LBS	486.3 KGS	830 LBS	377.2 KGS	680 LBS	309 KGS	575 LBS	261.3 KGS	500 LBS	227.2 KGS
24	609	1665 LBS	756.8 KGS	1250 LBS	568.1 KGS	1000 LBS	454.5 KGS	830 LBS	377.2 KGS	710 LBS	322.7 KGS	585 LBS	265.9 KGS
30	762	1785 LBS	811.3 KGS	1385 LBS	629.5 KGS	1135 LBS	515.9 KGS	960 LBS	436.3 KGS	750 LBS	340.9 KGS	550 LBS	250 KGS
36	914	1875 LBS	852.2 KGS	1500 LBS	681.8 KGS	1250 LBS	568.1 KGS	1000 LBS	454.5 KGS	700 LBS	318.1 KGS	520 LBS	236.3 KGS
42	1066	1940 LBS	881.8 KGS	1590 LBS	722.7 KGS	1345 LBS	611.3 KGS	930 LBS	422.7 KGS	660 LBS	300 KGS	495 LBS	225 KGS
48	1219	2000 LBS	909 KGS	1665 LBS	756.8 KGS	1330 LBS	604.5 KGS	875 LBS	397.7 KGS	625 LBS	284 KGS	470 LBS	213.6 KGS

The above table is based on 1/550 deflection ratio.



Application

Unified heavy duty telescoping self-equalizing tandem trolley units are designed for the suspension of portable spotweld guns, power tools, balancers, hoists, fixtures, etc., and other loads not exceeding recommended rated loads. See next page for rated loads of various extensions.

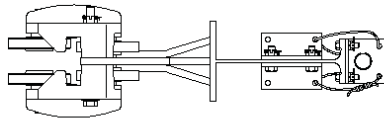
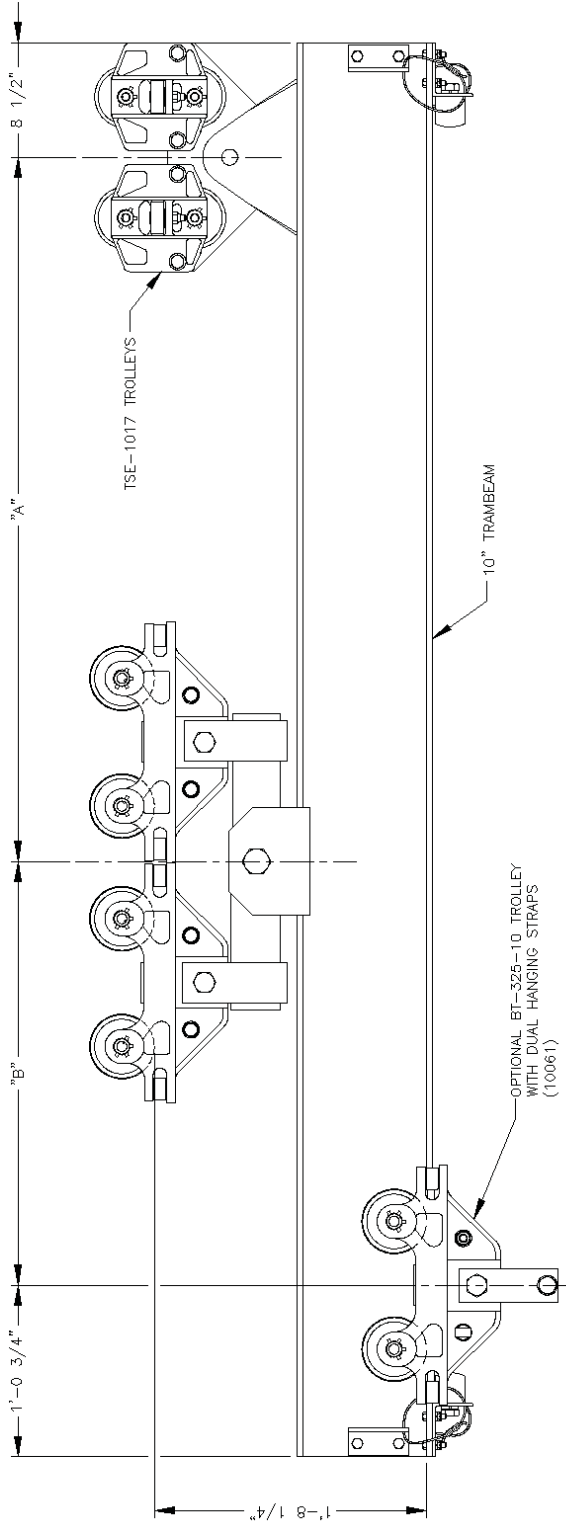
Specifications

Unified heavy duty telescoping units consist of two tandem trolleys welded to a transfer beam.

Transfer beam is mounted with tandem trolleys for operation on either flat rail or S-Beam. End stops bolted to each end of transfer beam complete the assembly.

Options

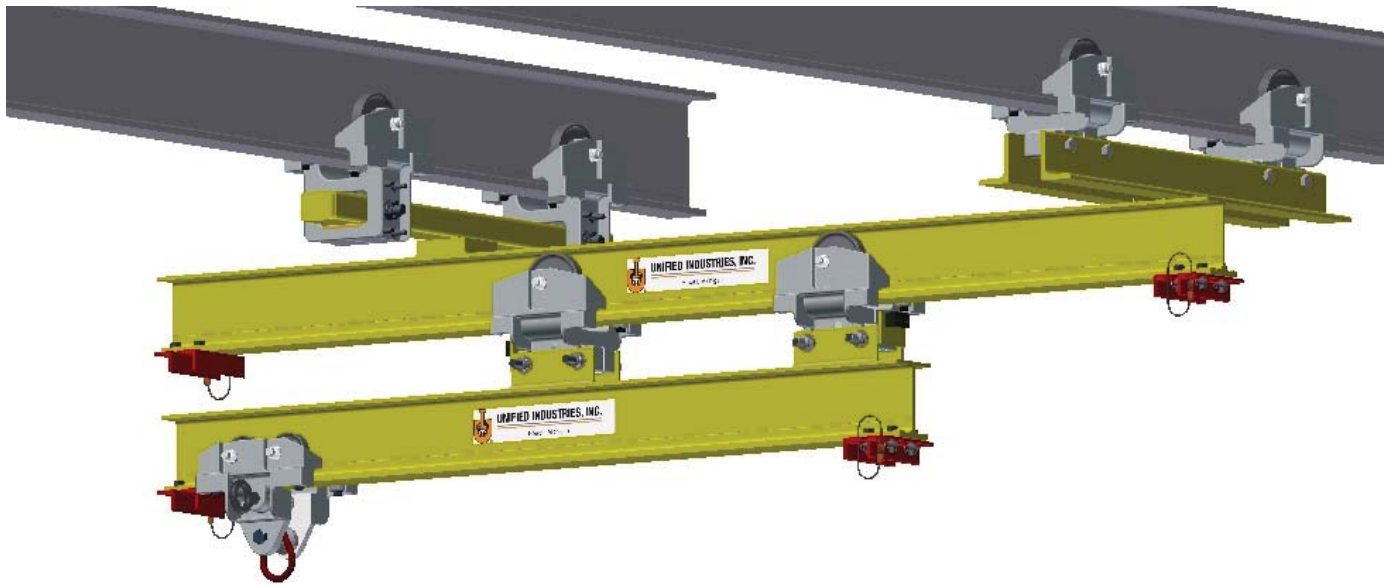
- Transfer beam overhang opposite of extension to your specifications ("C" dimension).



BEAM SIZE	"A"		"B" LOAD IN POUNDS AND KILOGRAMS							
	36"	48"	60"	72"	84"	96"	108"	120"	132"	144"
10"	4000 LBS	3425 LBS	3000 LBS	2225 LBS	1828 mm	1524 mm	1363.6 KGS	1011.3 KGS	812.8 KGS	635.0 KGS
10"	4570 LBS	3750 LBS	2660 LBS	2000 LBS	1209 KGS	909 KGS	1209 KGS	2000 LBS	909 KGS	909 KGS
11 1/2"	5000 LBS	4440 LBS	3650 LBS	2760 LBS	2018.1 KGS	1659 KGS	1659 KGS	2760 LBS	1254.5 KGS	1254.5 KGS
11 1/2"	5330 LBS	4550 LBS	3330 LBS	2540 LBS	2422.7 KGS	2086.1 KGS	1513.6 KGS	2540 LBS	1154.5 KGS	1154.5 KGS

FOR ADDITIONAL LOADS AND DIMENSIONS, CONSULT FACTORY.

The above table is based on 1/550 deflection ratio.



Unified bridge crane and telescope unit combination for extending loads beyond normal span of runway.

Unified self-aligning carrier SAC-1020-1 used for runways that are not parallel.

Unified anti kick-up carrier MBC-1000-3 for opposing counter thrust of extended load.

CAUTION

This bridge crane has a safe load rating, which has been clearly marked on both sides by the manufacturer. The total weight of the suspended load should never exceed 125% of this limit. The weight of all handling devices such as buckets, magnets, grabs, balancers, hoists, weldguns, etc. must be included as a part of the suspended load. The weight of such devices should therefore be determined and clearly marked.

Consideration should be given when installing hoisting devices. Load ratings for such devices may exceed the load rating of the bridge crane.

The operator should inspect this bridge crane for loose bolts and worn, cracked or distorted parts prior to use (inspection should include all handling devices and mounting equipment). Defective parts should be replaced with manufacturer-approved parts before use of bridge crane is resumed.

This bridge crane conforms to the safety standards of the U.S. Occupational Safety and Health Administration (OSHA). Any alteration of its structure or change in its rated load capacity may render null and void any manufacturer's warranties, expressed or implied.

***All dimensions are reference only
and need to be verified with factory.**



UNIFIED INDUSTRIES, INC.

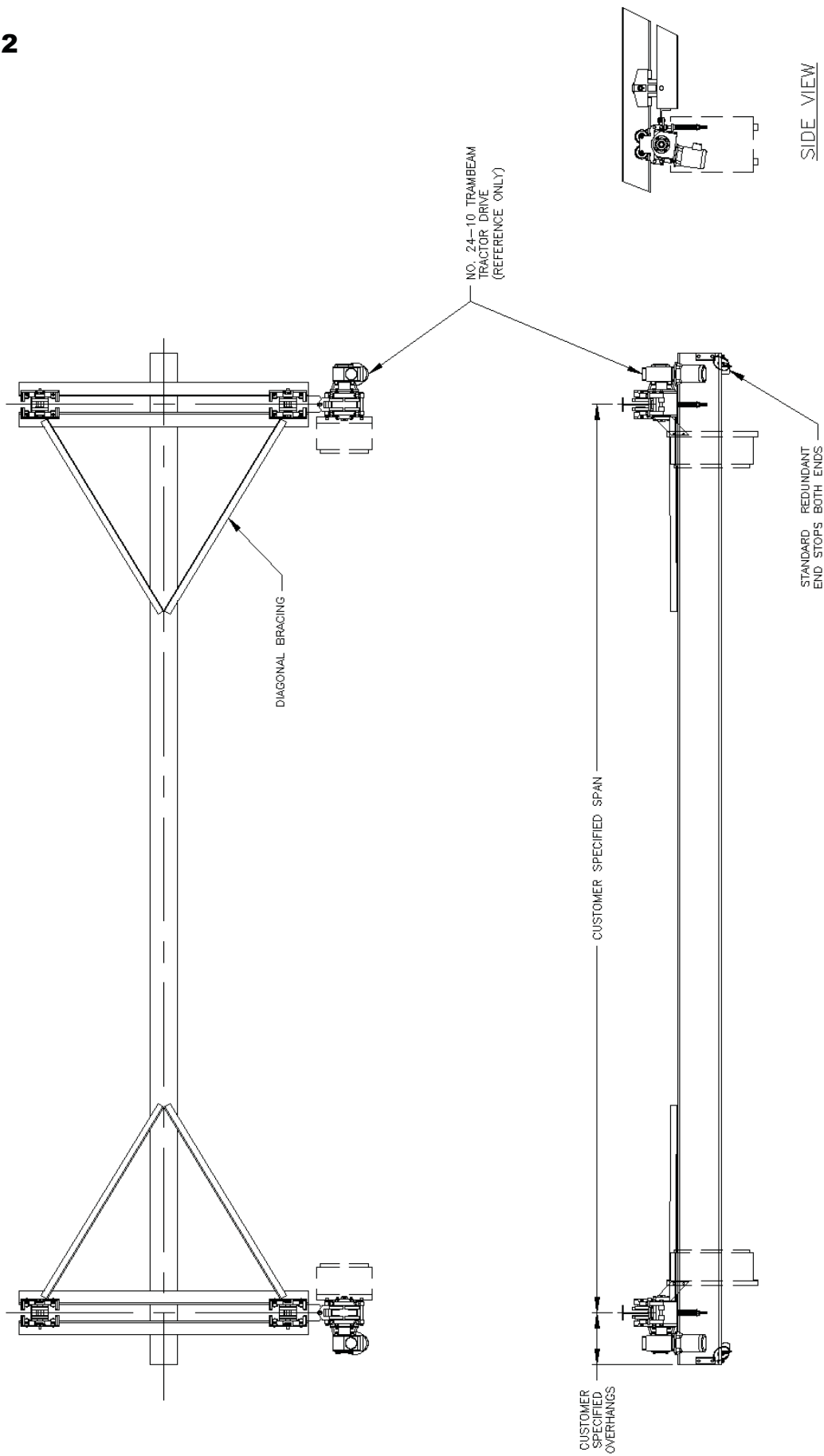
Howell, Michigan

Phone: 517-546-3220

Email: sales@unified-ind.com

MOTORIZED BRIDGE CRANES (AIR AND ELECTRIC)





UNIFIED MOTORIZED BRIDGE CRANE
ELECTRIC AND AIR OPERATED
(SHOWN) (NOT SHOWN)