



UNIFIED INDUSTRIES, INC.

Howell, Michigan
Phone: 517-546-3220

**PATENT RAIL
AND
STANDARD
SHAPES
TROLLEYS**



	PAGE
Application Chart.....	2
Two Wheel Festoon Trolleys 150 lb. Maximum Rated Load	3-4
Four Wheel Trolleys 250 lb. Maximum Rated Load	5-6
Two Wheel Trolley Standard Carrier Head 500 lb. Rated Load	7-8
Three Wheel Trolley Cantilever Counter Thrust 500 lb. Rated Load	9-10
Two Wheel Articulating Trolley 500 lb. Rated Load	11-12
Two Wheel Self Aligning Trolley 500 lb. Rated Load	13-14
Four Wheel Universal Trolley 500 lb. Maximum Rated Load.....	15-16
Four Wheel Universal Trolley 1000 lb. Maximum Rated Load.....	17-18
Two Wheel Carrier Head 1000 or 1500 lb. Maximum Rated Load	19-20
Three Wheel Carrier Head 1000 or 1500 lb. Maximum Rated Load	21-22
Articulating Two Wheel Carrier Head 1000 or 1500 lb. Maximum Rated Load	23-24
Self Aligning Two Wheel Carrier Head 1000 or 1500 lb. Maximum Rated Load	25-26
Four Wheel Safety Trolleys 2000 lb. Maximum Rated Load.....	27-28
Four Wheel Tandem Trolley 2500 lb. Maximum Rated Load	29-30
Four Wheel Safety Trolleys 4000 lb. Maximum Rated Load.....	31-32
Caution Statement.....	33

***All dimensions are reference only
and need to be verified with factory.**



MODEL NUMBER	RATED LOAD POUNDS	Kg	SAFETY CLEVIS	FOR OPERATION ON:				ADJUST-ABLE WIDTH	SEE PAGE
				3.25" FLAT RAIL	4" "S" BEAM	6" S" BEAM	3.33" FLAT TRACK		
FT-325 FT-266 FT-333	150	68	NO	X	X	X	X	NO	3-4
MT-250-B	250	113	LUG	X	X	X	X	YES	5-6
MBC-500 MBC-500-4	500	228	LUG	X	X	X	X	NO	7-8
MBC-500 W/KU MBC-500-4 W/KU	500	228	LUG	X	X	X	X	NO	9-10
AC-500-2 AC-500-2-4	500	228	LUG	X	X	X	X	NO	11-12
SAC-500-2 SAC-500-2-4	500	228	LUG	X	X	X	X	NO	13-14
UT-500	500	228	LUG	X	X	X	X	YES	15-16
UT-1000	1000	453	LUG	X	X	X	X	YES	17-18
MBC-1000 MBC-1500	1000 or 1500	453 or 680	LUG	X		X	X	NO	19-20
MBC-1000 W/KU MBC-1500 W/KU	1000 or 1500	453 or 680	LUG	X		X	X	NO	21-22
AC-1027-1	1000 or 1500	453 or 680	LUG	X		X	X	NO	23-24
SAC-1020-1	1000 or 1500	453 or 680	LUG	X		X	X	NO	25-26
BT-325 BT-266 BT-333	2000	907	STEEL	X	X		X	NO	27-28
TSE-1017-1	2500	1134	LUG	X		X	X	NO	29-30
BT-325-10 BT-333-10	4000	1814	STEEL	X		X	X	NO	31-32

PAGE 3

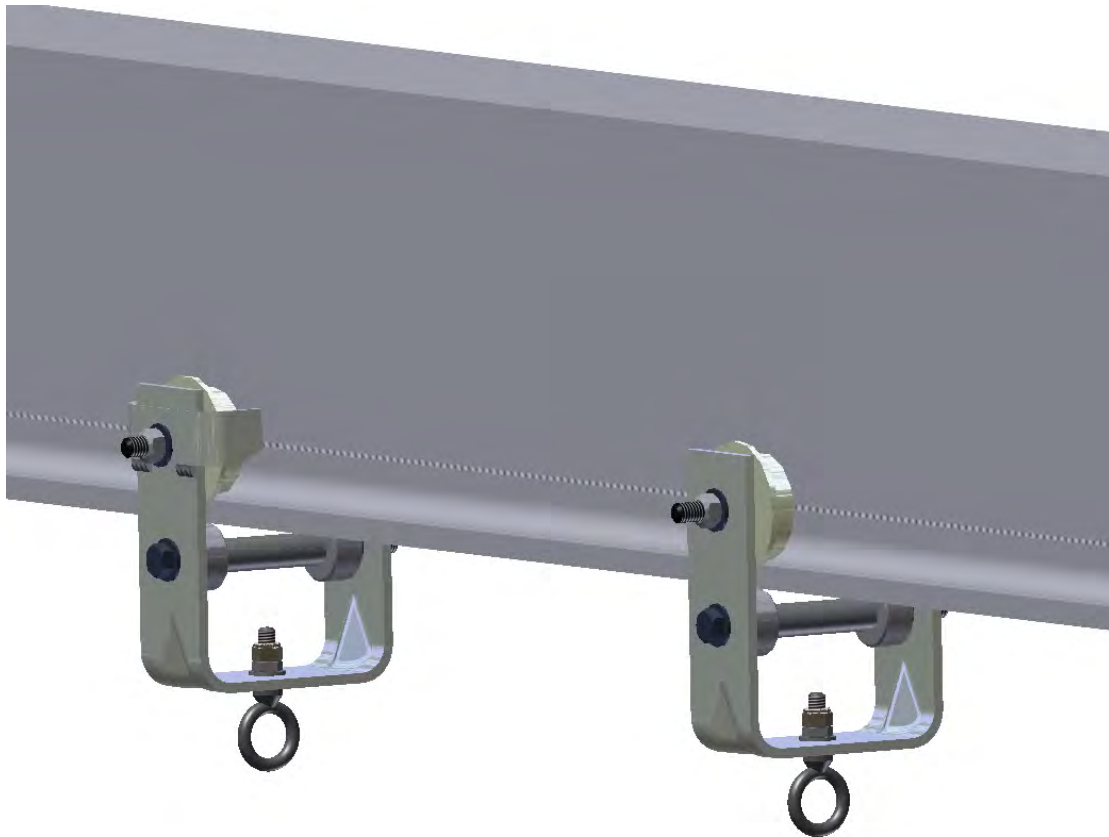
PATENT RAIL AND
STANDARD SHAPES
TROLLEYS

UNIFIED
TWO WHEEL
FESTOON TROLLEYS
150 POUND
MAXIMUM RATED LOAD



UNIFIED INDUSTRIES, INC.

Howell, Michigan



Part Number

- **10080** FT-233 for operation on 2.33" flange 3" S-Beam
- **10100** FT-266 for operation on 2.66" flange 4" S-Beam
- **10120** FT-325 for operation on 3.25/3.33" flange flat rail
- **10135** FT-333 for operation on 3.33" flange 6" S-Beam

Trolleys with Bumpers

- **10090** FT-233-B for operation on 2.33" flange 3" S-Beam
- **10110** FT-266-B for operation on 2.66" flange 4" S-Beam
- **10130** FT-325-B for operation on 3.25/3.33" flange flat rail
- **10137** FT-333-B for operation on 3.33" flange 6" S-Beam

Application

- For festooning of cable or hose along runway
- For suspension of small portable tools
- For suspension of light duty balancers

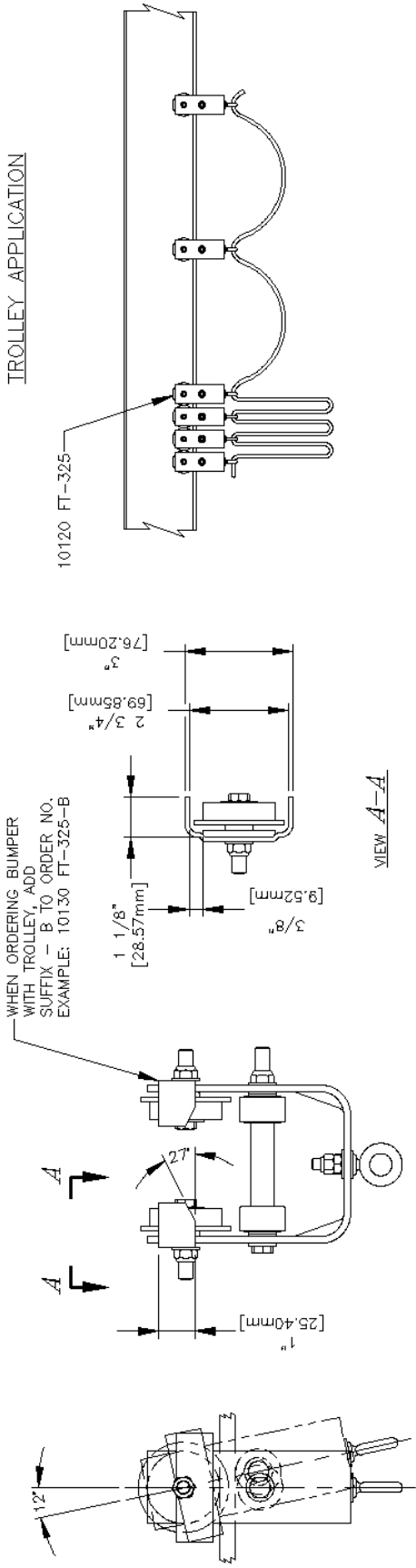
Features

- 2 inch diameter ball bearing flanged load wheels
- Flat or tapered tread for flat rail or S-Beam
- Flat ball bearing "kick-up" wheels
- Bumpers are optional
- Fits up to 7/16" max. bottom flange thickness

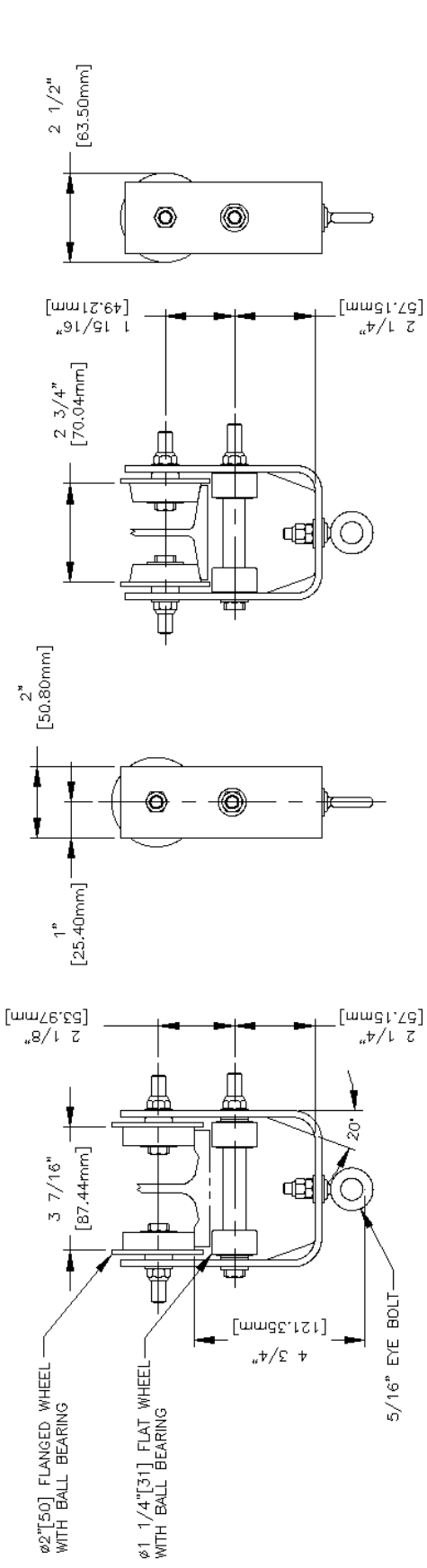
Options

- Can be furnished with various festooning saddles to accommodate either round or flat cables, consult factory.

TROLLEY APPLICATION



• ALL DIMENSIONS ARE REFERENCE ONLY



PAGE 5

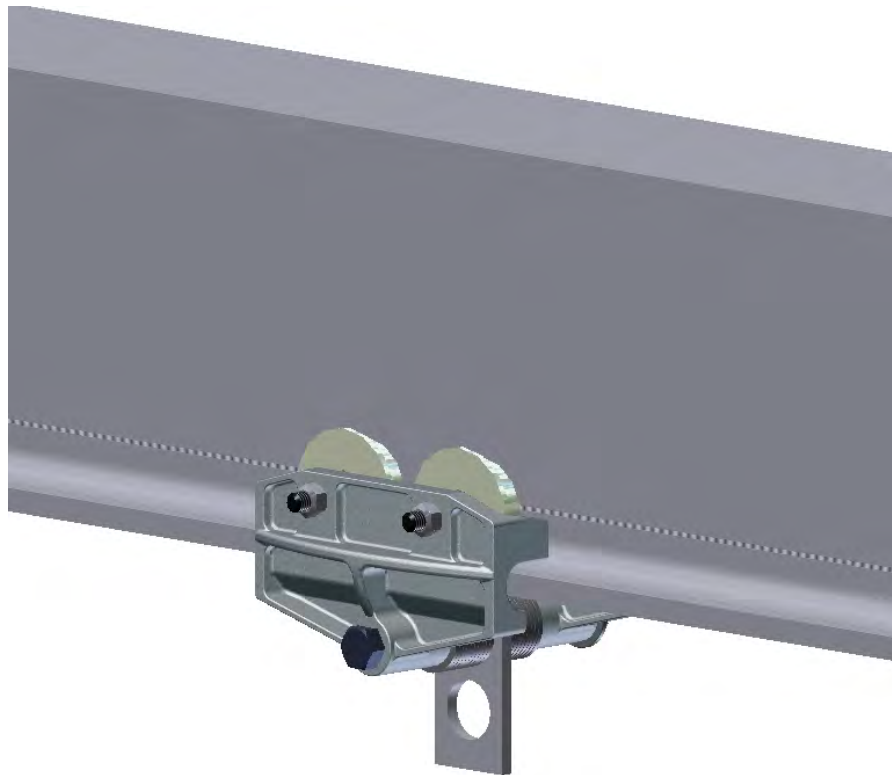
PATENT RAIL AND
STANDARD SHAPES
TROLLEYS

UNIFIED
FOUR WHEEL
TROLLEYS
250 POUND
MAXIMUM RATED LOAD



UNIFIED INDUSTRIES, INC.

Howell, Michigan



Part Number

- **10210** MT-250-B for operation on 3.25"/3.33" flange flat rail
- **10211** MT-250-B for operation on 3.33" flange 6" S-Beam
- **10212** MT-250-B for operation on 2.66" flange 4" S-Beam
- **10215** MT-250-B for operation on 2.66" flange 4" S-Beam with brass wheels

Application

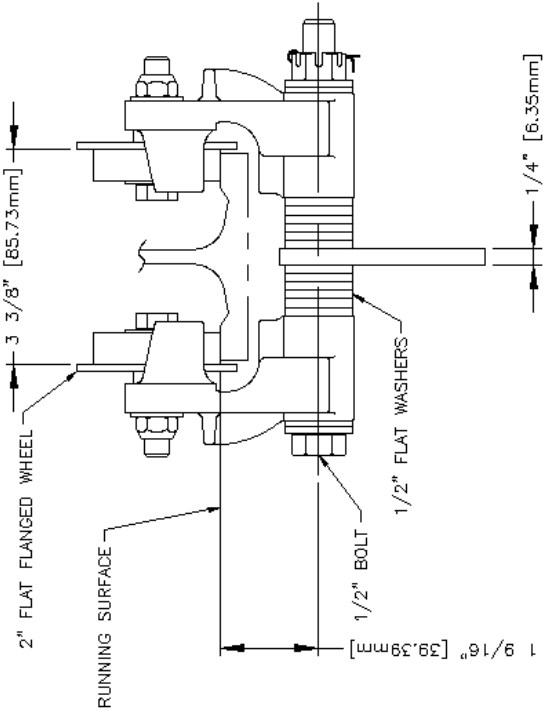
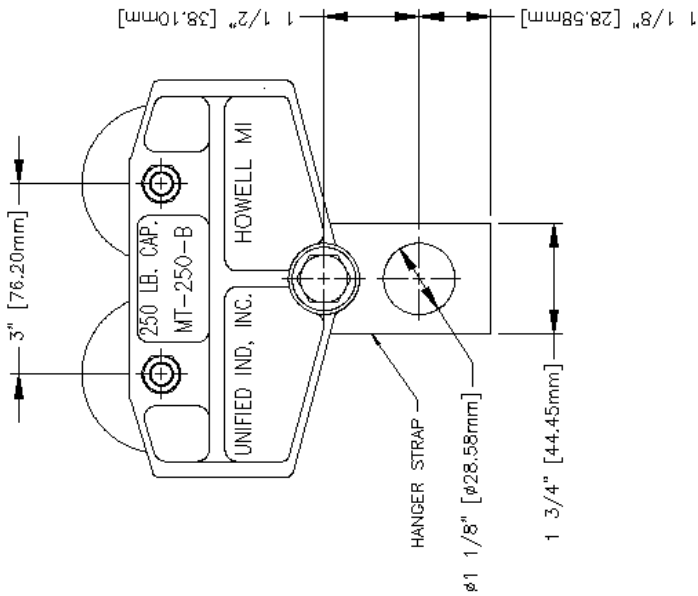
- For suspension of light duty balancer or hoist
- For suspension of portable tools or fixtures

Features

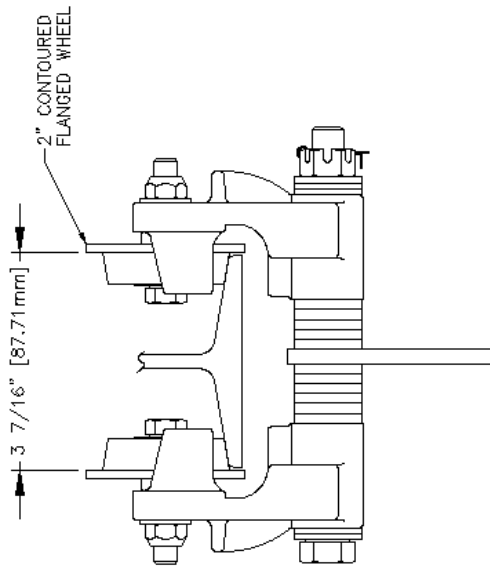
- Adjustable width to fit flat rail and 4" to 6" S-Beam
- High tensile almag alloy frames
- Built in safety lugs also prevent "kick-up"
- Ball bearing flanged load wheels for flat rail or S-Beam
- Minimum track radius is 36"
- Fits up to 9/16" max. bottom flange thickness

Options

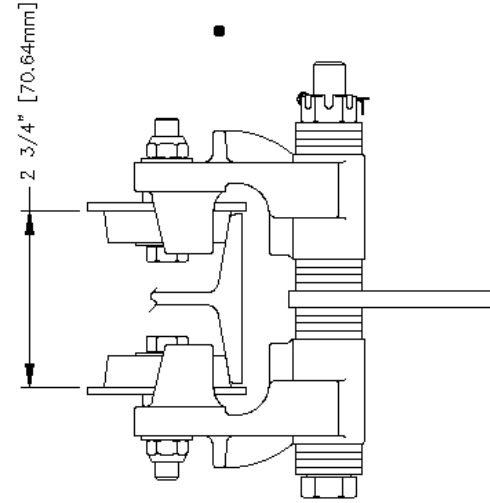
- Can be furnished with load link



10210 MT-250-B-325
FOR OPERATION ON FLAT RAIL WITH A
3.25" [82.6] OR 3.33" [84.6] FLANGE WIDTH



10211 MT-250-B-333
FOR OPERATION ON S6 BEAM
WITH A 3.33" [84.6] FLANGE WIDTH



10212 MT-250-B-266
FOR OPERATION ON S4 BEAM
WITH 2.66" [67.6] FLANGE WIDTH

10215 MT-250-B-266
WITH BRASS WHEELS FOR
OPERATION ON S4 BEAM WITH
2.66" [67.6] FLANGE WIDTH

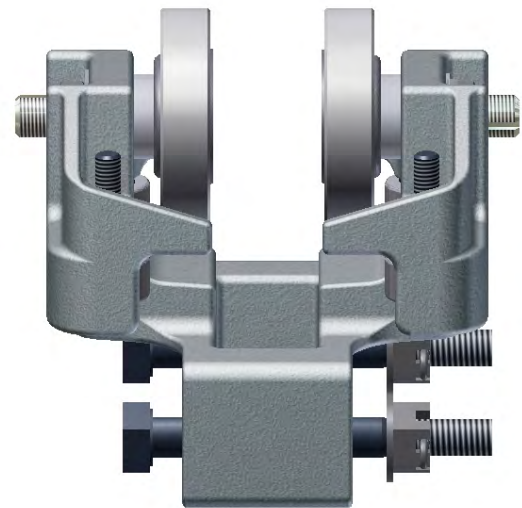
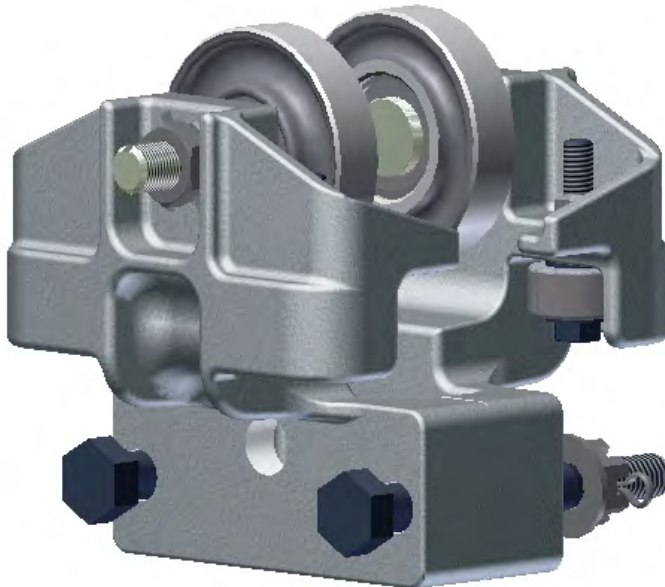
TROLLEY SPECIFICATIONS

RATED LOAD: 250 lbs. (112 kgs)
WEIGHT: 5.5 lbs. (2.5 kgs)
BODY: HIGH TENSILE ALMAG
WHEELS: 2" DIA. FLAT OR CONTOURED FLANGED
STUDD: 3/8" DIA.
BEARING TYPE: BALL THRUST BEARING, HARDENED
AND GROUND.

NOTE:

WHEN ORDERING SPECIFY WIDTH OF
RUNNING SURFACE FLANGE
3.25" FOR STD. OR SPECIAL FLAT RAIL
3.33" FOR S6 BEAM
2.66" FOR S4 BEAM

• ALL DIMENSIONS ARE REFERENCE ONLY



Part Number

- **10189** MBC-500-3-325 without kickup wheels for operation on 3.25" or 3.33" - flange flat rail
- **10192** MBC-500-3-333 without kickup wheels for operation on 3.33" flange 6" S-Beam
- **10201** MBC-500-3-4-266 without kickup wheels for operation on 2.66" flange 4" S-Beam

Application

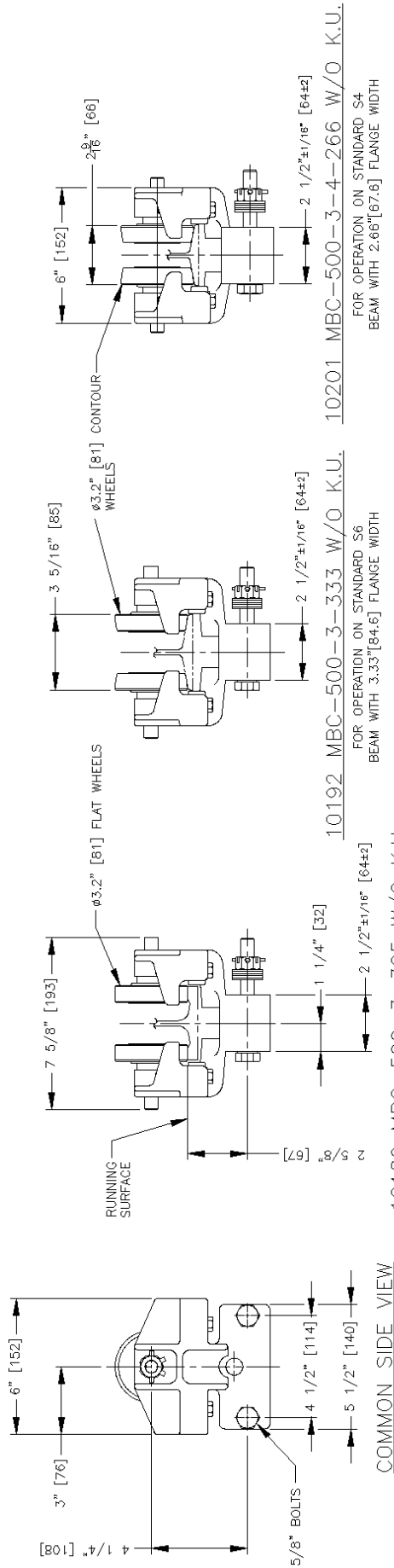
- Used in pairs for light load bridge crane end trucks
- Use in tandem for rated load to 1000 pounds

Features

- High tensile almag alloy frames
- Integral built in safety lugs
- Shielded side thrust roller protection
- Hardened ball bearing side thrust rollers
- Forged wheels 3.2" diameter flat or contoured induction hardened with permanently sealed precision ball bearings

Options

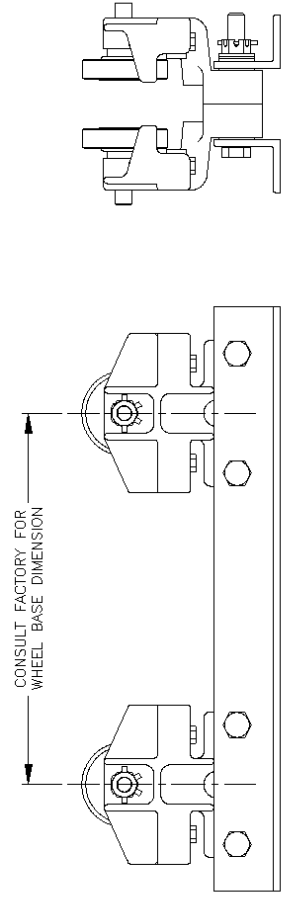
- Standard conveyor wheels 3.2" diameter flat or contoured with lubricated ball bearings
- Can be furnished as assembled end truck



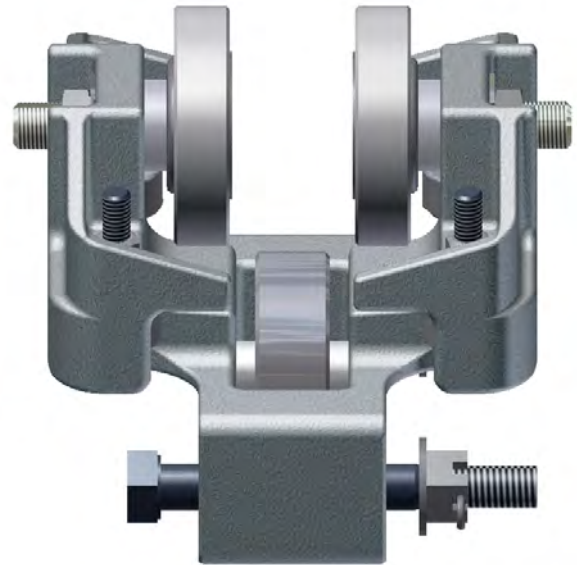
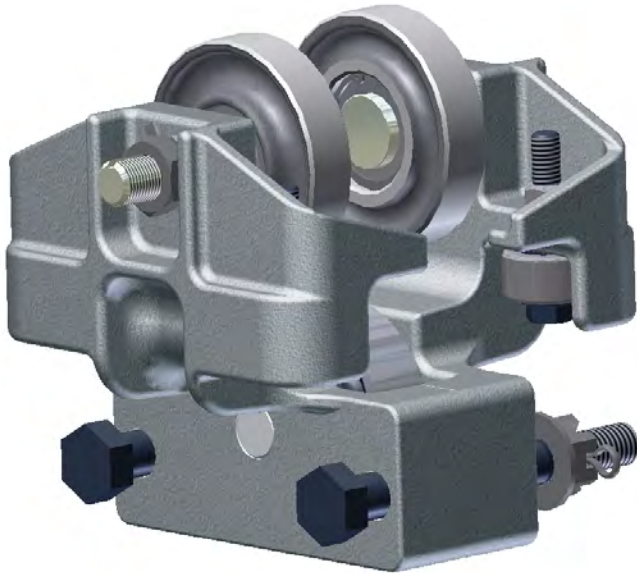
TROLLEY SPECIFICATIONS

RATED LOAD: 500 LBS. (224 Kgs)
 WEIGHT: 12 LBS. (5.4 Kgs)
 BODY: HIGH TENSILE ALMAG WHEEL: 3.2" [81] DIA.
 STUD: 5/8" [15] DIA.

NOTE:
 WHEN ORDERING SPECIFY EXACT WIDTH OF RUNNING SURFACE FLANGE.
 1. 3.25" [82.6] FOR STD. OR SPECIAL FLAT RAIL
 2. 2.66" [67.6] FOR S4 BEAM
 3. 3.33" [84.6] FOR S6 BEAM



• ALL DIMENSIONS ARE REFERENCE ONLY

**Part Number**

- **10190** MBC-500-3-325 with kickup wheels for operation on 3.25" or 3.33" - flange flat rail
- **10191** MBC-500-3-333 with kickup wheels for operation on 3.33" flange 6" S-Beam
- **10200** MBC-500-3-4-266 with kickup wheels for operation on 2.66" flange 4" S-Beam

Application

- Used in pairs on one or both ends of bridge crane to eliminate cantilever "kick-up" where overhang of bridge beam and load exceeds counter weight of bridge
- Use on light load telescope units for extending load beyond bridge crane span
- Can be adapted to tools and fixtures where cantilever rolling action is required. Third wheel engages underside of rail to eliminate possible drag

Features

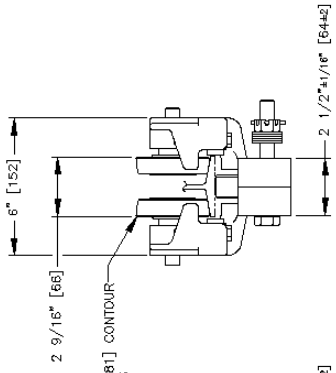
- High tensile almag alloy frames
- Integral built in safety lugs
- Shielded side thrust roller protection
- Hardened ball bearing side thrust rollers
- Forged wheels 3.2" diameter flat or contoured induction hardened with permanently sealed precision ball bearings

Options

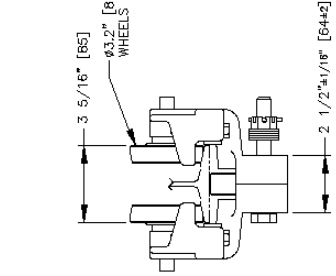
- Standard conveyor wheels 3.2" diameter flat or contoured with lubricated ball bearings
- Can be furnished as assembled end truck

TROLLEY SPECIFICATIONS
 RATED LOAD: 500 LBS. (224 Kgf)
 WEIGHT: 72 LBS. (32 Kgf)
 BODY: HIGH TENSILE STEEL
 WHEELS: 3.25" [82.6] DIA.
 STUPE: 3/8" [9.5] DIA.
 ROLLERS: BALL BEARING HARDENED & GROUND

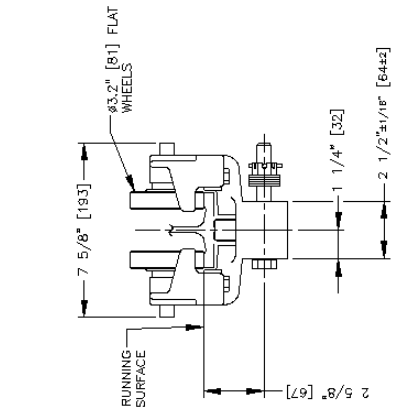
NOTE:
 WHEN ORDERING SPECIFY EXACT WIDTH OF RUNNING SURFACE FLANGE.
 1. 3.25" [82.6] FOR STD. OR SPECIAL FLAT RAIL
 2. 2.65" [67.6] FOR S4 BEAM
 3. 3.33" [84.6] FOR S6 BEAM



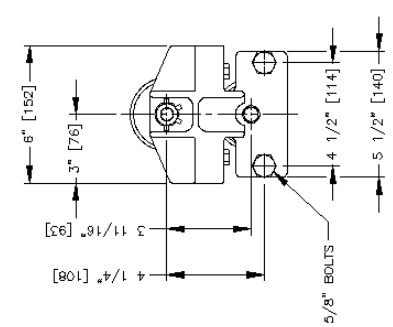
10200 MBC-500-3-4-266
 FOR OPERATION ON STANDARD S4
 BEAM WITH 2.66" [67.6] FLANGE WIDTH



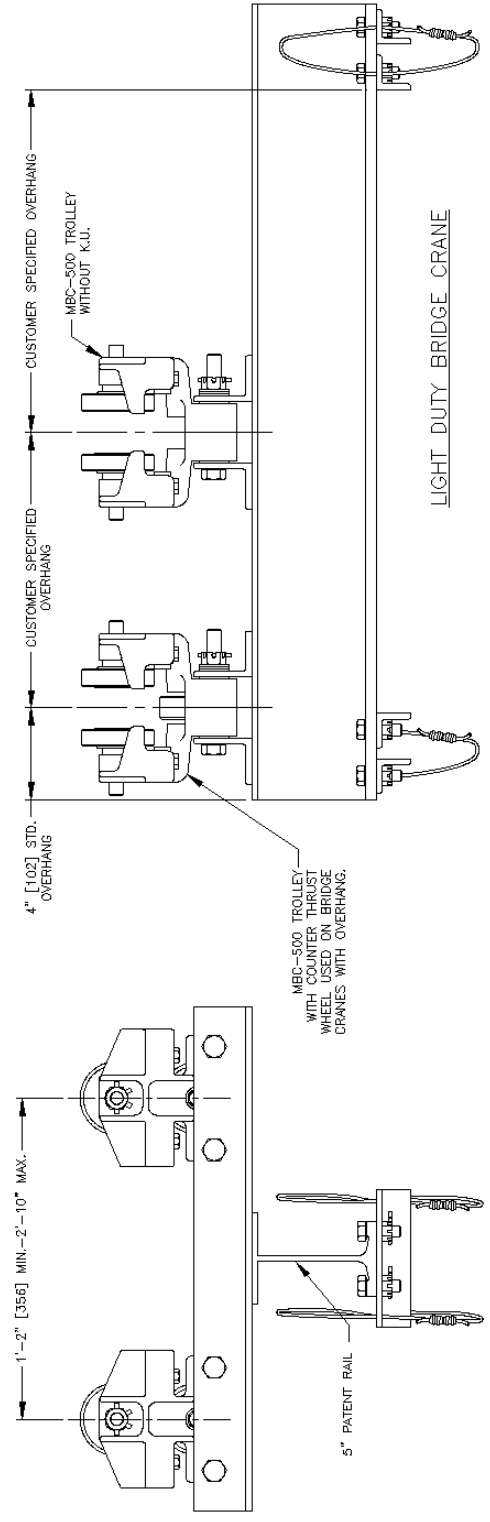
10191 MBC-500-3-333
 FOR OPERATION ON STANDARD S6
 BEAM WITH 3.33" [84.6] FLANGE WIDTH



10190 MBC-500-3-325
 FOR OPERATION ON FLAT RAIL
 WITH 3.25" [82.6] FLANGE WIDTH
 OR SPECIAL FLAT TRACK WITH
 3.33" [84.6] FLANGE WIDTH

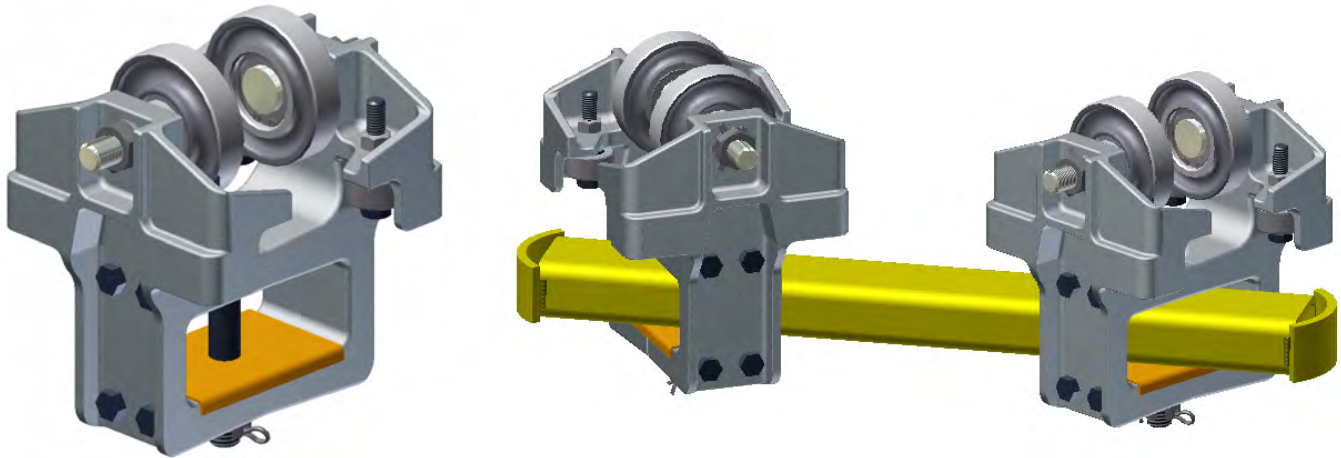


COMMON SIDE VIEW



LIGHT DUTY BRIDGE CRANE

• ALL DIMENSIONS ARE REFERENCE ONLY

**Part Number**

- **10020** AC-500-2-325 for operation on 3.25" or 3.33" flange flat rail
- **10021** AC-500-2-333 for operation on or 3.33" flange 6" S-Beam
- **10030** AC-500-2-4 for operation on 2.66" flange 4" S-Beam

Application

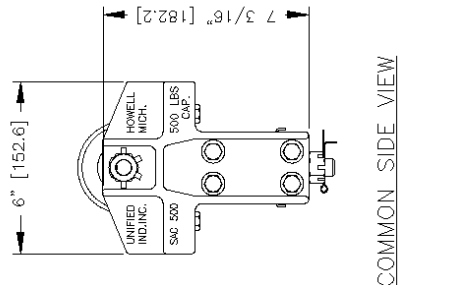
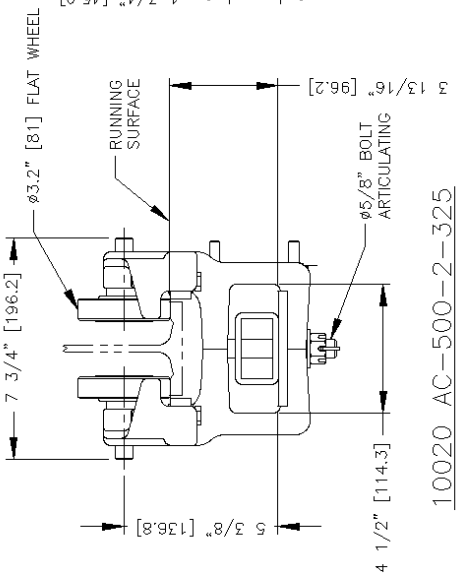
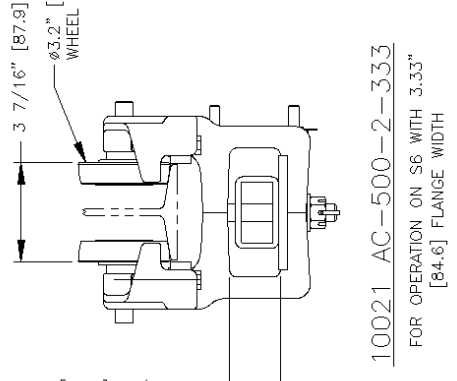
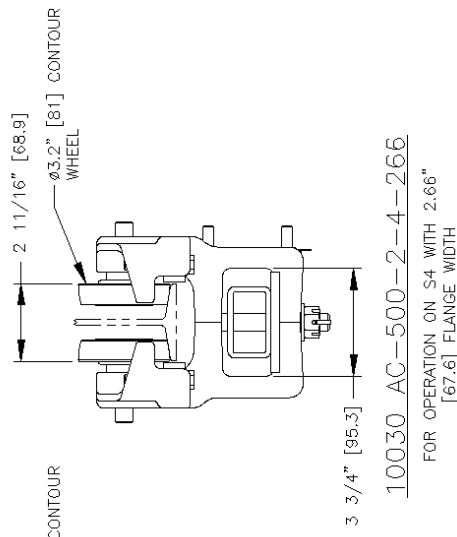
- Used in tandem as articulating load bars on horizontal curved monorail systems

Features

- High tensile almag alloy frames
- Integral built-in safety lugs
- Shielded side thrust roller protection
- Hardened ball bearing side thrust rollers
- Forged wheels 3.2" diameter flat or contoured induction hardened with permanently sealed precision ball bearings
- Load bearing brass wear plate
- Heat treated steel pivot bolt

Options

- Standard conveyor wheels 3.2" diameter flat or contoured with lubricated ball bearings
- Can be furnished as an assembled end truck or load bar



COMMON SIDE VIEW

10020 AC-500-2-325
 FOR OPERATION ON 3.25" [82.6] FLAT
 FLANGE RAIL & 3.33" [84.6] SPECIAL
 FLAT FLANGE RAIL

10021 AC-500-2-333
 FOR OPERATION ON S6 WITH 3.33"
 [84.6] FLANGE WIDTH

10030 AC-500-2-4-256
 FOR OPERATION ON S4 WITH 2.66"
 [67.6] FLANGE WIDTH

• ALL DIMENSIONS ARE REFERENCE ONLY

APPLICATIONS FOR AC-500
 ARTICULATING CARRIER HEAD TROLLEYS

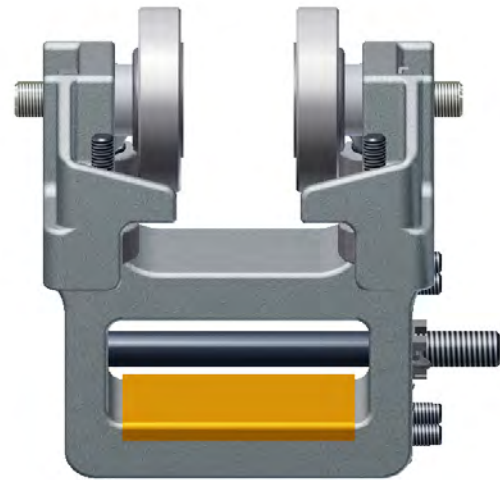
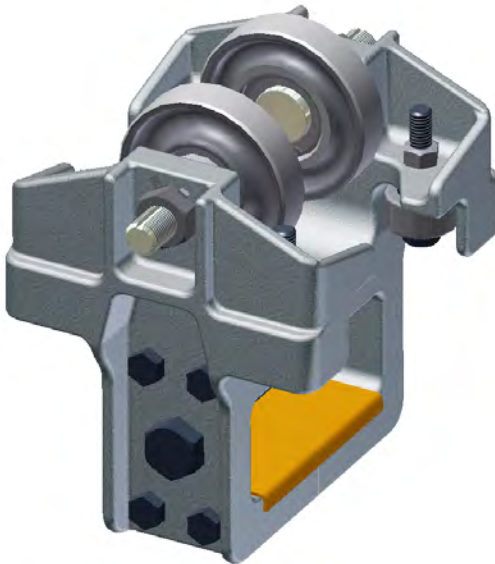
ASSEMBLES ON A MINIMUM 3FT. CURVED RUNWAY.
 USE IN PAIRS FOR LOAD BAR ASSEMBLIES ON
 3FT. MINIMUM CURVED MONORAIL.

TROLLEY SPECIFICATIONS

RATED LOAD: 500LBS. (224Kgs)
 WEIGHT: 10.5LBS. (4.70Kgs)
 BODY: HIGH TENSILE ALUMINUM
 WHEELS: ϕ 3.2" [82.6]
 STUD: ϕ 5/8" [16]
 ROLLERS: BALL THRUST BEARINGS

NOTES:

ALL AC-500 TROLLEYS COME WITH A BRASS WEAR
 PLATE.
 WHEN ORDERING PLEASE SPECIFY WIDTH OF RUNNING
 SURFACE FLANGE.
 (1) 3.25" [82.6] FOR STD. & SPECIAL FLAT RAIL.
 (2) 2.66" [67.6] FOR S4 BEAM
 (3) 3.33" [84.6] FOR S6 BEAM
 AVAILABLE WITH FLAT OR CONTOUR WHEELS.

**Part Number**

- **10230** SAC-500-2 for operation on 3.25" or 3.33" flange flat rail or
- **10231** SAC-500-2-4 for operation on 3.33" flange 6" S-Beam
- **10240** SAC-500-2-4 for operation on 2.66" flange 4" S-Beam

Application

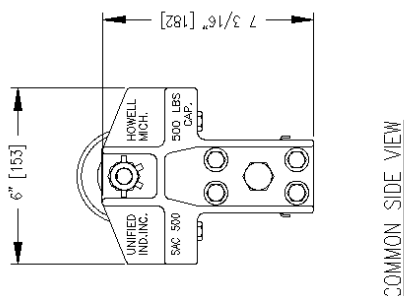
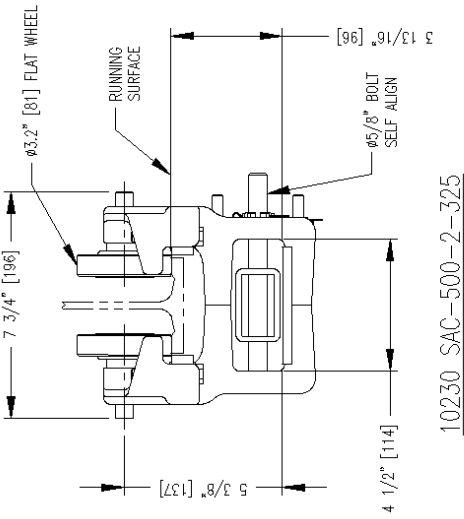
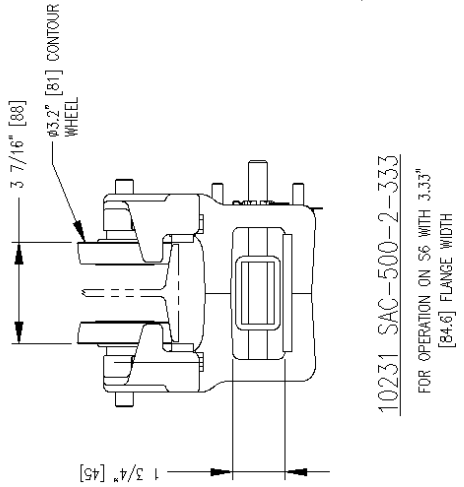
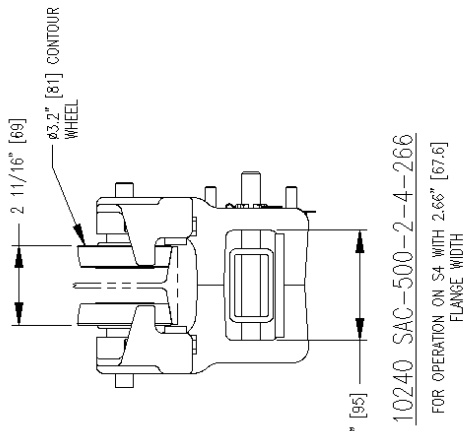
- Used in pairs for bridge crane end trucks where gage of span is not parallel

Features

- High tensile almag alloy frames
- Integral built in safety lugs
- Shielded side thrust roller protection
- Hardened ball bearing side thrust rollers
- Forged wheels 3.2" diameter flat or contoured induction hardened with permanently sealed precision ball bearings
- Load bearing brass wear plate
- Hardened steel self aligning bolt
- Trolley is designed to seek center of runway rail

Options

- Standard conveyor wheels 3.2" diameter flat or contoured with lubricated ball bearings
- Can be furnished as an assembled end truck



• ALL DIMENSIONS ARE REFERENCE ONLY

APPLICATIONS FOR SAC-500 TROLLEYS

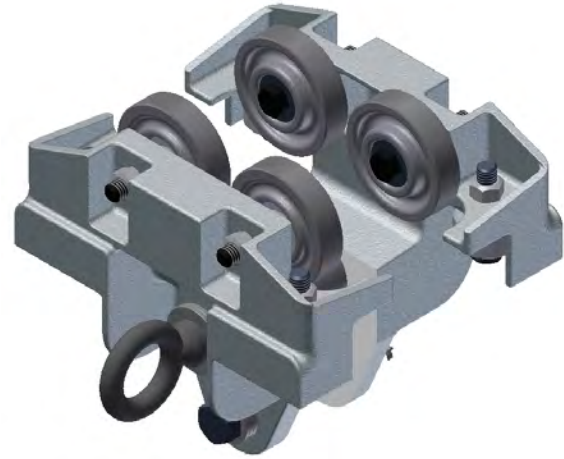
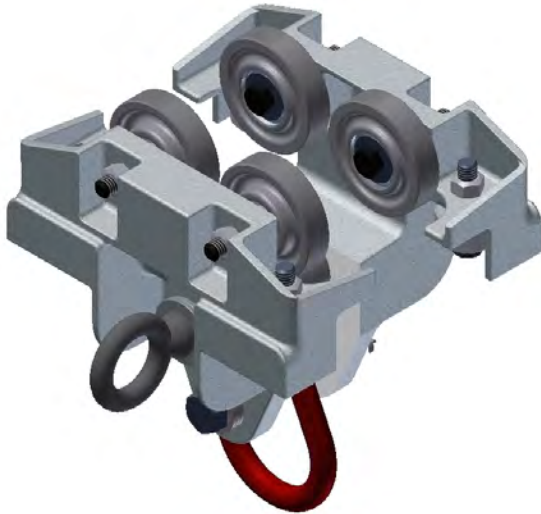
USE IN PAIRS FOR BRIDGE CRANE END TRUCK

TROLLEY SPECIFICATIONS

RATED LOAD: 500LBS. (224Kgs)
WEIGHT: 10.5LBS. (4.70Kgs)
BODY: HIGH TENSILE ALMAG
WHEELS: ϕ 3.2" [82.6]
STUD: ϕ 5/8" [16]
ROLLERS: BALL THRUST BEARINGS

NOTES:

ALL SAC-500 TROLLEYS COME WITH A BRASS WEAR PLATE.
WHEN ORDERING PLEASE SPECIFY WIDTH OF RUNNING SURFACE FLANGE.
(1) 3.25" [82.6] FOR STD. & SPECIAL FLAT RAIL.
(2) 2.66" [67.6] FOR S4 BEAM
(3) 3.33" [84.6] FOR S6 BEAM
AVAILABLE WITH FLAT OR CONTOUR WHEELS.

**Part Number**

- **10350** UT-500-LL-325 For operation on 3.25"/3.33" flange flat rail
- **10351** UT-500-LL-333 For operation on 3.33" flange 6" S-Beam
- **10352** UT-500-LL-266 For operation on 2.66" flange 4" S-Beam
- **10353** UT-500-S-325 For operation on 3.25"/3.33" flange flat rail
- **10354** UT-500-S-333 For operation on 3.33" flange 6" S-Beam
- **10355** UT-500-S-266 For operation on 2.66" flange 4" S-Beam

Application

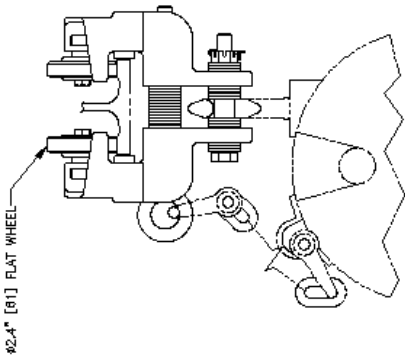
- Suspension of hook mounted spring balancers, hoists, nut runners, rivet guns, hand tools, fixtures, etc.
- Used in pairs for load bars

Features

- High tensile almag alloy frames
- Integral built in safety lugs
- Shielded side thrust roller protection
- Safety eye bolt penetrates through both almag trolley frames
- Independent load bearing bolt
- Forged 2.3" diameter wheels flat or contoured induction hardened with permanently sealed precision ball bearings
- Hardened ball bearing side thrust rollers
- Minimum track radius is 18"
- Fully adjustable with stored spacers to allow for adjustment to the rail sizes at left

Options

- UT-500-S with spool and no load link
- UT-500-LL with load link
- Standard conveyor wheel 2.3" diameter flat or contoured with lubricated ball bearings



62.4" [61] FLAT WHEEL

10353 UT-500-S-325

FOR OPERATION ON FLAT RAIL WITH A 3.25" [82.6] FLANGE WIDTH. HOOK MOUNTED BALANCER SHOWN

TROLLEY SPECIFICATIONS:

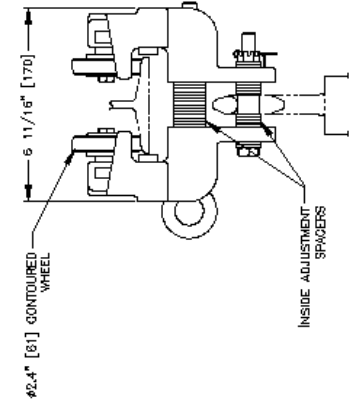
RATED LOAD: 500 LBS (224 Kgs)
 HEIGHT TO TOP OF WHEEL: 18.5" [468]
 BODY HEIGHT TORSION POINT: 18.5" [468]
 WHEELS: 62.4" [61] DIA. FLAT OR CONTOUR.
 STUCC: 83/8" [82] DIA.
 THRUST ROLLERS: BALL THRUST BEARING
 HARDENED AND GROUND

NOTE:
 WHEN ORDERING SPECIFY EXACT WIDTH OF RUNNING SURFACE FLANGE

(1) 2.86" [72.6] FOR S4 BEAM
 (2) 3.33" [84.6] FOR S6 BEAM
 (3) 3.25" [82.6] FOR FLAT RAIL
 EASY WAY CURVED RAIL MINIMUM RADIUS OF 18" [457]
 HARDWAY CURVED RAIL MINIMUM RADIUS OF 36" [914]

OPTIONAL USES:

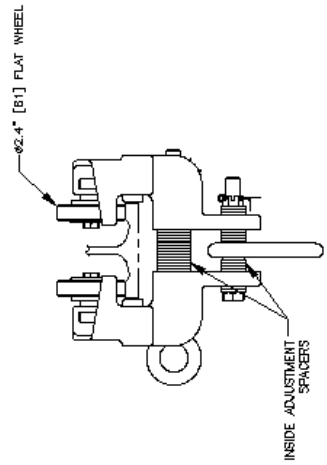
(1) USED IN TANDEN WITH A LOAD BAR TO MAX. LOAD OF 1000 LBS (448 Kgs)
 (2) USED FOR BRIDGE CRANE END TRUCKS
 (3) USED FOR HOOK MOUNTED DEVICES. SAFETY CHAINS AND SHACKLES CAN BE ORDERED FOR HOOK MOUNTED DEVICES



62.4" [61] CONTOURED WHEEL

10354 UT-500-S-333

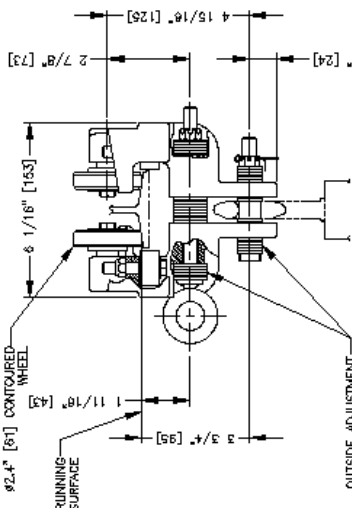
FOR OPERATION ON S8 BEAM WITH A FLANGE WIDTH OF 3.33" [84.6]



62.4" [61] FLAT WHEEL

10350 UT-500-LL-325

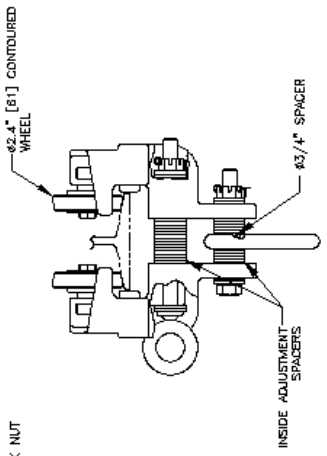
FOR OPERATION ON FLAT RAIL WITH A 3.25" [82.6] FLANGE WIDTH.



62.4" [61] CONTOURED WHEEL

10355 UT-500-S-266

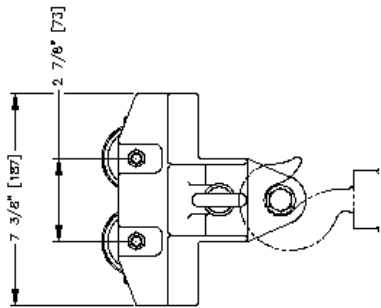
FOR OPERATION ON S4 BEAM WITH 2.66" [67.6] FLANGE WIDTH



62.4" [61] CONTOURED WHEEL

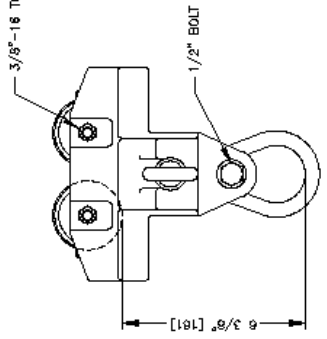
10351 UT-500-LL-333

FOR OPERATION ON S6 BEAM WITH A FLANGE WIDTH OF 3.33" [84.6]



7 3/8" [187]

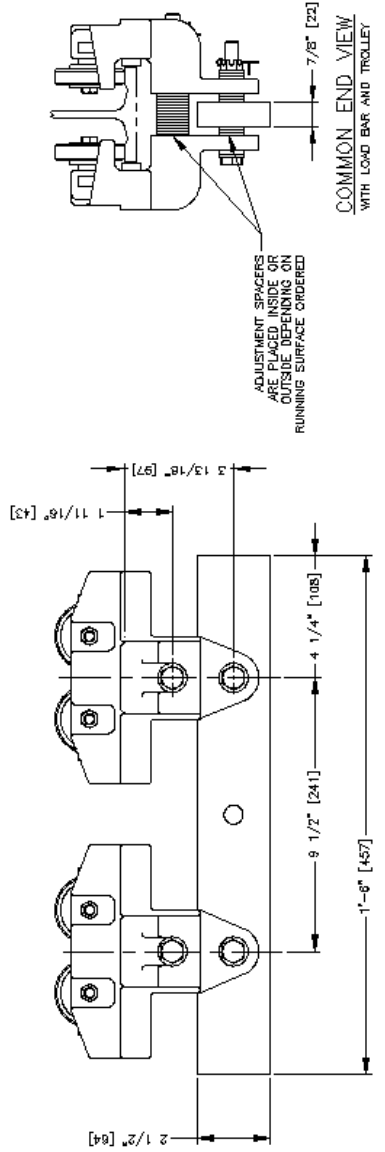
UT-500-S TROLLEYS



3/8"-16 TOP LOCK NUT

1/2" BOLT

UT-500-LL TROLLEYS



COMMON SIDE VIEW

COMMON END VIEW

WITH LOAD BAR AND TROLLEY

ALL DIMENSIONS ARE REFERENCE ONLY

**Part Number**

- **10339** UT-1000-S-325 for operation on 3.25"/3.33" flange flat track with brass wheels
- **10340** UT-1000-LL-325 for operation on 3.25"/3.33" flange flat track
- **10341** UT-1000-LL-333 for operation on 3.33" flange 6" S-Beam
- **10342** UT-1000-LL-266 for operation on 2.66" flange 4" S-Beam
- **10343** UT-1000-S-325 for operation on 3.25"/3.33" flange flat track
- **10344** UT-1000-S-333 for operation on 3.33" flange 6" S-Beam
- **10345** UT-1000-S-266 for operation on 2.66" flange 4" S-Beam
- **10346** UT-1000-YBC-325 for operation on 3.25"/3.33" flange flat track
- **10347** UT-1000-YBC-333 for operation on 3.33" flange 6" S-Beam
- **10348** UT-1000-YBC-266 for operation on 2.66" flange 4" S-Beam

Application

- Suspension of weld gun balancers, hoists, nut runners, rivet guns, hand tools, fixtures, etc.
- Used in pairs for load bars

Features

- High tensile almag alloy frames
- Built-in safety lugs, Integral in almag frames
- Shielded side guide rollers
- Safety eye bolt penetrates through both almag trolley frames
- Independent load bearing bolt
- Forged 3.2" diameter wheels flat or contoured induction hardened with permanently sealed precision ball bearings
- Hardened and ground ball bearing side guide rollers
- Minimum track radius is 24"
- Fully adjustable with stored spacers to allow for adjustment to the rail sizes at left

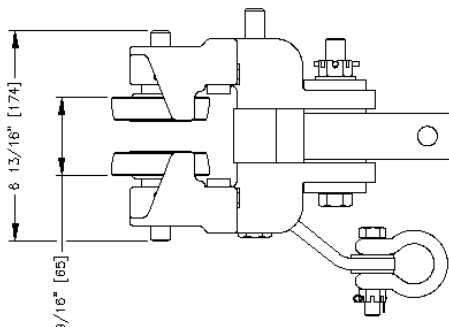
Options

- UT-1000-YB dielectrically insulated yoke block, safety strap and shackle
- UT-1000-LL non-insulated with forged through eyebolt, spool and load link
- UT-1000-S non-insulated with spool
- 3.2" dia. flat or contour load wheel
- Lubricated hardened and ground steel wheel (standard)
- Permanently lubricated forged steel wheels induction hardened

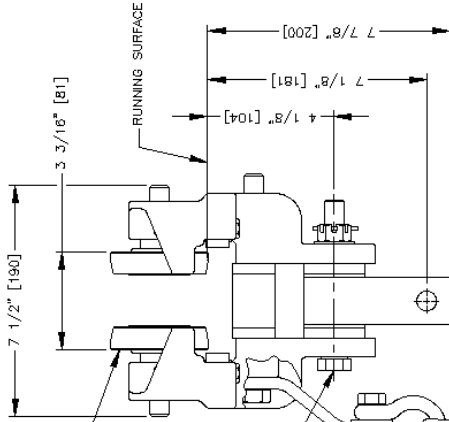
TROLLEY SPECIFICATIONS
 RATED LOAD: 1,000 LBS (448 Kgs)
 WEIGHT: 18 LBS (8.1 Kg) TO 18.5 LBS (8.3 Kgs)
 BODY: HIGH TENSILE ALMAG.
 WHEELS: $\phi 3.2"$ [81.3] WITH A $\phi 5/8"$ STUD
 THRUST ROLLERS: BALL BEARING HARDENED
 AND GROUND

OPTION:
 SAFETY CHAIN CONSISTING OF TWO REPAIR LINKS
 AND FIVE LINKS OF $3/8"$ TRIPLE "B" CHAIN

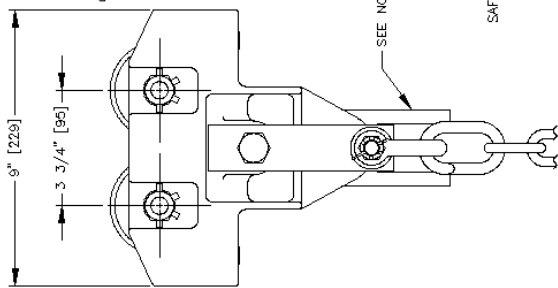
NOTE:
 UT-1000-YBC TROLLEY $5/8"$ DIA. GRADE 5 BOLT
 SUPPLIED UPON REQUEST FOR HOOK OR YOKE
 MOUNTED EQUIPMENT.
 UT-1000-LL TROLLEY $5/8"$ DIA. LOAD LINK FOR
 HOOK MOUNTED EQUIPMENT.
 UT-1000-S TROLLEY $7/8"$ DIA. SPOOL FOR HOOK
 MOUNTED EQUIPMENT.
 NON-INSULATED UT-1000-LL OR UT-1000-S
 INSULATED UT-1000-YB
 WHEN ORDERING SPECIFY WIDTH OF RUNNING
 SURFACE-FLANGE
 (1) $3.25"$ [82.6] FOR S4 BEAM
 (2) $3.33"$ [84.6] FOR S6 BEAM
 (3) $2.66"$ [67.6] FOR S4 BEAM



10348 UT-1000-YBC-266
 FOR S4 BEAM WITH
 $2.66"$ [67.6] FLANGE WIDTH

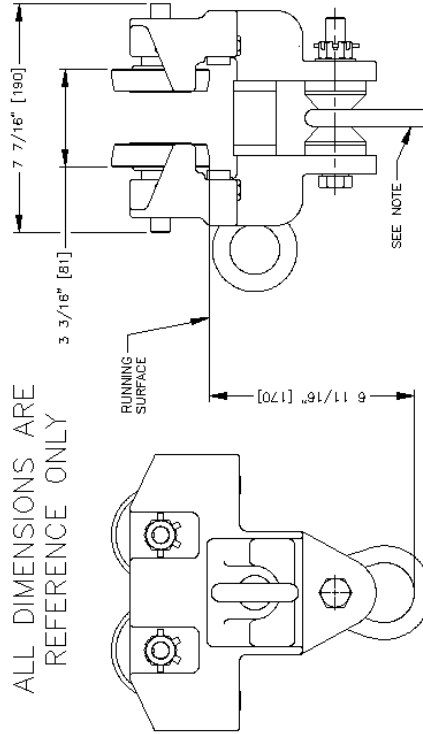


10347 UT-1000-YBC-333
 FOR S6 BEAM WITH
 $3.33"$ [84.6] FLANGE WIDTH

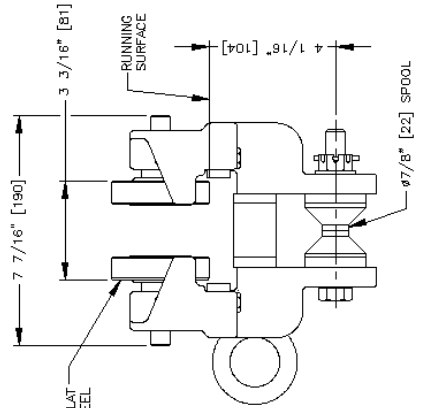


10341 UT-1000-LL-333
 FOR S6 BEAM WITH
 $3.33"$ [84.6] FLANGE WIDTH

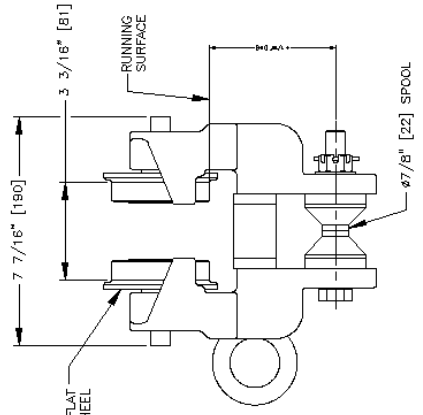
ALL DIMENSIONS ARE
 REFERENCE ONLY



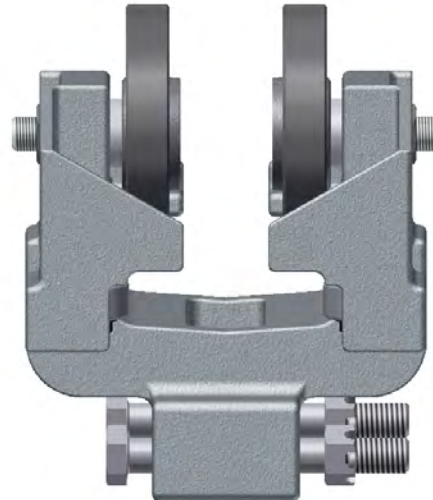
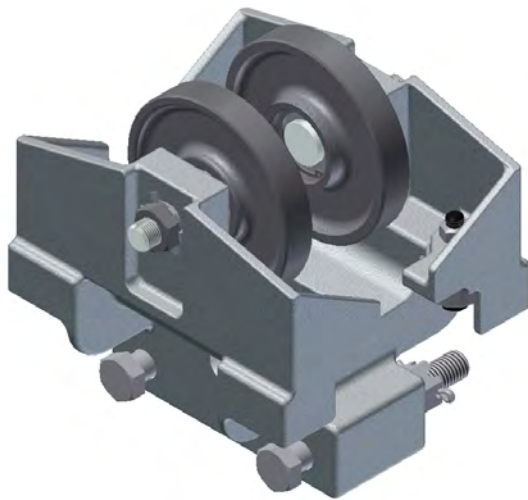
10343 UT-1000-S-325
 FOR FLAT RAIL WITH
 $3.25"$ [82.6] FLANGE WIDTH



10339 UT-1000-S-325
 WITH BRASS WHEELS FOR
 FLAT RAIL WITH $3.25"$ [82.6]
 FLANGE WIDTH



10344 UT-1000-S-325
 WITH BRASS WHEELS FOR
 FLAT RAIL WITH $3.25"$ [82.6]
 FLANGE WIDTH



Part Number

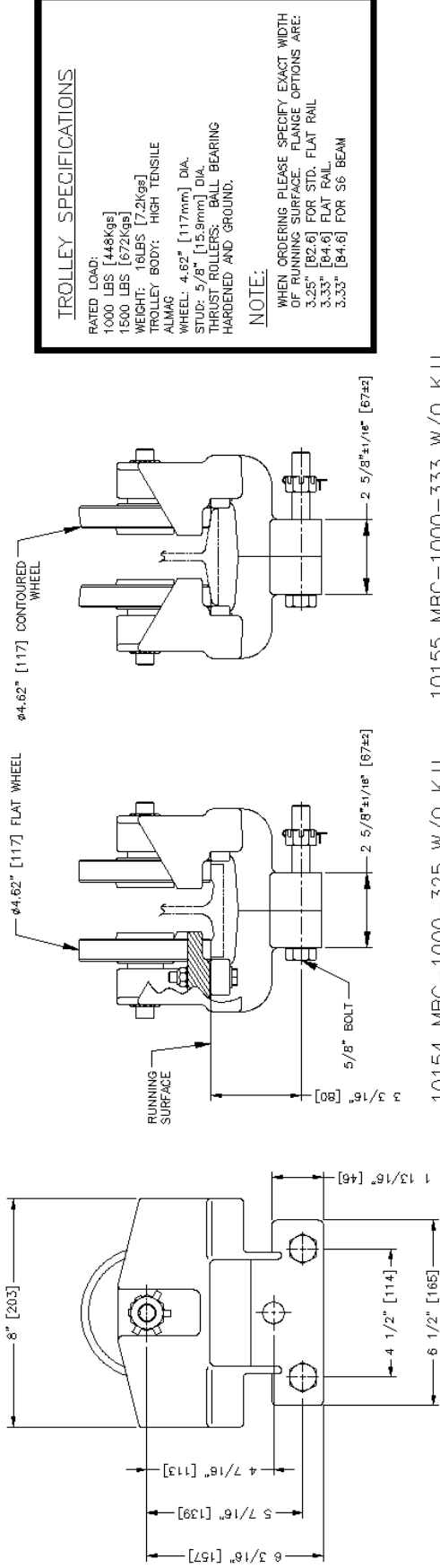
- **10154** MBC-1000-3-325 without kickup wheels for operation on 3.25"/3.33" flange flat rail. 1000 lb. Rated Load
- **10155** MBC-1000-3-333 without kickup wheels for operation on 3.33" flange 6" S-Beam. 1000 lb. Rated Load
- **10156** MBC-1500-3-325 without kickup wheels for operation on 3.25"/3.33" flange flat rail. 1500 lb. Rated Load
- **10157** MBC-1500-3-333 without kickup wheels for operation on 3.33" flange 6" S-Beam. 1500 lb. Rated Load

Application

- Used in pairs for bridge crane end truck assemblies and load bars

Features

- Built-in safety lugs, integral in almag frames
- High tensile almag alloy frames
- 4.62" diameter drop forged steel load wheels with low friction sealed bearings permanently lubricated
- Hardened and ground ball bearing side thrust rollers



TROLLEY SPECIFICATIONS

RATED LOAD:
 1000 LBS [448Kgs]
 1500 LBS [672Kgs]

WEIGHT: 16 LBS [7.2Kgs]

TROLLEY BODY: HIGH TENSILE ALUMINUM

WHEEL: 4.62" [117mm] DIA.
 STUD: 5/8" [15.8mm] DIA.
 THRUST ROLLERS: BALL BEARING HARDENED AND GROUND.

NOTE:
 WHEN ORDERING PLEASE SPECIFY EXACT WIDTH OF RUNNING SURFACE. FLANGE OPTIONS ARE:
 3.25" [82.6] FOR STD. FLAT RAIL
 3.33" [84.6] FLAT RAIL
 3.33" [84.6] FOR S6 BEAM

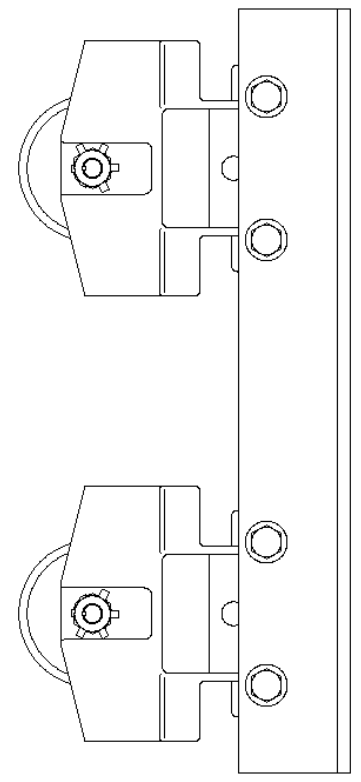
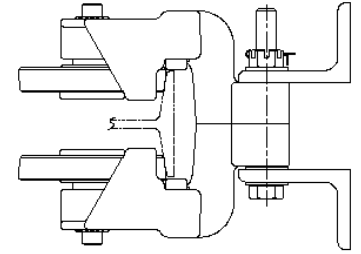
10155. MBC-1000-333. W/O K.U.

TWO WHEEL TROLLEY WITHOUT COUNTER THRUST WHEEL FOR OPERATION ON S6 BEAM WITH 3.33 [84.6] FLANGE WIDTH. SPECIFY 1000LBS [448Kgs] OR 1500LBS [672Kgs] (10157)

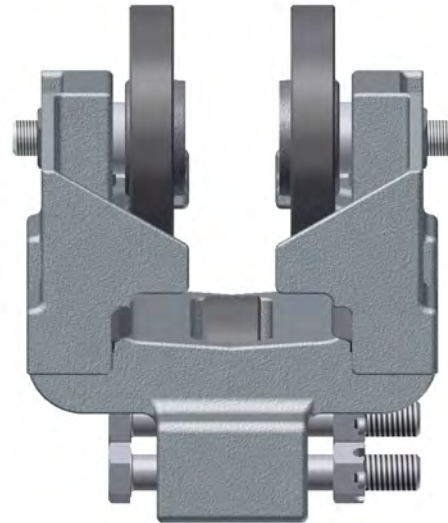
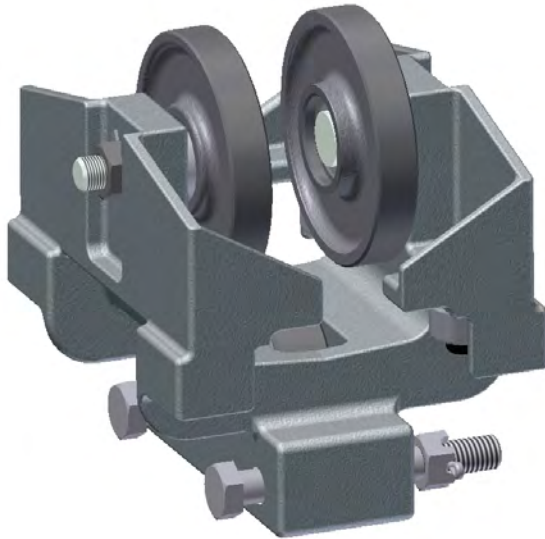
10154. MBC-1000-325. W/O K.U.

TWO WHEEL TROLLEY WITHOUT COUNTER THRUST WHEEL FOR OPERATION ON FLAT RAIL WITH 3.25 [82.6] OR 3.33 [84.6] FLANGE WIDTH. SPECIFY 1000LBS [448Kgs] OR 1500LBS [672Kgs] (10156)

• ALL DIMENSIONS ARE REFERENCE ONLY



BRIDGE CRANE END TRUCK ASSEMBLY
 COMPLETE WITH SAFETY LUGS. AVAILABLE IN VARIOUS LENGTHS USED ON UNIFIED BRIDGE CRANES

**Part Number**

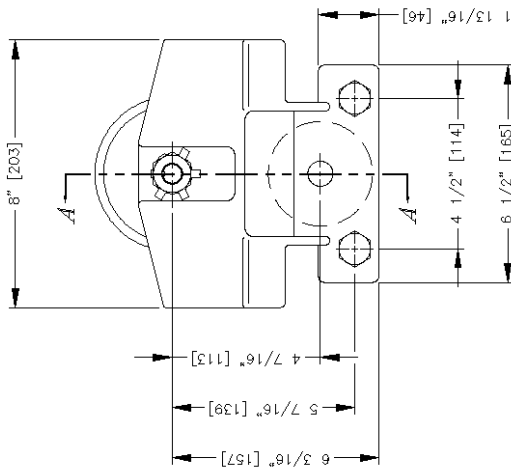
- **10150** MBC-1000-3-325 with kickup wheels for operation on 3.25"/3.33" flange flat rail. 1000 lb. Rated Load
- **10151** MBC-1000-3-333 with kickup wheels for operation on 3.33" flange 6" S-Beam. 1000 lb. Rated Load
- **10152** MBC-1500-3-325 with kickup wheels for operation on 3.25"/3.33" flange flat rail. 1500 lb. Rated Load
- **10153** MBC-1500-3-333 with kickup wheels for operation on 3.33" flange 6" S-Beam. 1500 lb. Rated Load

Application

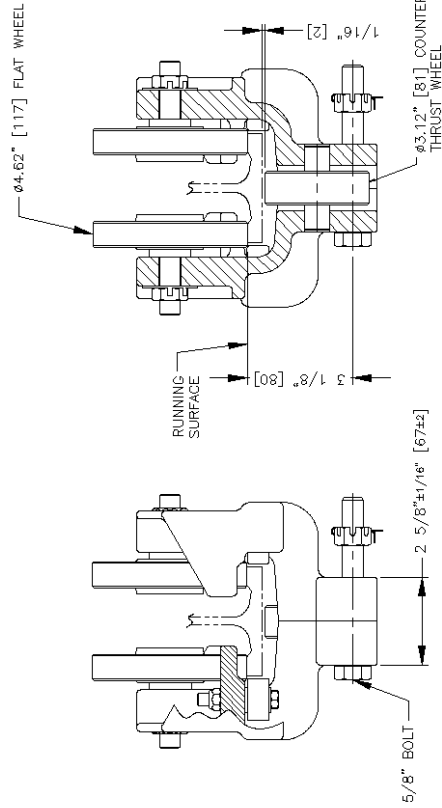
- Used in pairs on one or both end truck assemblies of medium or standard bridge cranes with overhanging bridge beam
- Can be adapted for tools or fixtures where a "kick-up" rolling action is required

Features

- Built-in safety lugs, integral in frames
- High tensile almag alloy frames
- 4.62" diameter drop forged steel load wheels with low friction sealed bearings permanently lubricated
- Third wheel acts as a counter thrust to avoid kick-up when load is extended beyond normal bridge span. This will allow movement of bridge with suspended load
- Hardened and ground ball bearing side thrust rollers



COMMON SIDE VIEW



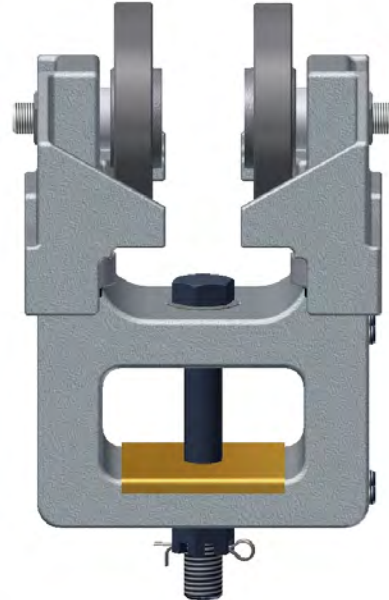
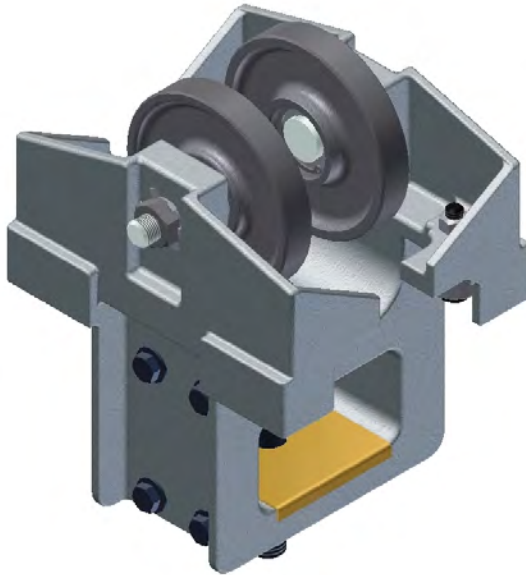
10150 MBC-1000-325
TWO WHEEL TROLLEY WITH COUNTER
THRUST WHEEL FOR OPERATION ON FLAT
RAIL WITH 3.25" [82.6] OR 3.33" [84.6]
FLANGE WIDTH. SPECIFY 1000LBS [448Kgs]
OR 1500LBS [672Kgs] (10152)

SECTION A-A

10151 MBC-1000-333
TWO WHEEL TROLLEY WITH COUNTER THRUST
WHEEL FOR OPERATION ON S6 BEAM
WITH 3.33" [84.6] FLANGE WIDTH.
SPECIFY 1000LBS [448Kgs]
OR 1500LBS [672Kgs] (10152)

● ALL DIMENSIONS ARE REFERENCE ONLY

TROLLEY SPECIFICATIONS		NOTE:
RATED LOAD:	1000 LBS [448Kgs] 1500 LBS [672Kgs]	WHEN ORDERING PLEASE SPECIFY EXACT WIDTH OF RUNNING SURFACE. FLANGE OPTIONS ARE: 3.25" [82.6] FOR STD. FLAT RAIL & 3.33" [84.6] FLAT RAIL. 3.33" [84.6] FOR S6 BEAM
WEIGHT:	16LBS [7.2Kgs]	
TROLLEY BODY:	HIGH TENSILE ALMAG	
WHEEL:	4.62" [117mm] DIA.	
STUD:	5/8" [15.9mm] DIA.	
THRUST ROLLERS:	BALL BEARING HARDENED AND GROUND.	



Part Number

- **10010** AC-1027-325 for operation on 3.25"/3.33" flange flat rail. 1000 lb. Rated Load
- **10011** AC-1027-333 for operation on 3.33" flange 6" S-Beam. 1000 lb. Rated Load
- **10012** AC-1027-325D for operation on 3.25"/3.33" flange flat rail. 1500 lb. Rated Load
- **10013** AC-1027-333D for operation on 3.33" flange 6" S-Beam. 1500 lb. Rated Load

Application

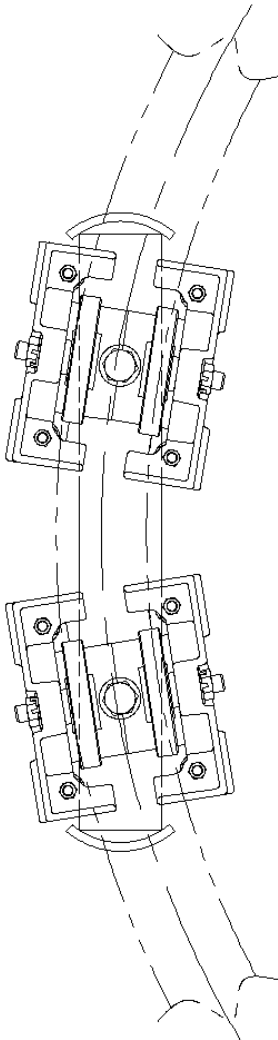
- Load bars for curved monorail, minimum 3 foot radius

Features

- High tensile almag alloy frames
- Built-in safety lugs, integral in almag frames
- 4.62" diameter drop forged steel load wheels with low friction sealed bearings permanently lubricated
- Hardened and ground ball bearing side thrust rollers
- Steel pivot pin (centralized to permit rotation around its axis)
- Brass wear plate

Options

- Dual bearing for greater rated loads up to 1500 pounds designated by the D at the end of the description

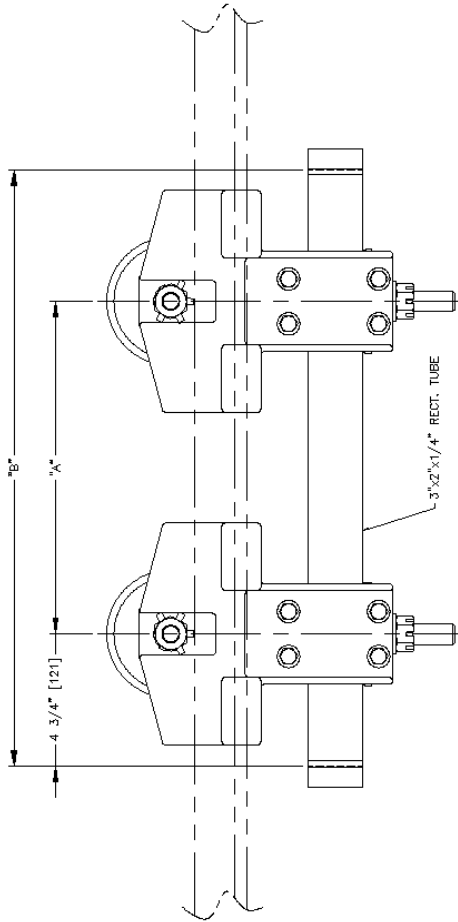


TROLLEY SPECIFICATIONS

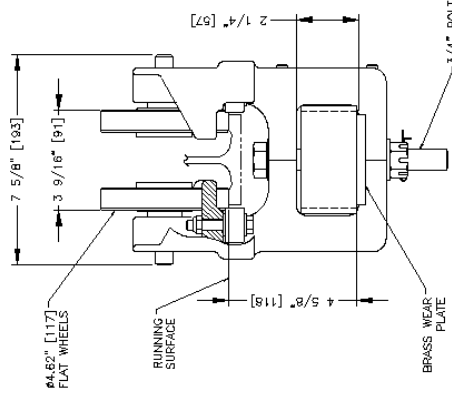
RATED LOAD:
 1000 LBS (446 kg)
 1800 LBS (812 kg)
 WEIGHT: 16.5 LBS (6.3 kg)
 WHEEL: HIGH TENSILE ALUMG
 4.82" [117.3] DIA.
 4.50" [114.3] DIA. FLANGED
 5/8" [15.9] DIA. STUD
 SIDE THRUST ROLLERS: BALL BEARING
 (AS REQ'D)
NOTE:
 WHEN ORDERING SPECIFY EXACT WIDTH OF
 RUNNING SURFACE FLANGE:
 3.25" [82.6] FOR FLAT RAIL
 3.33" [84.6] FOR S6 BEAM
 SPECIFY 1000 LBS OR 1500 LBS
 RATED LOAD.

CURVED RAIL RADIUS	"A" WHEEL BASE	"B" OVERALL
3'-0" [914]	12" [304]	22" [558]
4'-0" [1219]	18" [457]	28" [711]
5'-0" [1524]	24" [609]	34" [863]
6'-0" [1828]	30" [762]	40" [1016]
7'-0" [2133]	36" [914]	46" [1168]
8'-0" [2438]	42" [1066]	52" [1320]
9'-0" [2743]	48" [1219]	58" [1473]
10'-0" [3048]	54" [1371]	64" [1625]

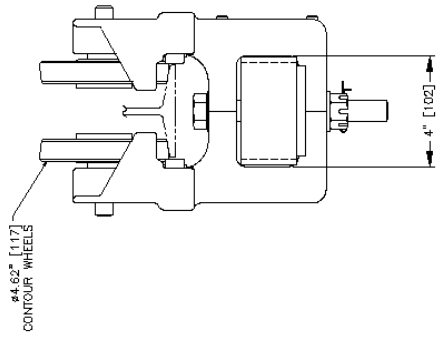
• ALL DIMENSIONS ARE REFERENCE ONLY



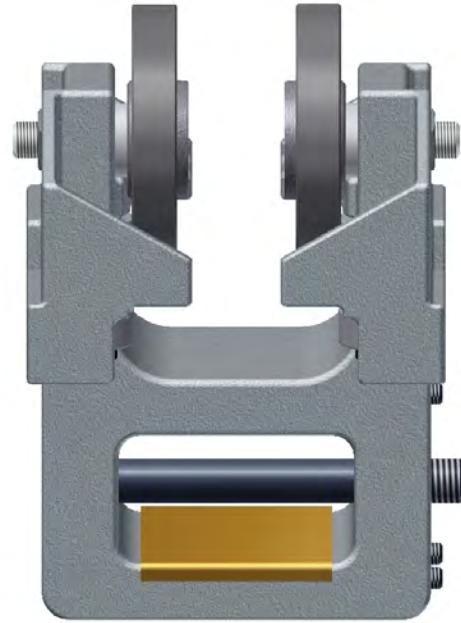
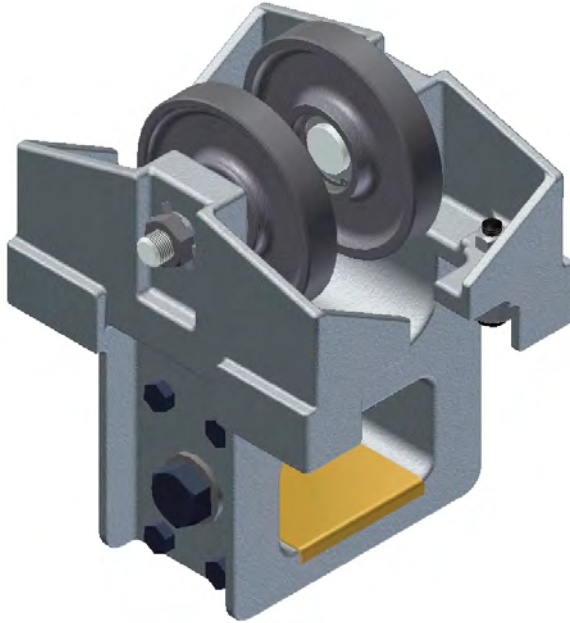
AC-1027 LOAD BAR ASSEMBLY
 COMMON SIDE VIEW



10010 AC-1027-325
 FOR OPERATION ON STD.
 FLAT RAIL WITH 3.25" [82.6]
 FLANGE WIDTH.



10011 AC-1027-333
 FOR OPERATION ON S6 BEAM
 WITH 3.33" [84.6] FLANGE WIDTH.

**Part Number**

- **10220** SAC-1020-325 for operation on 3.25"/3.33" flange flat rail. 1000 lb. Rated Load
- **10221** SAC-1020-333 for operation on 3.33" flange 6" S-Beam. 1000 lb. Rated Load
- **10222** SAC-1020-325D for operation on 3.25"/3.33" flange flat rail. 1500 lb. Rated Load
- **10223** SAC-1020-333D for operation on 3.33" flange 6" S-Beam. 1500 lb. Rated Load

Applications

- Used in pairs for bridge crane end truck assemblies where runway spans are not parallel

Features

- High tensile almag alloy frames
- Built-in safety lugs, integral in frames
- 4.62" diameter drop forged steel load wheels with low friction sealed bearings permanently lubricated
- Hardened and ground ball bearing side thrust rollers
- Steel self-aligning pin
- Brass wear plate

Options

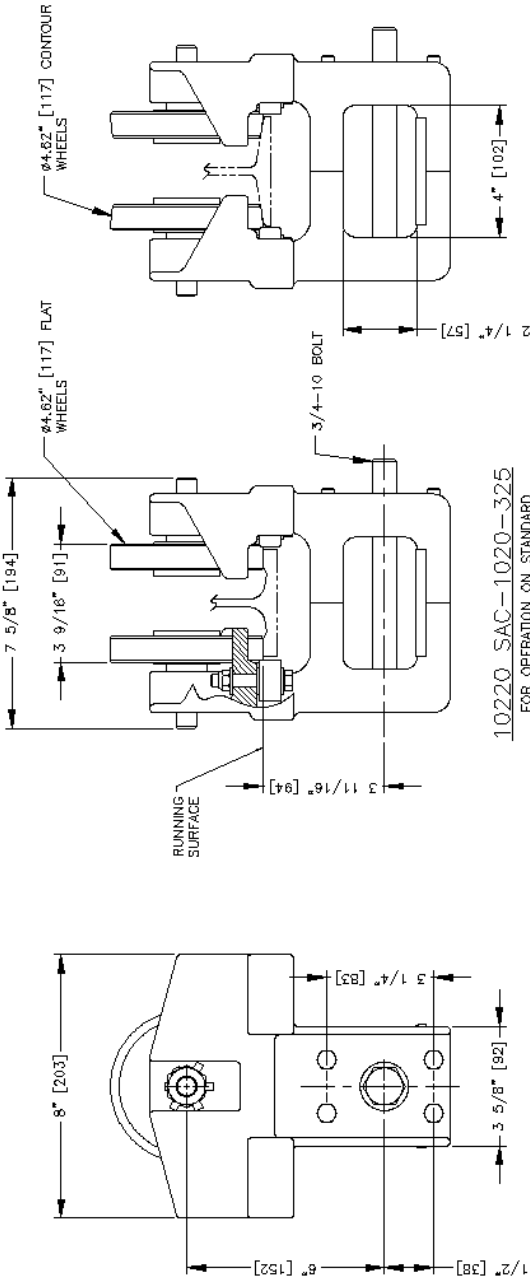
- Dual bearing for greater rated loads up to 1500 pounds designated by the D at the end of the description

TROLLEY SPECIFICATIONS

RATED LOAD:
 1000 LBS (448 Kgs)
 1500 LBS (672 Kgs)
 WEIGHT: 16.5 LBS (8.3 Kgs)
 BODY: HIGH TENSILE ALMAG
 WHEEL:
 4.62" [117.3] DIA.
 4.50" [114.3] DIA. FLANGED
 5/8" [15.9] DIA. STUD
 SIDE THRUST ROLLERS: BALL BEARING
 (AS REQ'D)

NOTE:
 WHEN ORDERING SPECIFY EXACT WIDTH OF
 RUNNING SURFACE FLANGE
 3.25" [82.6] FOR FLAT RAIL
 3.33" [84.6] FOR S6 BEAM
 SPECIFY 1000 LBS OR 1500 LBS
 RATED LOAD.

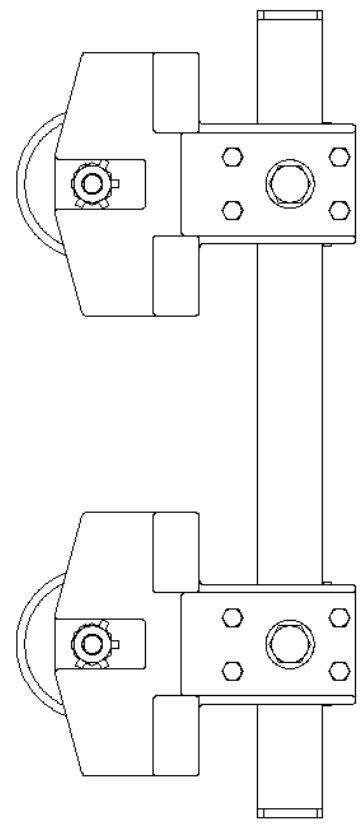
APPLICATION:
 PAIR UP FOR BRIDGE CRANE END TRUCK
 ASSEMBLIES IF RUNWAY SPAN IS NOT PARALLEL.



COMMON SIDE VIEW

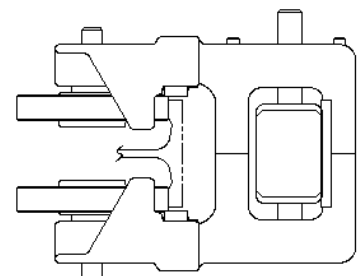
10220 SAC-1020-325
 FOR OPERATION ON STANDARD
 FLAT RAIL WITH 3.25" [82.6]
 FLANGE WIDTH.
 1000 LBS. RATED LOAD

10221 SAC-1020-333
 FOR OPERATION ON S6 BEAM
 WITH 3.33" [84.6] FLANGE WIDTH.
 1000 LBS. RATED LOAD

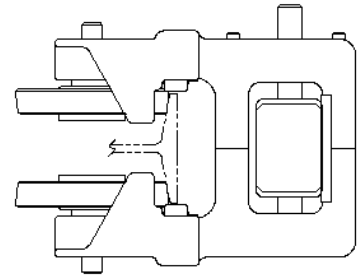


COMMON SIDE VIEW

SAC-1020 LOAD BAR ASSEMBLY
 AVAILABLE IN VARIOUS LENGTHS



10222 SAC-1020-325D
 FOR OPERATION ON STANDARD
 FLAT RAIL WITH 3.25" [82.6]
 FLANGE WIDTH.
 1500 LBS. RATED LOAD



10223 SAC-1020-333D
 FOR OPERATION ON S6 BEAM
 WITH 3.33" [84.6] FLANGE WIDTH.
 1500 LBS. RATED LOAD

• ALL DIMENSIONS ARE REFERENCE ONLY

**Part Number**

- **10040** BT-266 for operation on 2.66" flange 4" S-Beam
- **10041** BT-266-DHS for operation on 2.66" flange 4" S-Beam
- **10050** BT-325-DHS for operation on 3.25"/3.33" flange flat rail
- **10051** BT-325 for operation on 3.25"/3.33" flange flat rail
- **10052** BT-333 for operation on 3.33" flange 6" S-Beam
- **10053** BT-333-DHS for operation on 3.33" flange 6" S-Beam

Application

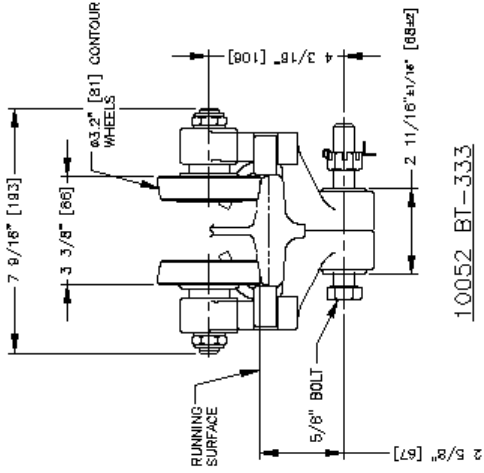
- For suspension of portable tools, welding guns, balancers, hoists, fixtures etc.
- Used in pairs for bridge crane end truck assemblies and load bars

Features

- Patented dual safety clevis
- 3.25" diameter load wheels
- High tensile almag alloy frames
- Hardened and ground ball bearing side thrust rollers
- Minimum track radius is 60 inches

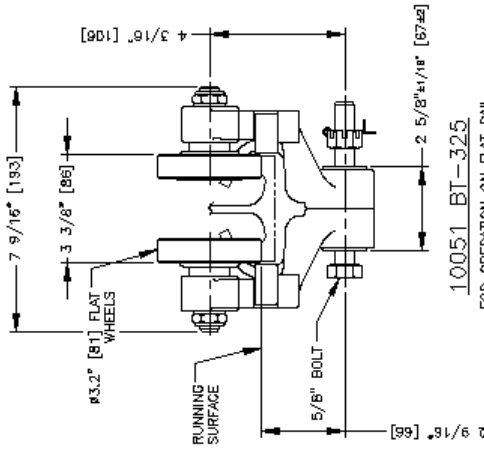
Options

- Available with or without forged eye bolt
- Available with or without dual hanging strap
- Flat or contoured "Conveyor" steel load wheels



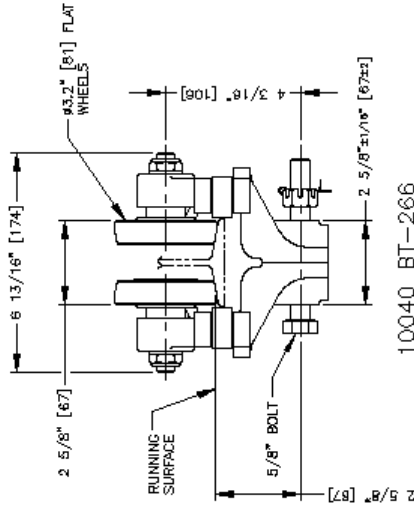
10052 BT-333

FOR OPERATION ON S6 BEAM
WITH 3.33\"[84.6] FLANGE WIDTH



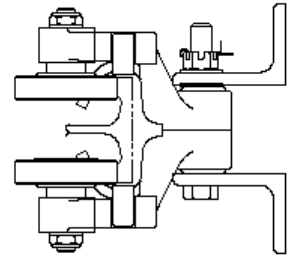
10051 BT-325

FOR OPERATION ON FLAT RAIL
WITH 3.25\"[82.6] FLANGE WIDTH

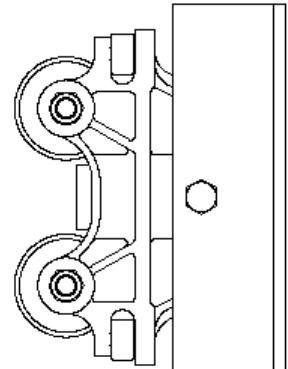


10040 BT-266

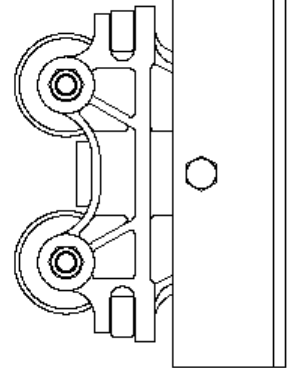
FOR OPERATION ON S4 BEAM
WITH 2.68\"[67.6] FLANGE WIDTH



OPTIONAL DUAL
HANGING STRAP
WITH ROD ENDS



COMMON SIDE VIEW



TROLLEY SPECIFICATIONS:

RATED LOAD: 2000 LBS (972 Kgs)
WEIGHT: 16 LBS (7.2 Kgs)
BODY: HIGH TENSILE ALMAG
WHEELS: 3.2\"[81.3] DIA.
STUDS: 5/8\"[12.7] DIA.
THRUST ROLLERS: BEARING
HARDENED & GROUND

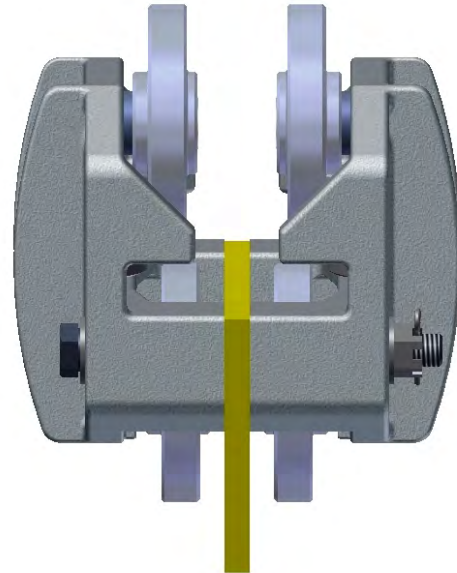
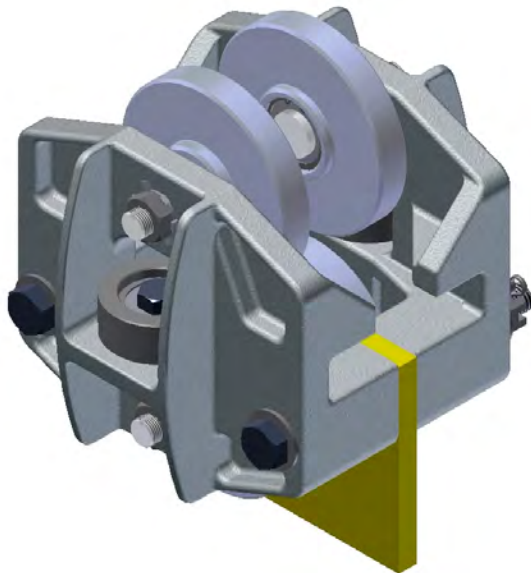
NOTES:
WHEN ORDERING SPECIFY EXACT WIDTH OF
RUNNING SURFACE FLANGE.
(1) 3.25\"[82.6] FOR FLAT RAIL
(2) 2.68\"[67.6] FOR S4 BEAM
(3) 3.33\"[84.6] FOR S6 BEAM
MINIMUM TRACK RADIUS 60\" [1524].

BRIDGE CRANE END TRUCK

AVAILABLE IN VARIOUS LENGTHS

•

ALL DIMENSIONS ARE REFERENCE ONLY



Model Number

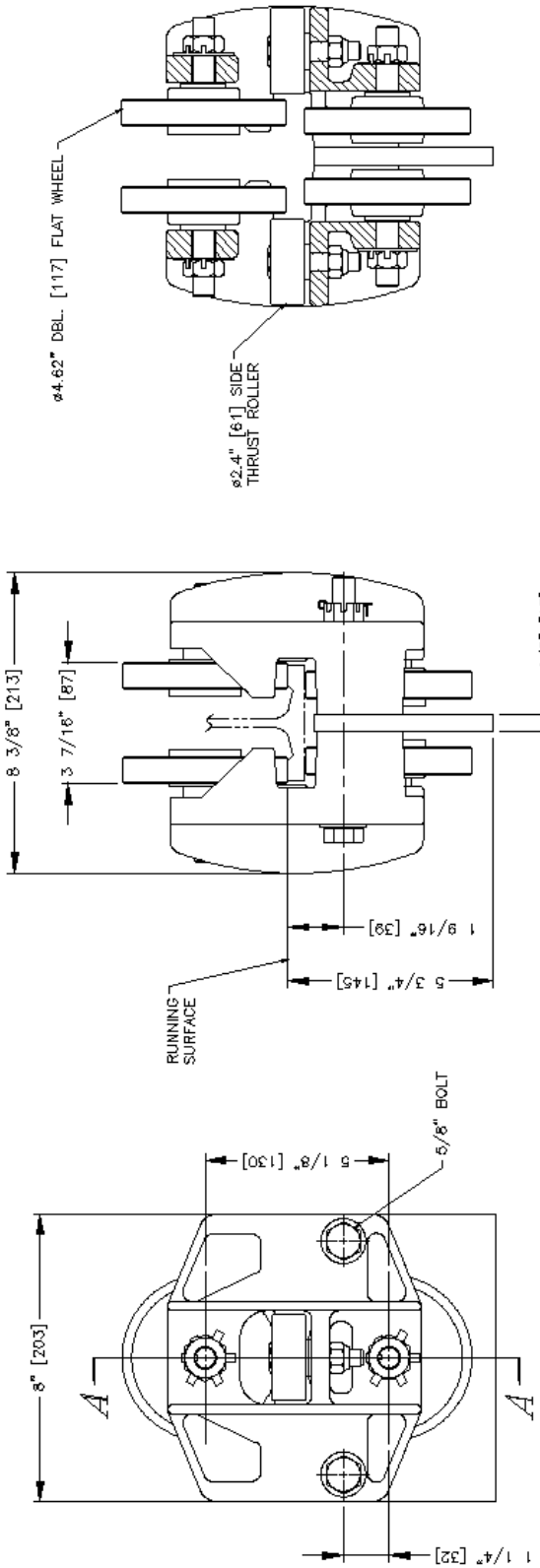
- **10310** TSE-1017-325 for operation on 3.25"/3.33" flange flat rail
- **10315** TSE-1017-333 for operation on 3.33" flange 6" S-Beam

Application

- Used in pairs on telescoping transfer beam extensions

Features

- High tensile almag alloy frames
- Built-in safety lugs integral in frames
- 4.62" diameter drop forged steel load and kick-up wheels with low friction sealed bearings permanently lubricated
- Large 2.40" diameter hardened and ground ball bearing side thrust rollers

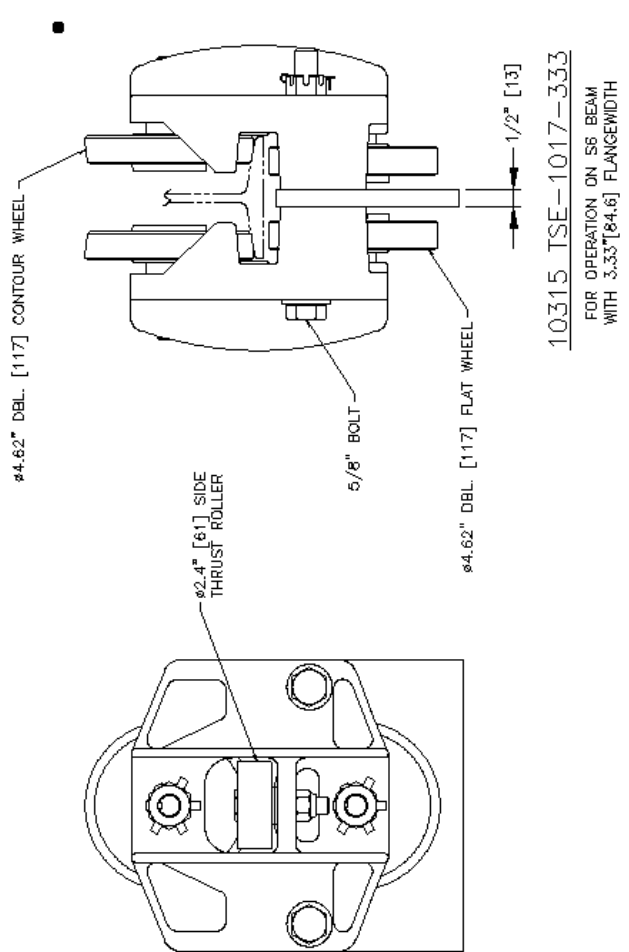


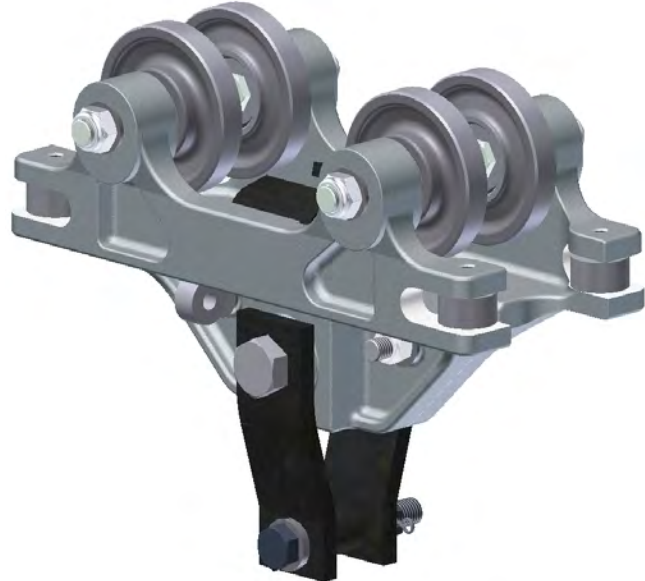
SECTION A-A

TROLLEY SPECIFICATIONS
 RATED LOAD: 2500 LBS. (1120 Kgs) WEIGHT:
 31 LBS. (14 Kgs)
 BODY: HIGH TENSILE ALUMAG
 WHEEL: 4. 5/8" [117] DIA.
 STUD: 5/8" [15.9] DIA.
 THRUST ROLLERS: 2.4 [61] DIA. BALL BEARING.

NOTE:
 WHEN ORDERING SPECIFY EXACT WIDTH
 OF RUNNING SURFACE FLANGE.
 1) 3.25 [82.6] FOR FLAT RAIL.
 2) 2.66 [67.6] FOR S4 BEAM
 3) 3.33 [84.6] FOR S6 BEAM

ALL DIMENSIONS ARE REFERENCE ONLY



**10060****10061****Model Number**

- **10060** BT-325-10 for operation on 3.25/3.33" flange flat rail
- **10061** BT-325-10-DHS for operation on 3.25/3.33" flange flat rail
- **10062** BT-333-10 for operation on 3.33" flange 6" S-Beam
- **10063** BT-333-10-DHS for operation on 3.33" flange 6" S-Beam

Application

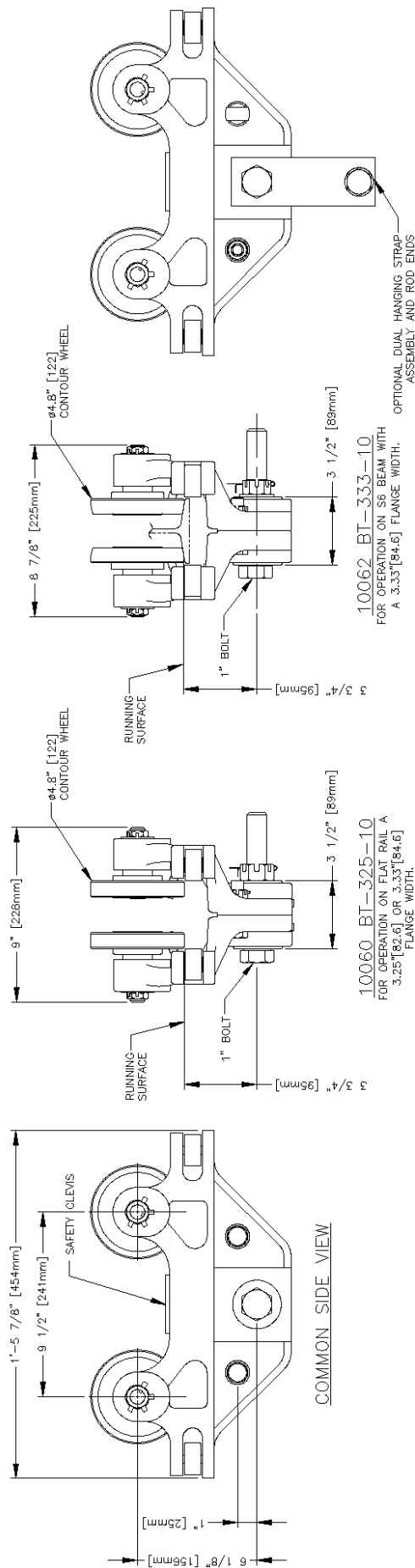
- Used in pairs for heavy load bridge crane end truck assemblies
- For suspension of portable tools, balancer, hoists, fixtures etc.
- For bridge beam trolley with optional dual hanging strap designated by DHS.

Features

- Patented dual safety clevis
- High tensile almag alloy frames
- 4.81" diameter heavy duty load wheels
- Hardened and ground ball bearing side thrust rollers
- Minimum track radius is 10'-0"

Options

- Available with dual hanging straps for suspension of heavy hook mounted loads. Rod ends come with dual hanging straps for safety cable.
- Available with universal swivel assembly



**BT-325-10 OR BT-333-10
TROLLEY SPECIFICATIONS:**

RATED LOAD: 4000 LBS (1814 Kg)
 WEIGHT: 50 LBS (22.4 Kg)
 BODY: HIGH TENSILE ALMAG WHEELS:
 4.8" [121.9] DIA.
 FLAT DR CONTOURED
 WHEEL STUD: 3/4" [19] DIA. GREASE
 FITTING OPTIONAL
 10"-0" MINIMUM RADIUS
 SIDE THRUST ROLLERS: BALL BEARING
 HARDENED & GROUND

NOTE:

WHEN ORDERING PLEASE SPECIFY EXACT WIDTH
 OF RUNNING SURFACE FLANGE:
 3.25" [82.6] FOR FLAT RAIL
 3.33" [84.6] FOR S6 BEAM

• ALL DIMENSIONS ARE REFERENCE ONLY

CAUTION

This bridge crane has a safe load rating, which has been clearly marked on both sides by the manufacturer. The total weight of the suspended load should never exceed 125% of this limit. The weight of all handling devices such as buckets, magnets, grabs, balancers, hoists, weldguns, etc. must be included as a part of the suspended load. The weight of such devices should therefore be determined and clearly marked.

Consideration should be given when installing hoisting devices. Load ratings for such devices may exceed the load rating of the bridge crane.

The operator should inspect this bridge crane for loose bolts and worn, cracked or distorted parts prior to use (inspection should include all handling devices and mounting equipment). Defective parts should be replaced with manufacturer-approved parts before use of bridge crane is resumed.

This bridge crane conforms to the safety standards of the U.S. Occupational Safety and Health Administration (OSHA). Any alteration of its structure or change in its rated load capacity may render null and void any manufacturer's warranties, expressed or implied.

***All dimensions are reference only
and need to be verified with factory.**



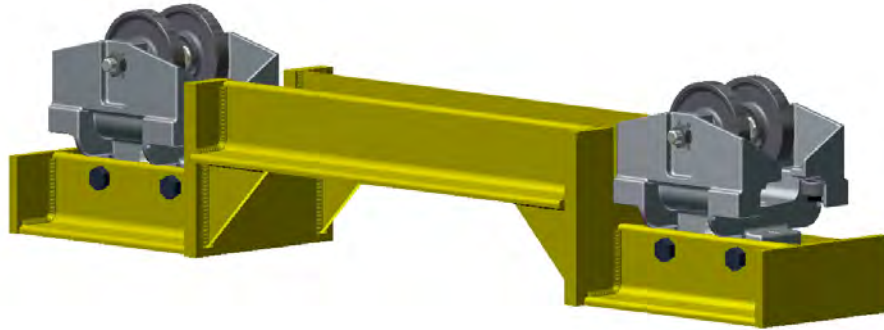
UNIFIED INDUSTRIES, INC.

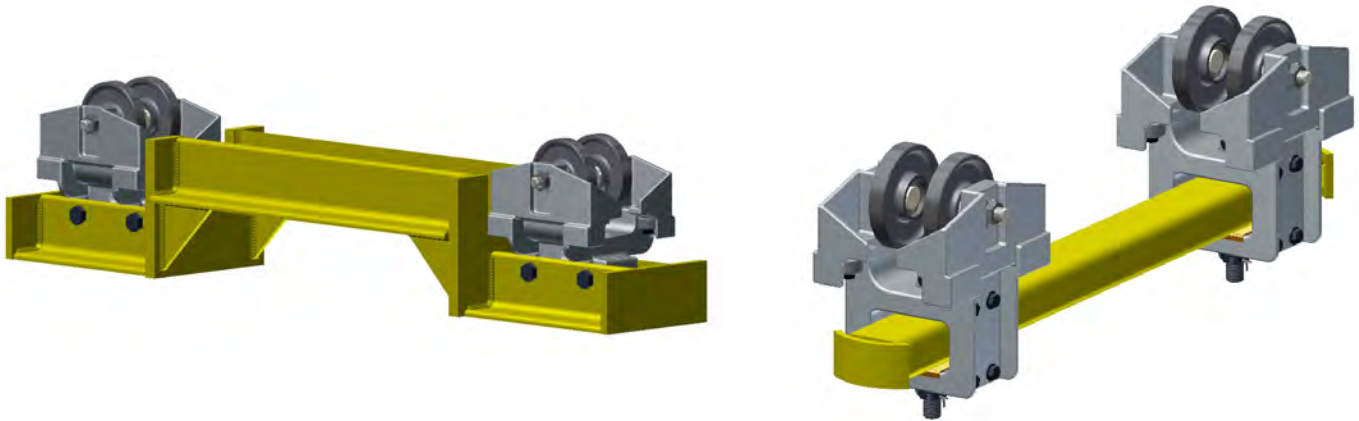
Howell, Michigan

Phone: 517-546-3220

Email: sales@unified-ind.com

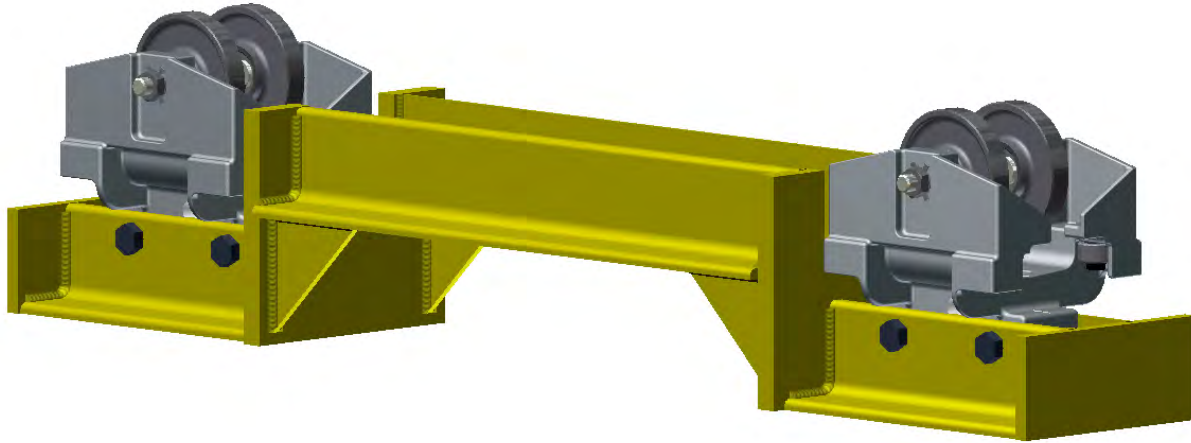
ACCESSORIES & SPECIALIZED CUSTOM PRODUCTS





Accessory Products

- Low headroom end trucks
- Customized load bars
- Universal swivel assembly
- Counter thrust roller assembly
- Insulated load link
- Dual hanging straps
- End stops
- Load links



Model Number

- Series MBC-500 See page 3
- Series MBC-1000 See page 4
- Series MBC-1500 See page 5
- Series MBC-2500 See page 6

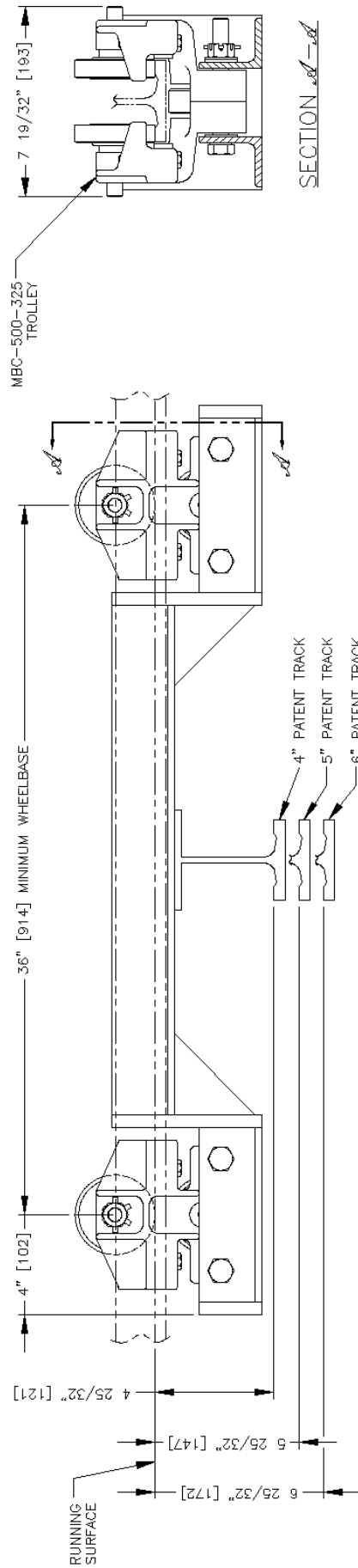
Application

- Unified low headroom end trucks are designed for use on bridge cranes that operate in an area of low headroom conditions.
- Or used as individual load bars to your specifications

Features

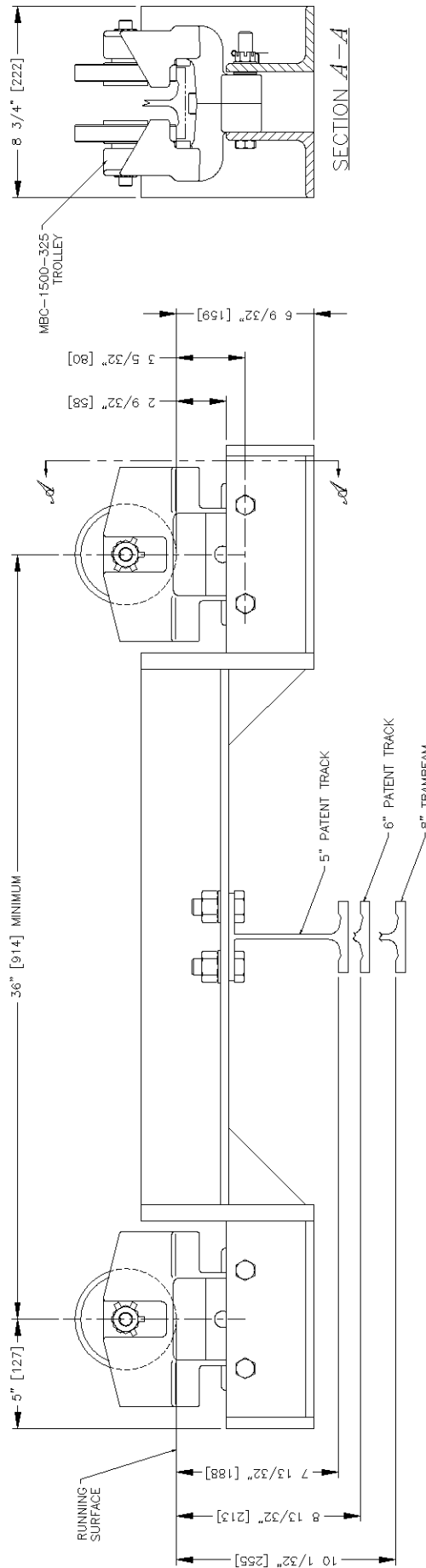
Unified low headroom end trucks are available with three trolley or carrier head adaptations.

- Series BT for bridge cranes with no overhang
- Series MBC-1000 with no kickup wheel for bridge cranes with no overhang or used in conjunction with MBC-1000 with kickup wheel end truck
- Series MBC-1000 for bridge cranes with overhang that requires an end truck with kickup wheels



- OPTIONAL TROLLEYS:**
- (1) MBC-500-4-266 W/O K.U.
 - (2) MBC-500-325 W/O K.U.
 - (3) MBC-500-333 W/O K.U.
 - (4) MBC-500-4-266
 - (5) MBC-500-325
 - (6) MBC-500-333

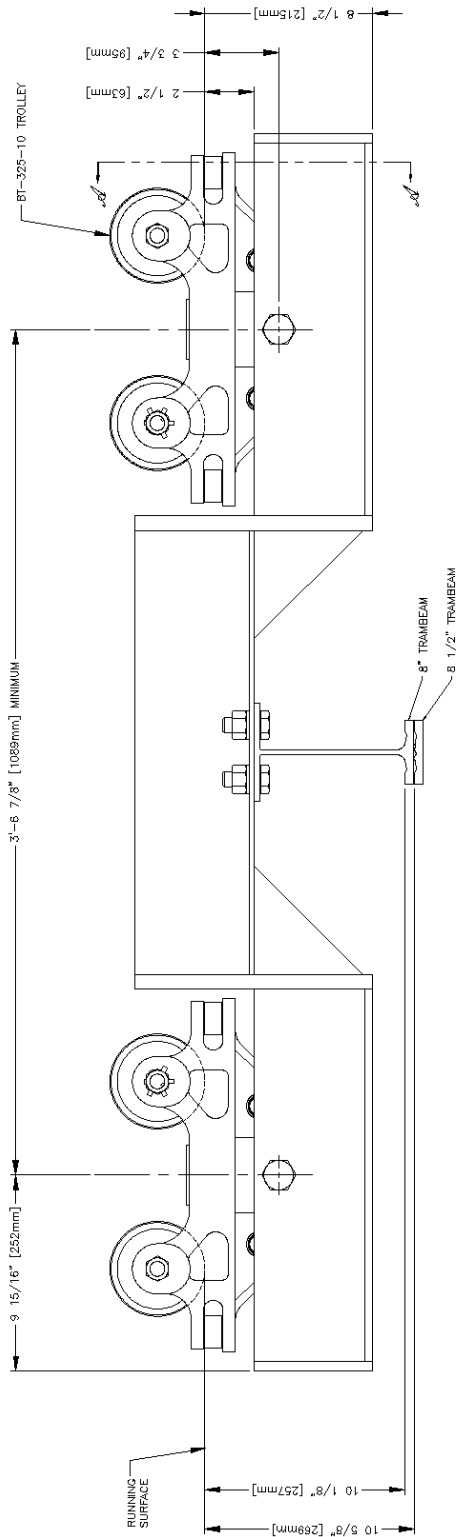
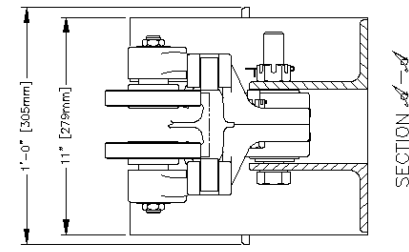
LIGHT LOAD LOW HEADROOM END TRUCK
5" MINIMUM BRIDGE OVERHANG



OPTIONAL TROLLEYS:

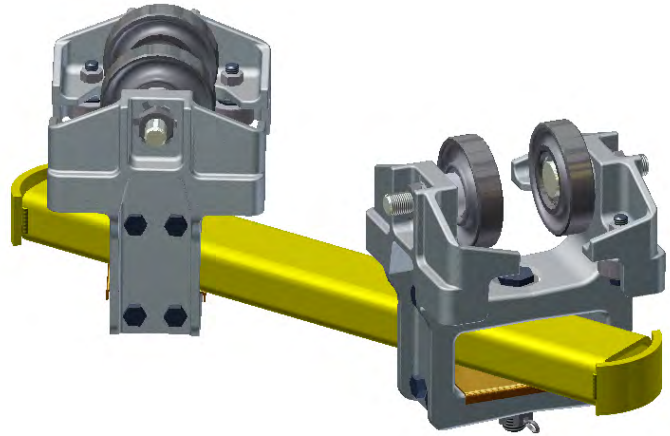
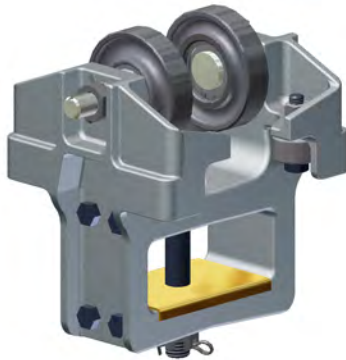
- (1) MBC-1500-325 W/O KICKUP
- (2) MBC-1500-333 W/O KICKUP
- (3) MBC-1500-333

MEDIUM LOAD LOW HEADROOM END TRUCK
6" MINIMUM BRIDGE OVERHANG



OPTIONAL TROLLEY: BT-333-10

HEAVY LOAD LOW HEADROOM END TRUCK
7" MINIMUM BRIDGE OVERHANG



Model Number

- AC-500-2 for operation on 3.25" or 3.33" flange flat rail or 3.33" flange 6" S-beam (12.5 lb.)
- AC-500-2-4 for operation on 2.66 flange 4" S-Beam (7.7 lb.)

Application

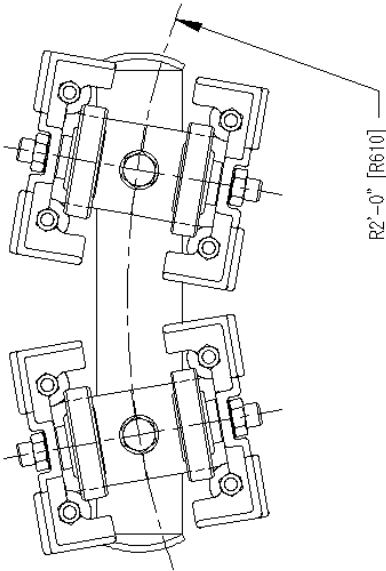
- Used in tandem as articulating load bars on horizontal curved monorail systems

Features

- High tensile almag alloy frames
- Integral built-in safety lugs
- Shielded side thrust roller protection
- Hardened ball bearing side thrust rollers
- Forged wheels 3.2" diameter flat or contoured induction hardened with permanently sealed precision ball bearings
- Load bearing brass wear plate
- Heat-treated steel pivot bolt

Options

- Standard conveyor wheels 3.2" diameter flat or contoured with lubricated ball bearings
- Can be furnished as an assembled end truck or load bar

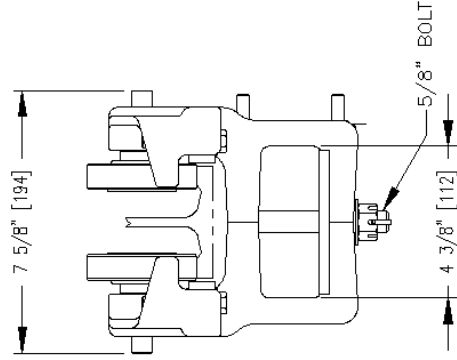
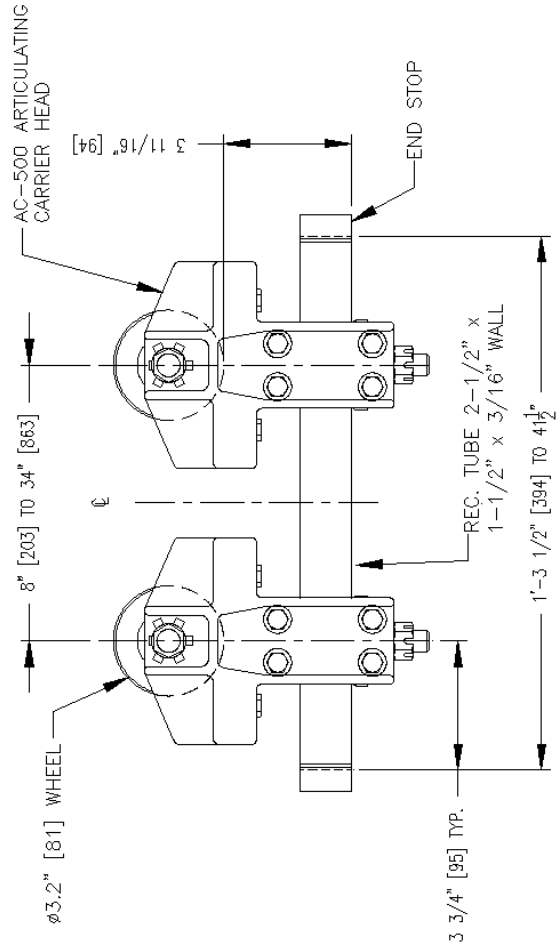


LOAD BAR SPECIFICATIONS:

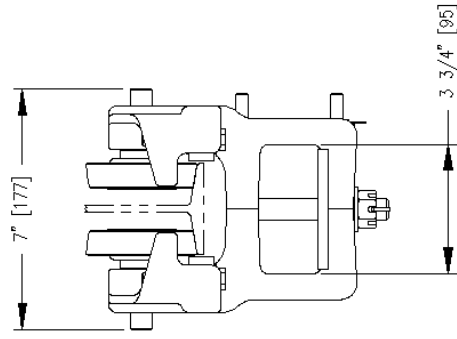
RATED LOAD: 1000 LBS (448Kgs)
 WEIGHT: 29.5 LBS (13.2Kgs)
 BODY: HIGH TENSILE ALMAG
 WHEELS: 3.2" [81.3] DIA.
 STUD: 5/8" [15] DIA.
 THRUST ROLLERS: BALL THRUST BEARINGS

NOTES:

WHEN ORDERING PLEASE SPECIFY EXACT WIDTH OF RUNNING SURFACE FLANGE.
 (1) 3.25" [82.6] FOR STANDARD FLAT RAIL.
 (2) 2.66" [67.6] FOR S4 BEAM.
 (3) 3.33" [84.6] FOR S6 BEAM



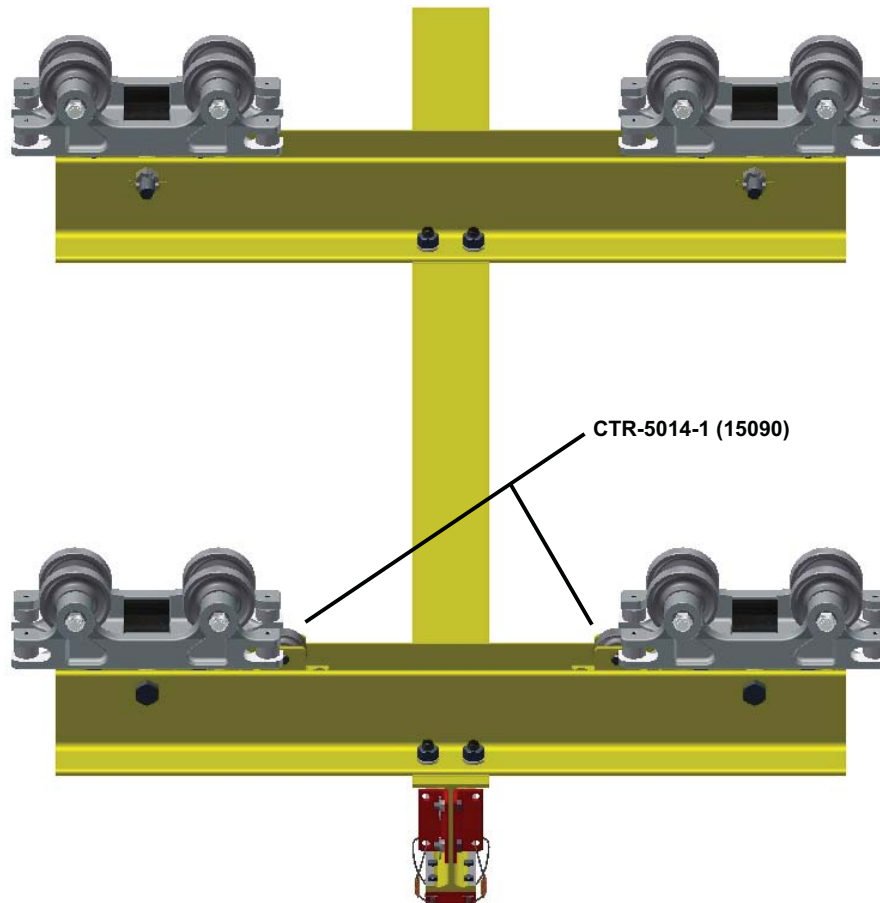
3.25" FLAT RAIL



S4 BEAM



Counter Thrust Roller Assembly



Model Number

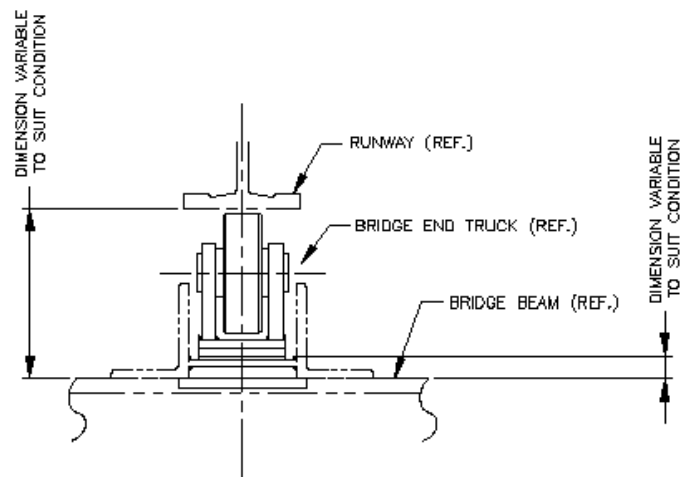
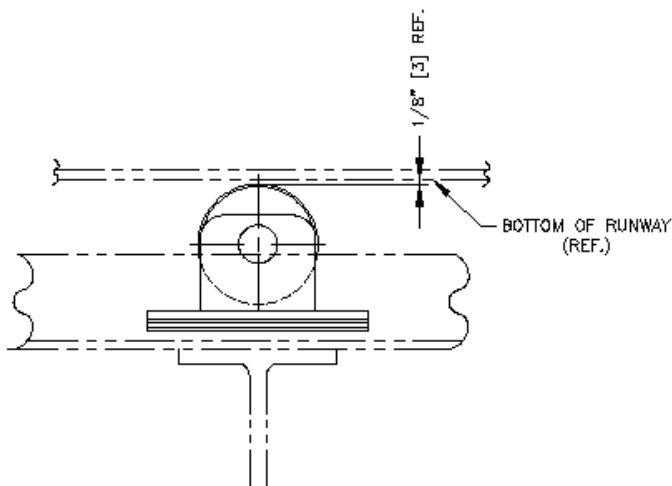
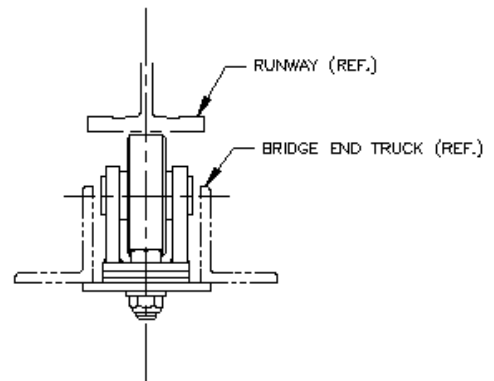
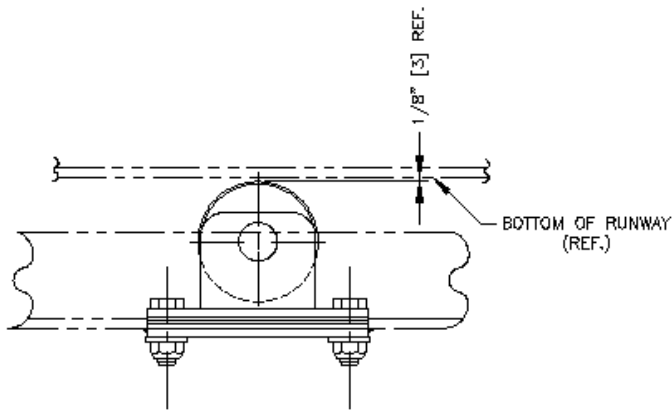
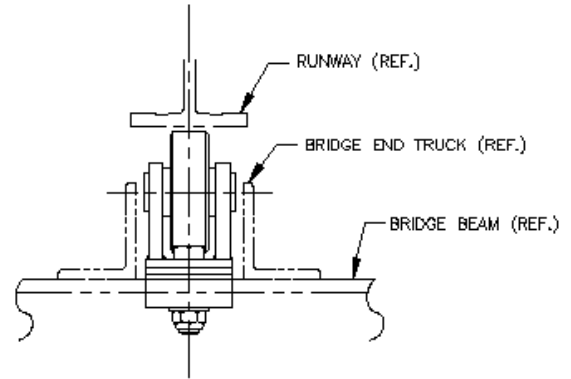
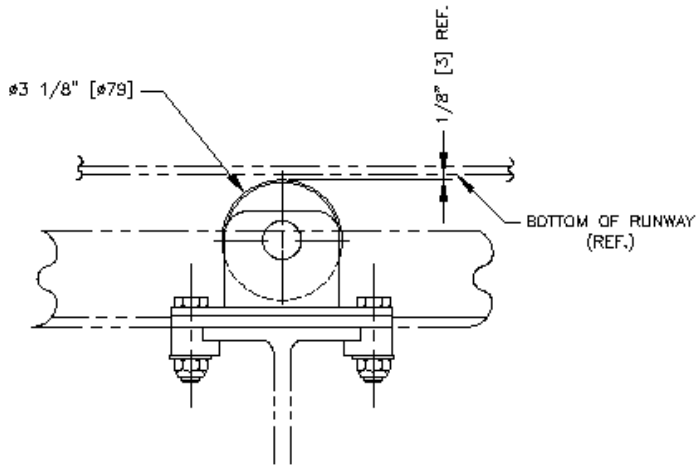
- CTR-5014-1 (15090)

Application

- Used singly or in pairs on bridge crane end trucks where wheel engages bottom surface of runway rail to absorb "kick-up" action when load is moved to extreme end of an overhang bridge beam

Features

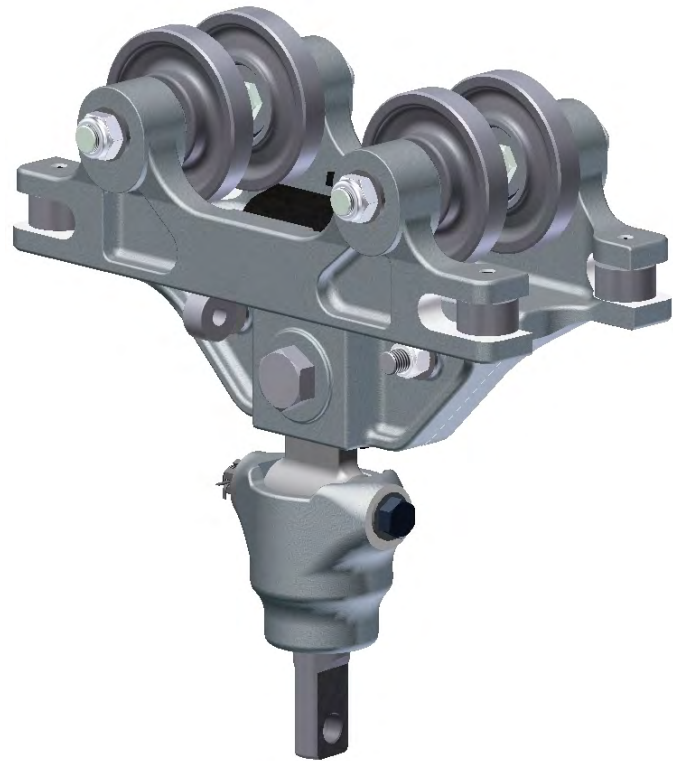
- Large 3 1/8" dia. wheel
- Adjustable height for runway rail clearance
- 1,500 lb. Capacity



COUNTER THRUST ROLLER ASSEMBLY #CTR-5014-1
LARGE 3 1/8" DIA. WHEEL



Universal Swivel Assemblies



Model Number

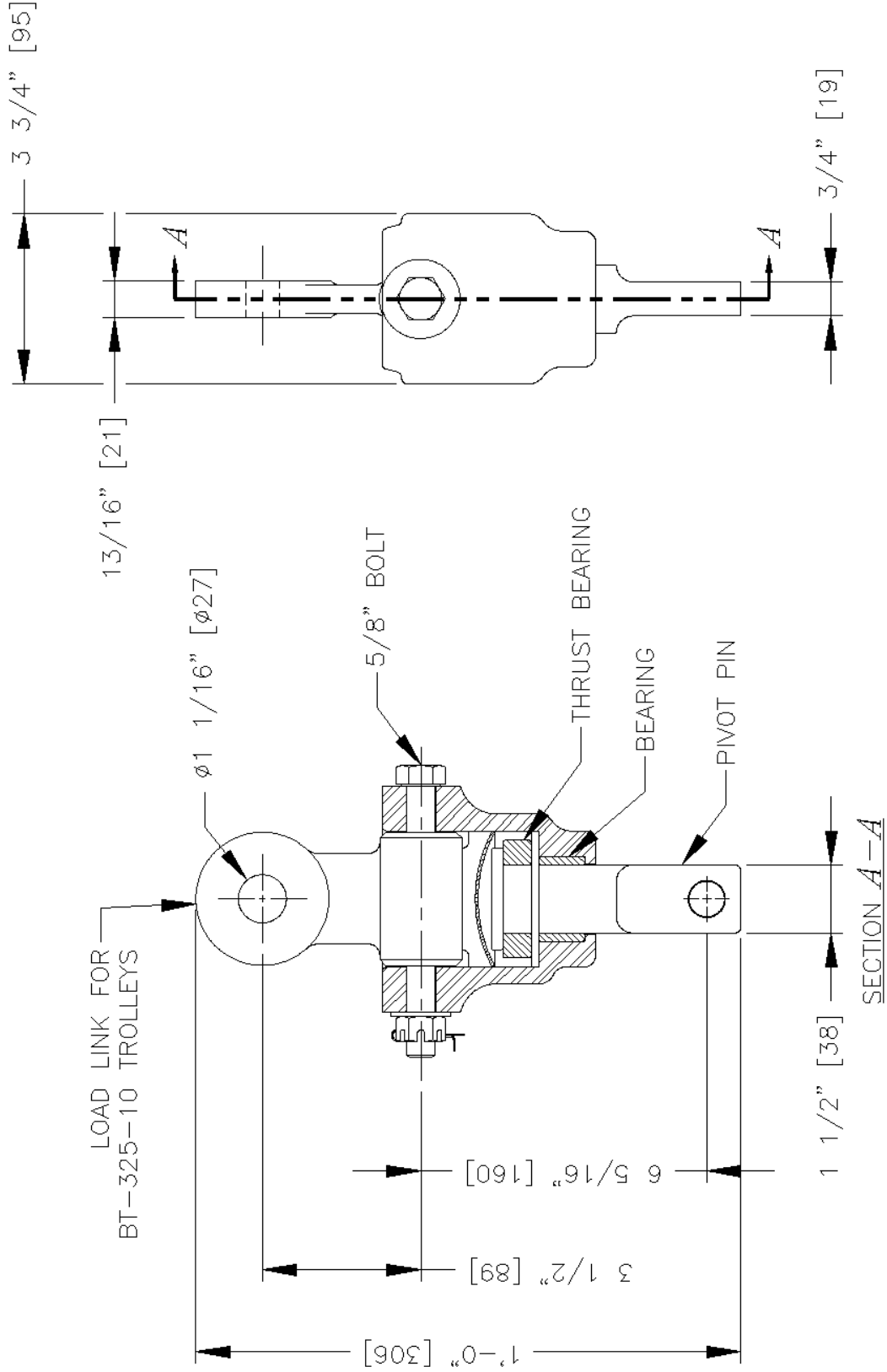
- S-300-1 For use on **Unified** trolley BT-325-10 and BT-333-10

Application

- Unified universal swivel assemblies are specifically designed for the suspension of transformer stations not exceeding 2000 pounds
- Also used for the suspension of portable tools, hoists and fixtures

Features

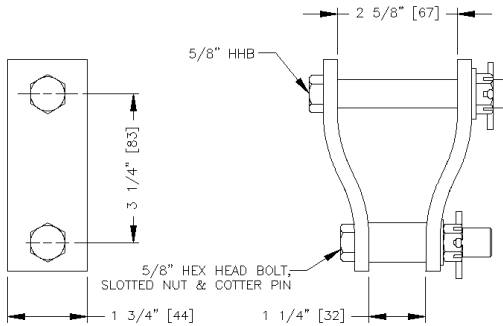
- Rotating shaft on universal swivel designed to fit standard transformer clevis
- Universal swivel permits suspended load to move in all three planes



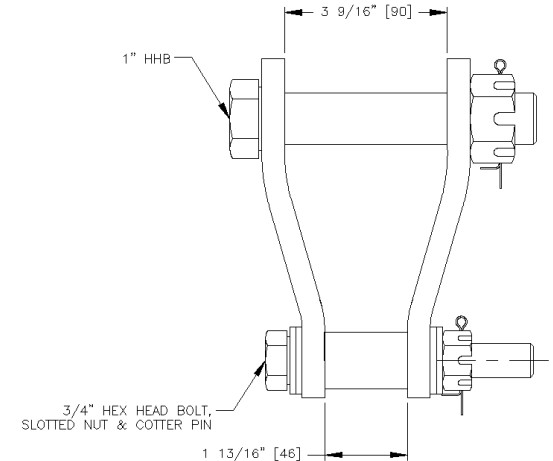
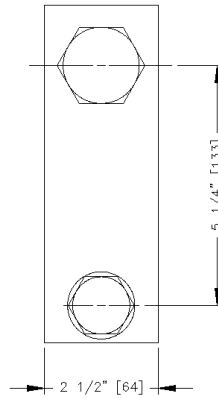
S-300-1 (15250)



Dual Hanging Straps



DHS_5011-1 (15100)
FOR USE ON UNIFIED TROLLEYS
BT-325, BT-266, AND BT-333



DHS_5012-1 (15110)
FOR USE ON UNIFIED TROLLEYS
BT-325-10 & BT-333-10

DHS-5011-1 (15100)



DHS-5012-1 (15110)



Model Number

- DHS-5011-1 for use with **Unified** trolleys BT-325, BT-266 and BT-333
- DHS-5012-1 for use with **Unified** trolleys BT-325-10, BT-333-10

Application

- For suspension of balancers, hoists, portable tools, power tools, fixtures etc.

Features

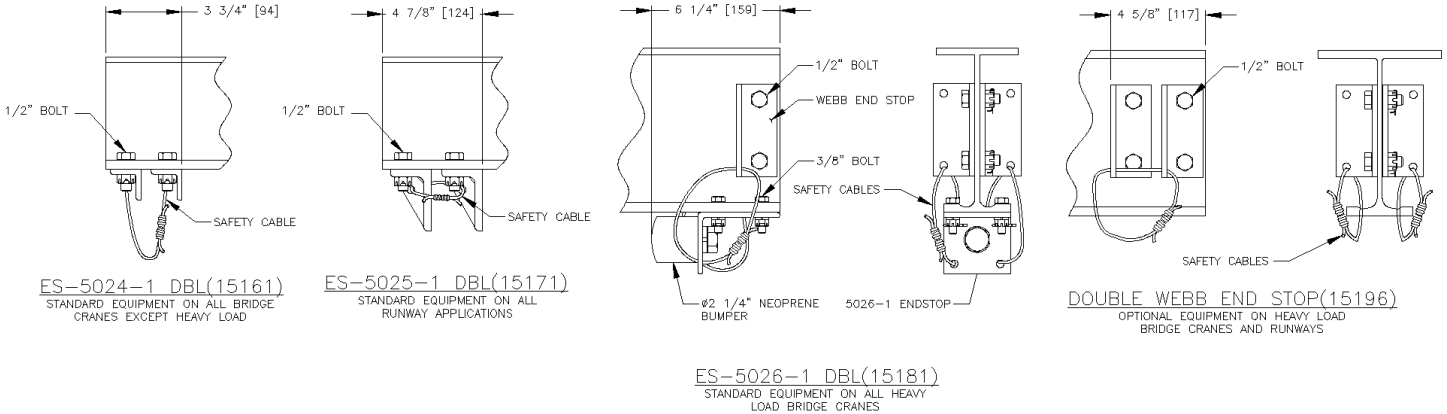
- Forged steel eyebolt or eyebolt and eyenut

Options

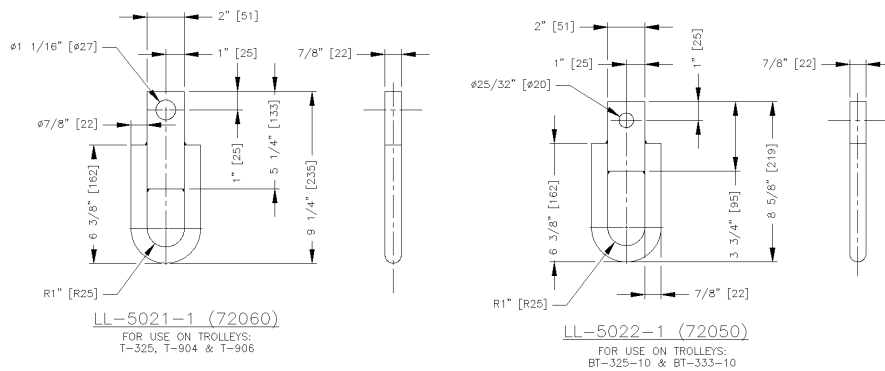
- Available with or without forged eyebolt and eyenut or with standard hex head bolt



End Stops



Load Links



Model Number

Unified standard redundant end stop

- **15161** ES-5024-1
- Furnished as standard equipment on all **Unified** bridge cranes except heavy load bridge crane

Unified standard redundant end stop

- **15171** ES-5025-1
- Attached with two 1/2" steel bolts
- Will take the impact of the carrier on the end truck or load bar rather than on the load wheel

Unified standard redundant end stop

- **15181** ES-5026-1
- Furnished as standard equipment on all **Unified** heavy load bridge cranes
- Optional on other bridge cranes
- **15196** Double Webb End Stop
- Optional on heavy load bridge cranes and runways

Model Number

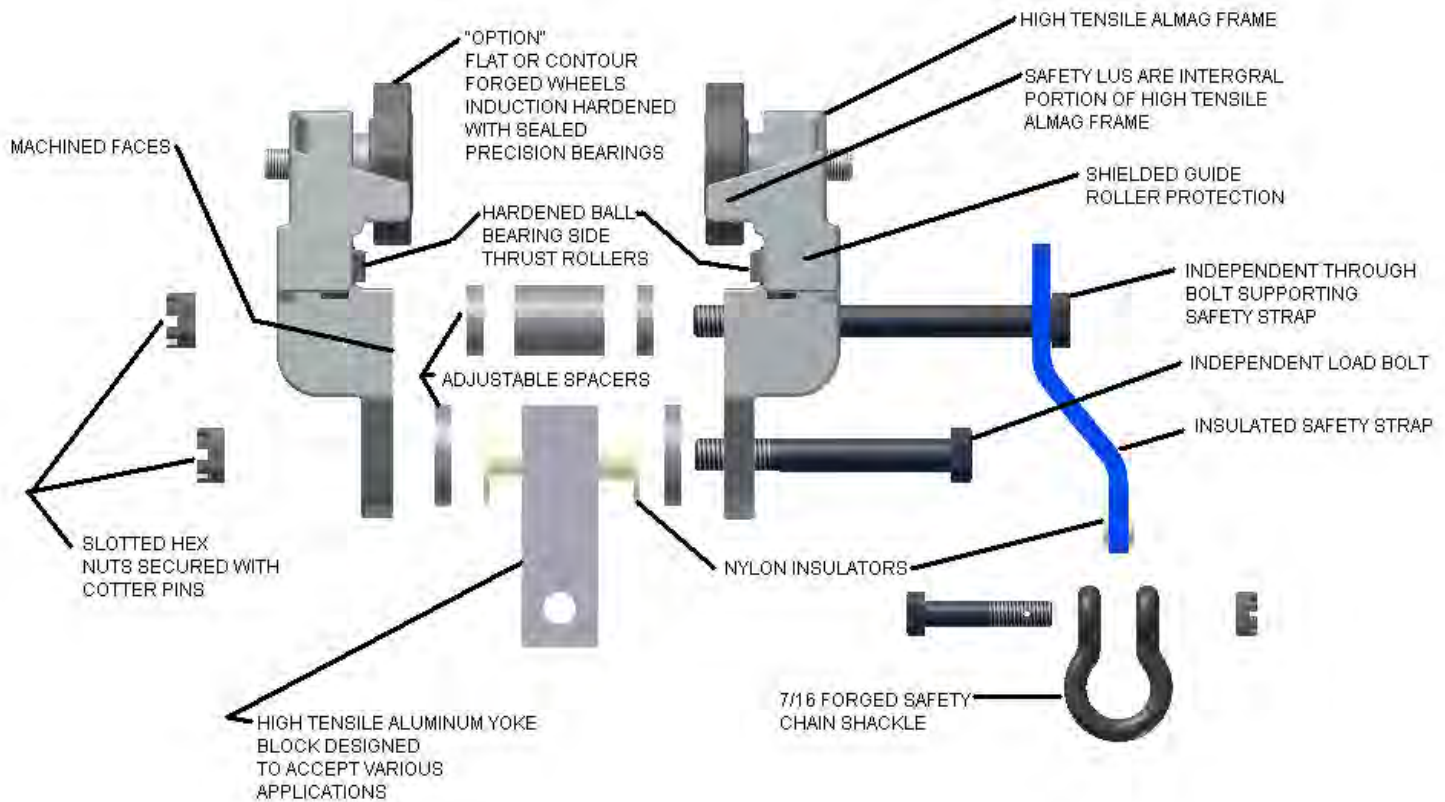
- LL-5022-1 for use on **Unified** trolleys **BT-325-10** & **BT-333-10**

Application

Used to suspend a variety of loads such as balancers, hoists, hooks, fixtures etc.

Unified Universal Insulated Trolley Assembly (Series UT-1000)

PAGE 14



CAUTION

This bridge crane has a safe load rating, which has been clearly marked on both sides by the manufacturer. The total weight of the suspended load should never exceed 125% of this limit. The weight of all handling devices such as buckets, magnets, grabs, balancers, hoists, weldguns, etc. must be included as a part of the suspended load. The weight of such devices should therefore be determined and clearly marked.

Consideration should be given when installing hoisting devices. Load ratings for such devices may exceed the load rating of the bridge crane.

The operator should inspect this bridge crane for loose bolts and worn, cracked or distorted parts prior to use (inspection should include all handling devices and mounting equipment). Defective parts should be replaced with manufacturer-approved parts before use of bridge crane is resumed.

This bridge crane conforms to the safety standards of the U.S. Occupational Safety and Health Administration (OSHA). Any alteration of its structure or change in its rated load capacity may render null and void any manufacturer's warranties, expressed or implied.

***All dimensions are reference only
and need to be verified with factory.**



UNIFIED INDUSTRIES IS PROUD TO PROVIDE OUR UNIFIED CUSTOM PATENT RAIL SECTIONS

Unified Custom Patent Rail Sections are available up to 20'-0" in length and three (3) different sizes: 4", 5" & 6" (see page 16 for cross-section).

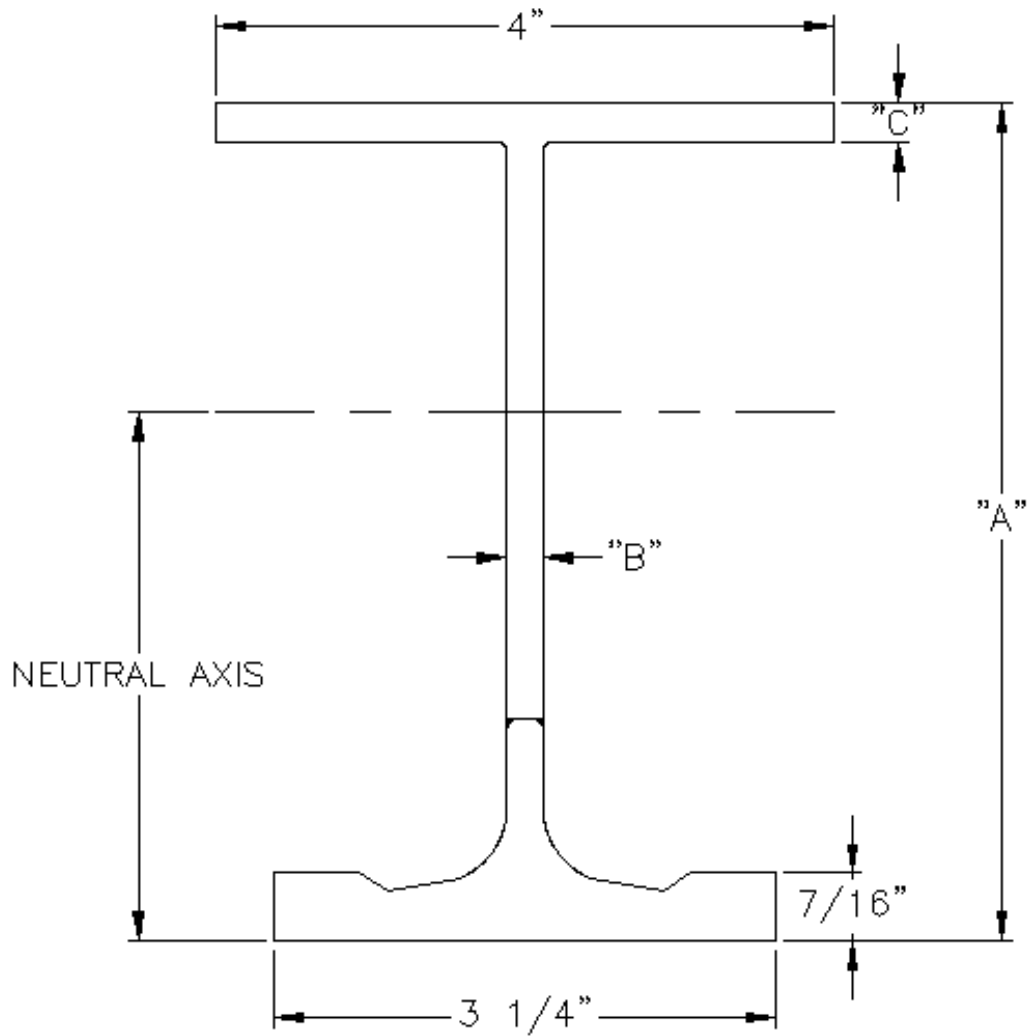
Unified Custom Patent Rails are compatible with our Unified Patent Rail Trolleys as shown in the "Standard Shapes Trolleys" Section of this catalog.

Unified Custom Patent Rails can be utilized in special circumstances such as: custom-built bridges and runways as illustrated in the "Manual Bridge Cranes" Section of this catalog.

Should you require further information concerning the "Unified Custom Patent Rail" Section or any other Unified Product, please consult the factory.

Unified Industries is also pleased to provide "Trambeam" patented rail sections in both light and heavy rail.

Note: Unified stocks all light rail sections and has to order all Heavy rail sections. (see pages 17 & 18 for cross sections)

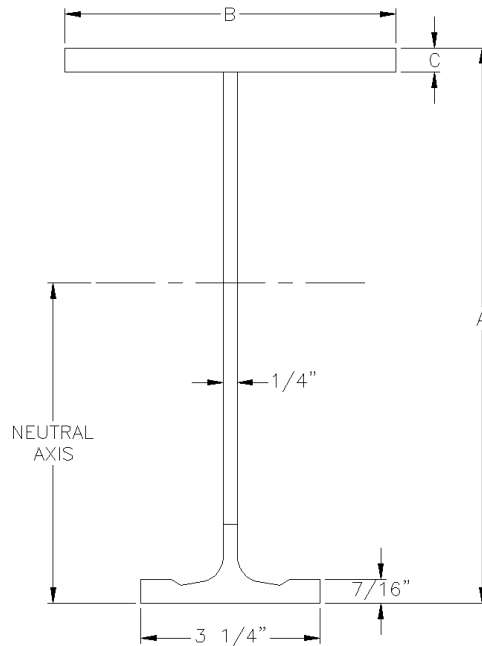


"A"	"B"	"C"
4 7/16"	15/64"	9/32"
5 7/16"	15/64"	1/4"
6 7/16"	15/64"	1/4"

Light Rail Sections

Nos. 34011 through 34031 light rail sections are used for runway and monorail tracks and bridge girders. Dimensions and section properties are shown in the tables.

Nos. 34011 and 34016 tracks are manufactured in stock lengths of 41 feet. All other light rail tracks are manufactured in stock lengths of 41, 50 and 60 feet. They are cut to length and fabricated in any length up to the maximum stock length.



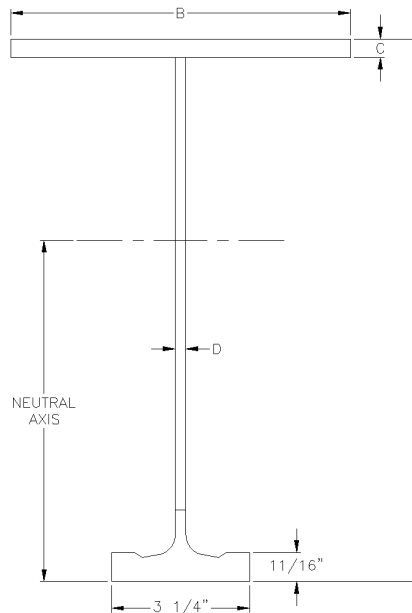
Item Number	Norminal Size and Weight	A	B	C
34011	8 @ 16.5	8-1/16	5	5/16
34016	8-1/2 @ 19.4	8-9/16	5	7/16
34021	10 @ 22.2	10-1/16	6	7/16
34026	11-1/2 @ 26.3	11-9/16	7	1/2
34031	13 @ 29.3	13-1/16	8	1/2

Item Number	Maximum Wheel Dia.(In)	Area (In. x 2)	Section Modulus (In. x 3)		Moment of Interia(In. x 4)	Neutral Axis (In.)
			Tension	Compression		
34011	5	4.672	12.920	11.585	54.399	3.812
34016		5.703	14.857	18.254	70.133	4.720
34021		6.515	18.799	25.656	109.171	5.807
34026		7.750	23.298	37.568	166.270	7.137
34031		8.625	27.924	48.310	231.148	8.278

Heavy Rail Sections

No. 34037 Nos. 34041 through 34066 heavy rail sections are used for runway and monorail tracks and bridge girders. No. 34038 sections are used for monorail curves. Dimensions and section properties are shown in the tables.

Nos. 34037 and Nos. 34041 through 34056 tracks are manufactured in stock lengths of 41, 50 and 60 feet. Nos. 34061 and 34066 tracks are manufactured to order. They are cut to length and fabricated in any length up to the maximum.



Item Number	Norminal Size and Weight	A	B	C	D
34037	12-1/2 @ 33.6	12-9/16	8	1/2	5/16
*34038	12-1/2 @ 30.2	12-9/16	6	1/2	5/16
34041	14 @ 38.5	14-1/16	8	5/8	5/16
34046	16 @ 42.7	16-1/16	9	5/8	5/16
34051	18 @ 50.3	18-1/16	10	5/8	3/8
34056	20 @ 55.0	20-1/16	11	5/8	3/8
34061	22-1/2 @ 61.4	22-9/16	12-1/2	5/8	3/8
34066	25 @ 67.8	25-1/16	14	5/8	3/8

Item Number	Maximum Wheel Dia.(In)	Area (In. x 2)	Section Modulus (In. x 3)		Moment of Inertia(In. x 4)	Neutral Axis (In.)
			Tension	Compression		
34037	8	9.888	34.440	48.781	253.605	7.364
*34038		8.888	33.251	39.324	226.337	6.807
34041		11.318	40.939	65.239	353.731	8.460
34046		12.568	49.889	84.012	502.776	10.078
34051		14.802	62.307	106.516	710.066	11.396
34056		16.177	73.512	130.069	942.276	12.818
34061		18.052	88.875	165.152	1303.680	14.669
34066		19.927	105.539	204.237	1743.910	16.524